

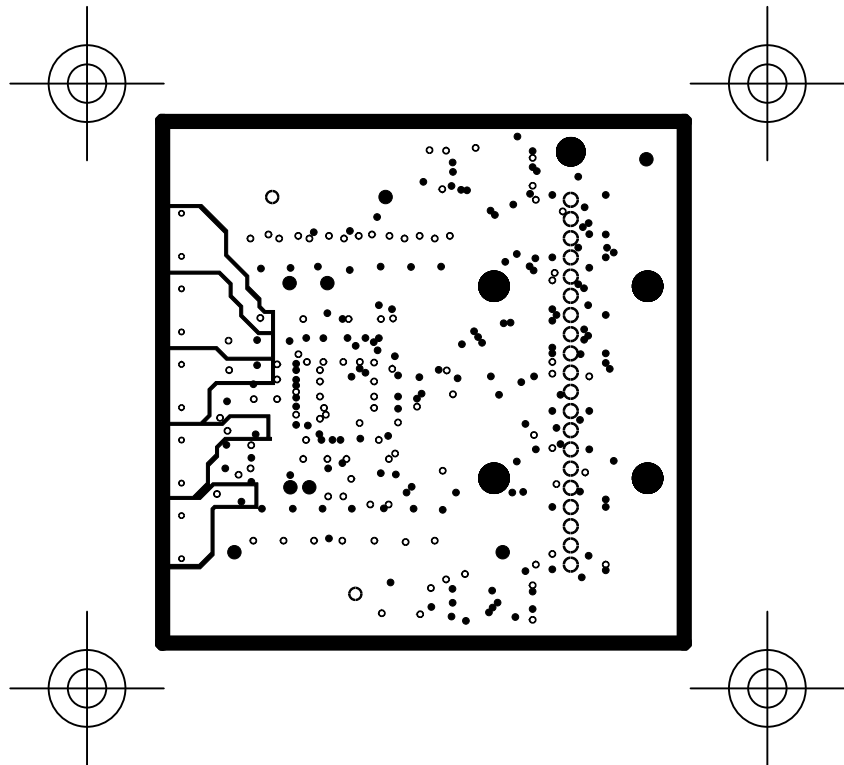
PSEC3 QFP Mezzanine Card

SCHEMATIC DRAWING: 2725 Rev.A  
SPECIFICATION DRAWING: 2726 Rev.A  
ASSEMBLY DRAWING: 2727 Rev.A

Feb. 22, 2011

The University of Chicago  
Enrico Fermi Institute  
Electronics Development Group

Film1 - SIGNAL\_1, Top



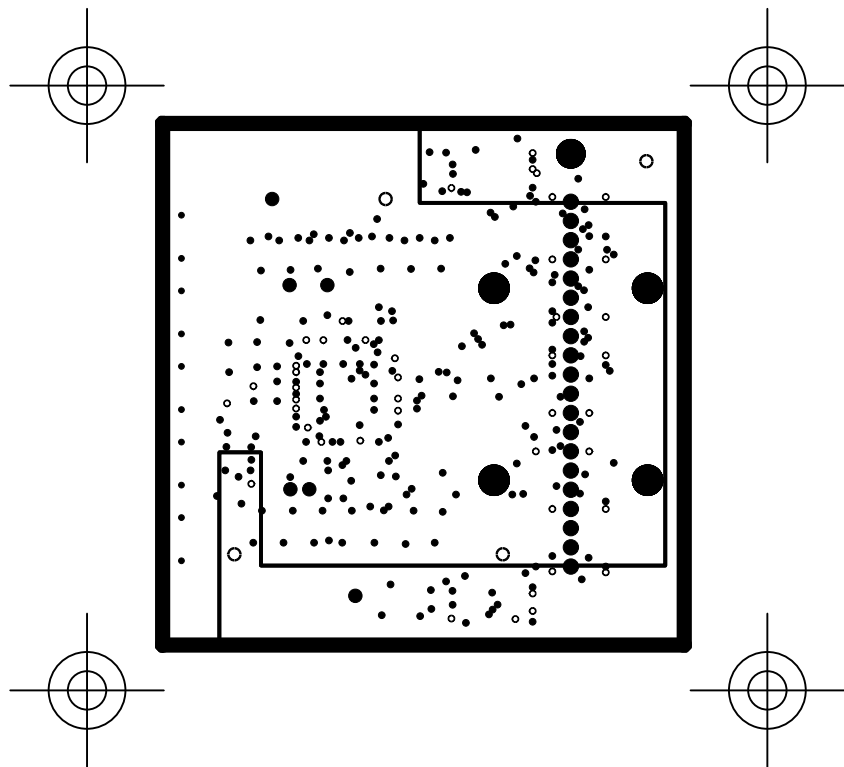
PSEC3 QFP Mezzanine Card

SCHEMATIC DRAWING: 2725 Rev.A  
SPECIFICATION DRAWING: 2726 Rev.A  
ASSEMBLY DRAWING: 2727 Rev.A

Feb. 22, 2011

The University of Chicago  
Enrico Fermi Institute  
Electronics Development Group

Film2 - GROUND



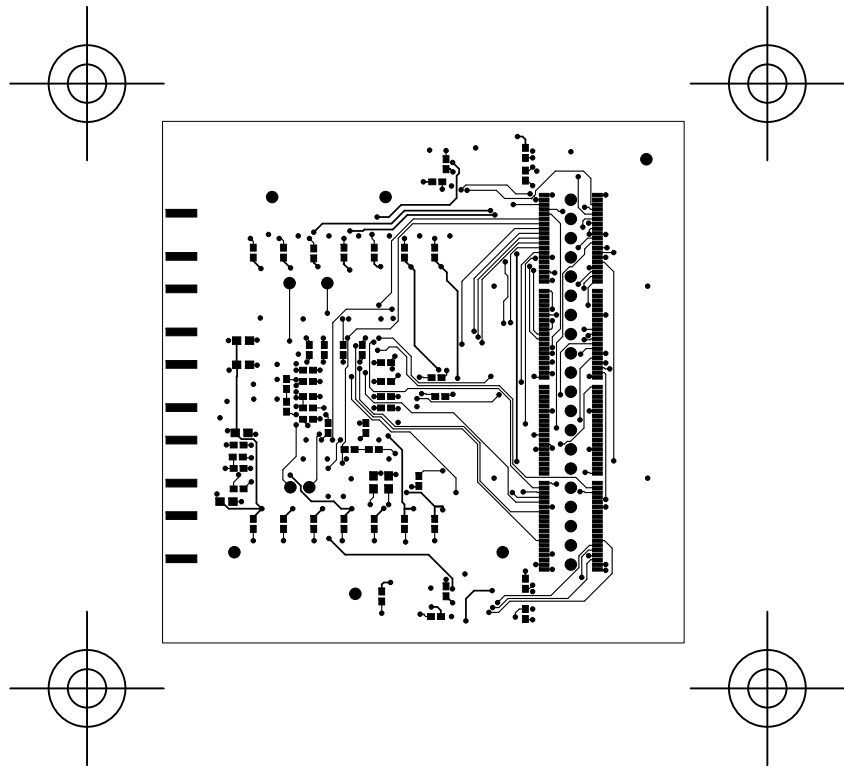
PSEC3 QFP Mezzanine Card

SCHEMATIC DRAWING: 2725 Rev.A  
SPECIFICATION DRAWING: 2726 Rev.A  
ASSEMBLY DRAWING: 2727 Rev.A

Feb. 22, 2011

The University of Chicago  
Enrico Fermi Institute  
Electronics Development Group

Film3 - POWER\_1: +1.2Va, +3.0V



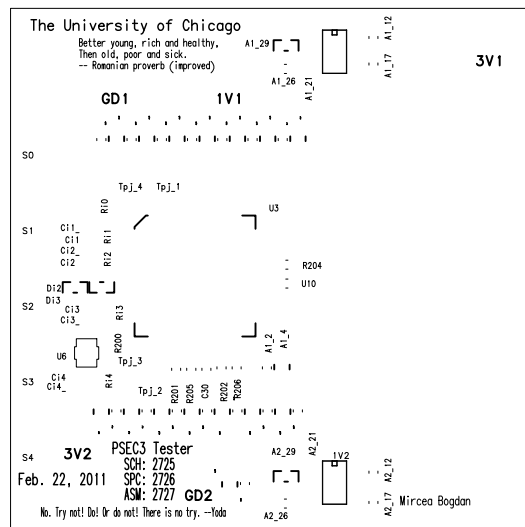
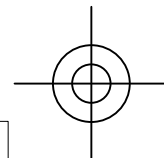
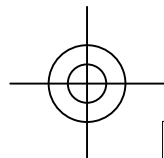
PSEC3 QFP Mezzanine Card

SCHEMATIC DRAWING: 2725 Rev.A  
SPECIFICATION DRAWING: 2726 Rev.A  
ASSEMBLY DRAWING: 2727 Rev.A

Feb. 22, 2011

The University of Chicago  
Enrico Fermi Institute  
Electronics Development Group

Film6 - SIGNAL\_4, Bottom



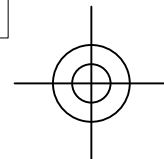
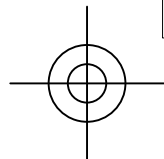
PSEC3 QFP Mezzanine Card

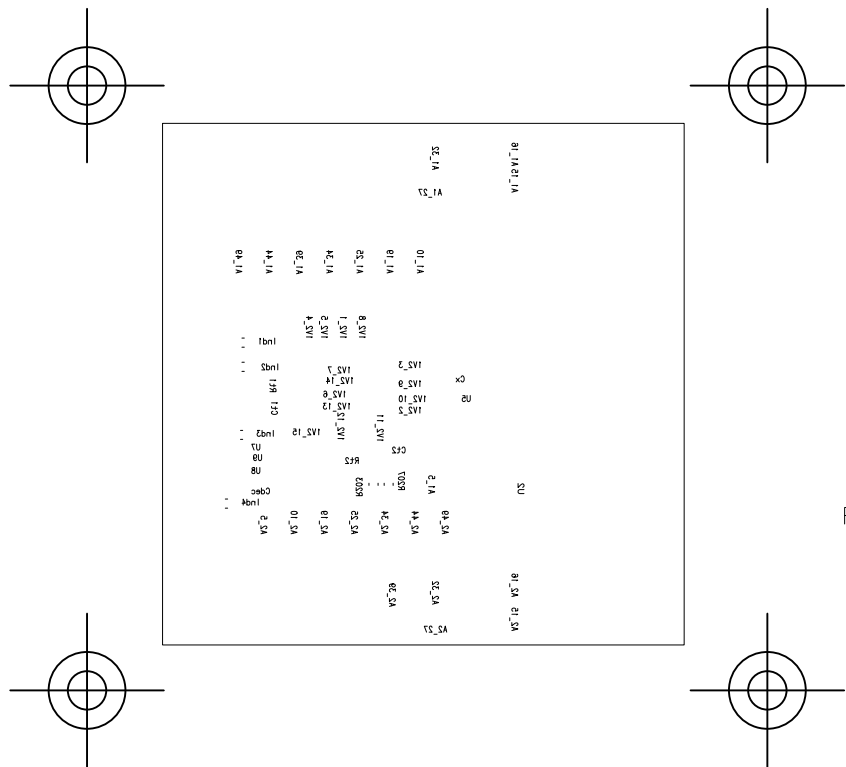
SCHEMATIC DRAWING: 2725 Rev.A  
SPECIFICATION DRAWING: 2726 Rev.A  
ASSEMBLY DRAWING: 2727 Rev.A

Feb. 22, 2011

The University of Chicago  
Enrico Fermi Institute  
Electronics Development Group

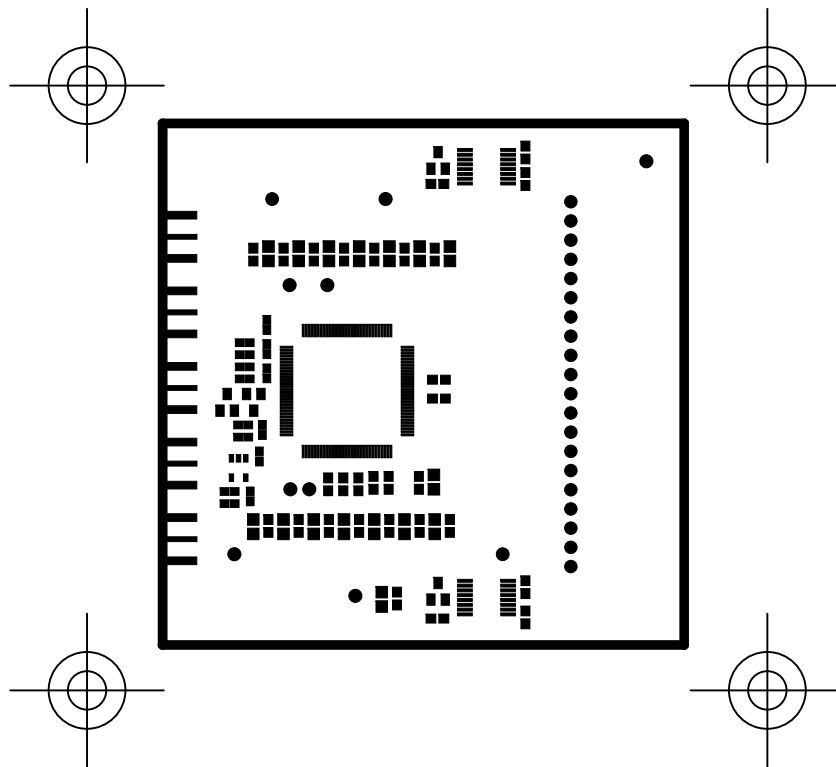
Film7 - Top Silkscreen





PSEC3 QFP Mezzanine Card  
 SCHEMATIC DRAWING: 2725 Rev.A  
 SPECIFICATION DRAWING: 2726 Rev.A  
 ASSEMBLY DRAWING: 2727 Rev.A  
 Feb. 22, 2011  
 The University of Chicago  
 Enrico Fermi Institute  
 Electronics Development Group

Film8 - Bottom Silkscreen



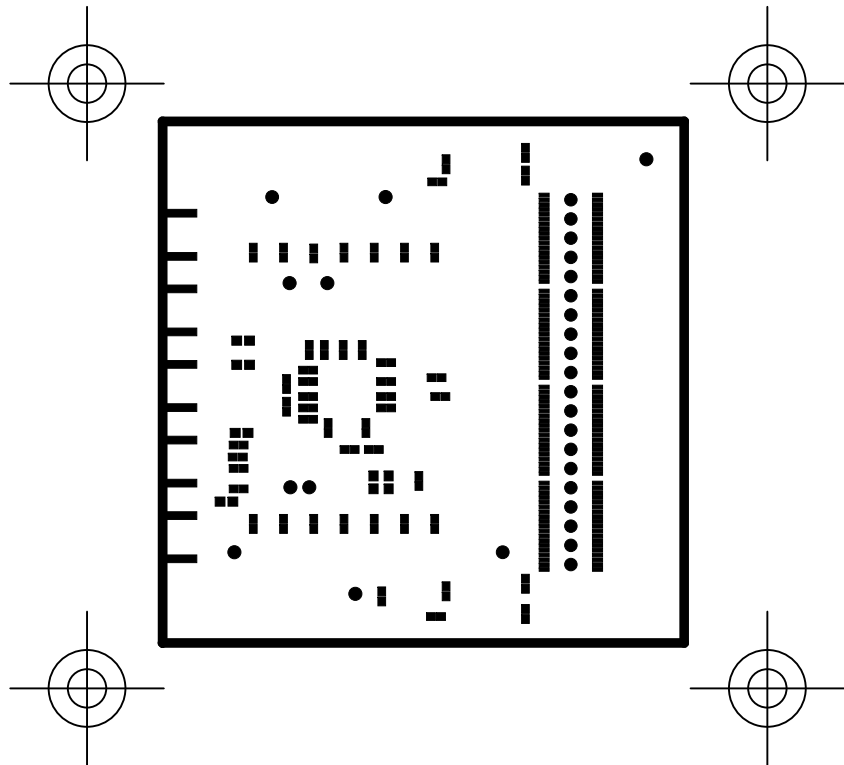
PSEC3 QFP Mezzanine Card

SCHEMATIC DRAWING: 2725 Rev.A  
SPECIFICATION DRAWING: 2726 Rev.A  
ASSEMBLY DRAWING: 2727 Rev.A

Feb. 22, 2011

The University of Chicago  
Enrico Fermi Institute  
Electronics Development Group

Film9 - Top Soldermask



PSEC3 QFP Mezzanine Card

SCHEMATIC DRAWING: 2725 Rev.A  
SPECIFICATION DRAWING: 2726 Rev.A  
ASSEMBLY DRAWING: 2727 Rev.A

Feb. 22, 2011

The University of Chicago  
Enrico Fermi Institute  
Electronics Development Group

Film10 - Bottom Soldermask



