

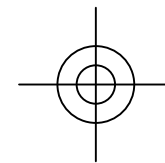
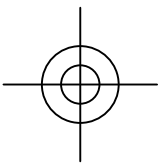
14-BIT ADC Board

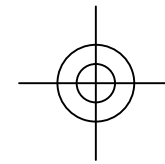
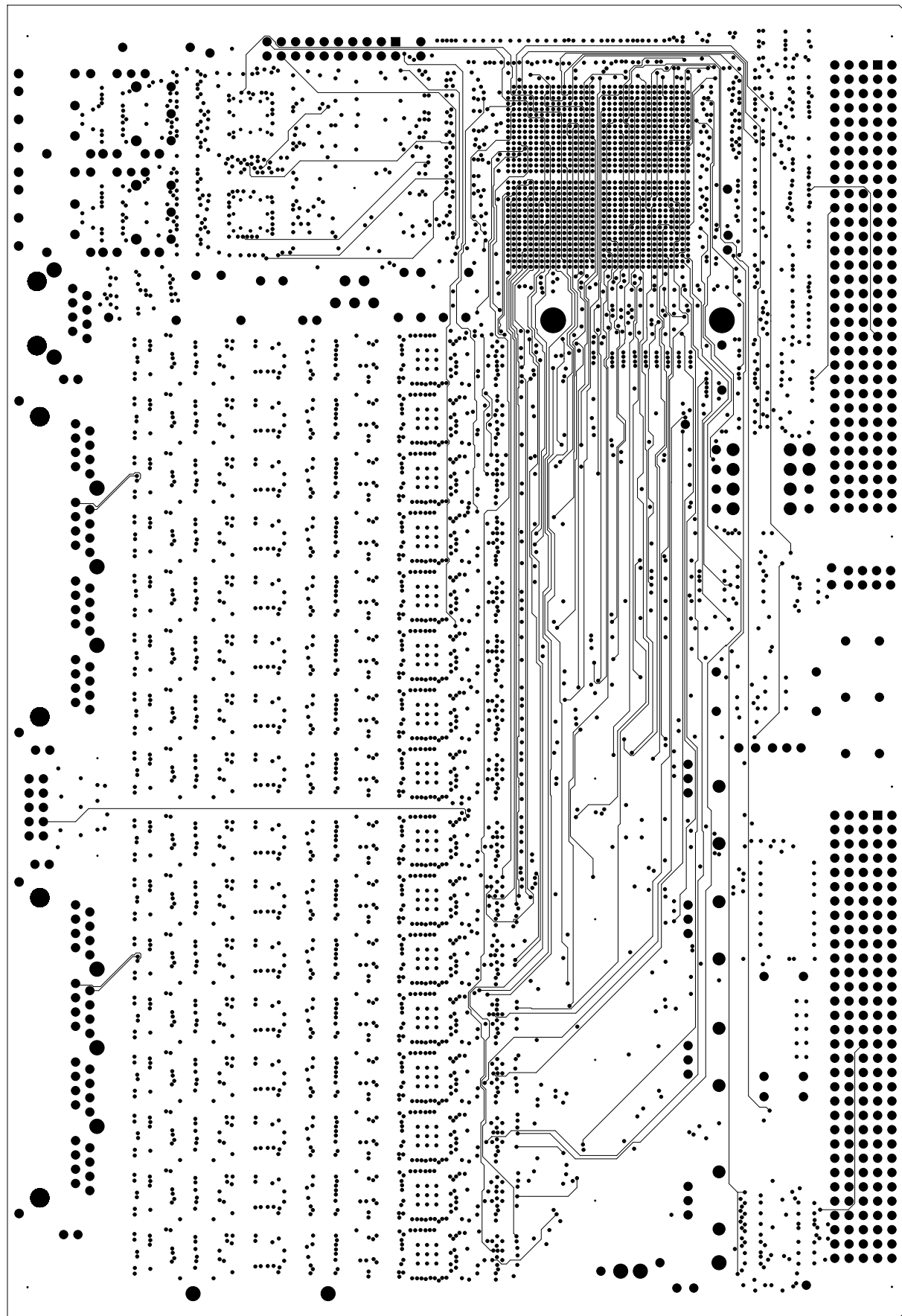
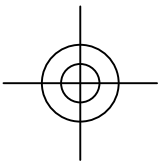
SCHEMATIC DRAWING: B-2605 Rev.D
SPECIFICATION DRAWING: A-2606 Rev.D
ASSEMBLY DRAWING: B-2607 Rev.D

4/27/2017

University of Chicago
Enrico Fermi Institute
Electronics Development Group
Chicago, IL 60637
(773) 702-7801

COMPONENT SIDE SIGNAL_1 FILM1, LAYER_1





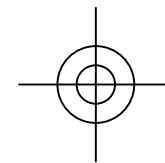
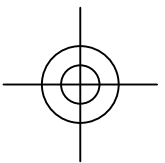
14-BIT ADC Board

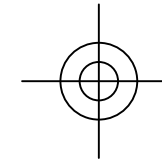
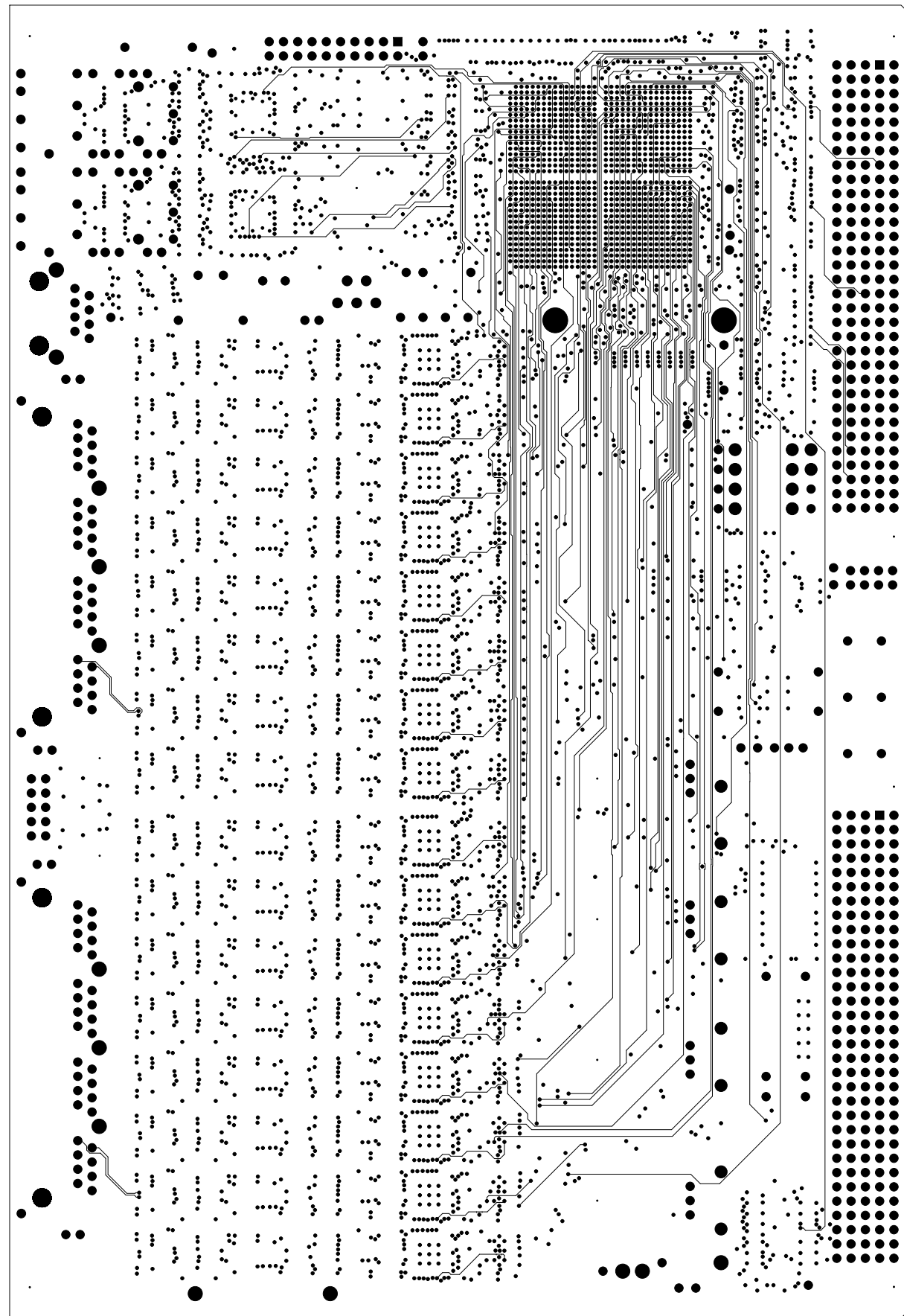
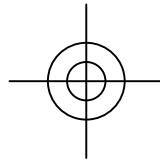
SCHEMATIC DRAWING: B-2605 Rev.D
SPECIFICATION DRAWING: A-2606 Rev.D
ASSEMBLY DRAWING: B-2607 Rev.D

4/27/2017

University of Chicago
Enrico Fermi Institute
Electronics Development Group
Chicago, IL 60637
(773) 702-7801

SIGNAL_9 FILM10, LAYER_10





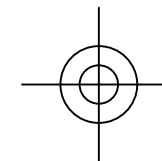
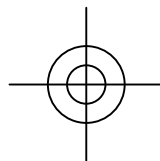
14-BIT ADC Board

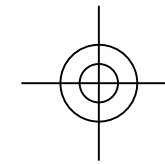
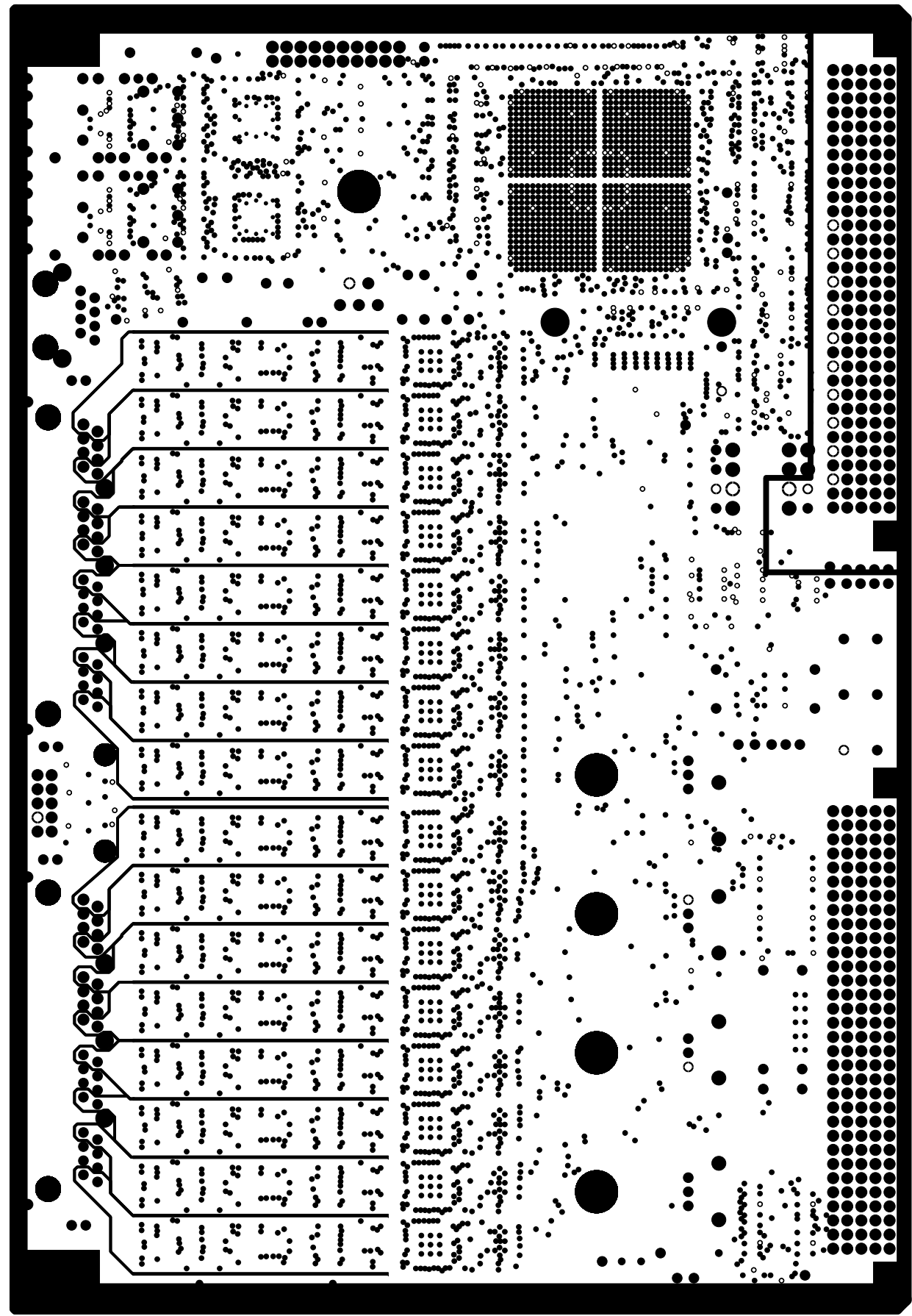
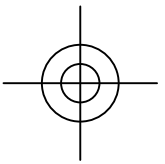
SCHEMATIC DRAWING: B-2605 Rev.D
SPECIFICATION DRAWING: A-2606 Rev.D
ASSEMBLY DRAWING: B-2607 Rev.D

4/27/2017

University of Chicago
Enrico Fermi Institute
Electronics Development Group
Chicago, IL 60637
(773) 702-7801

SIGNAL_4 FILM11, LAYER_11





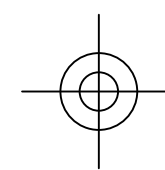
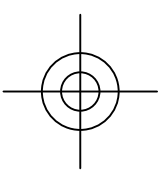
14-BIT ADC Board

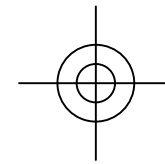
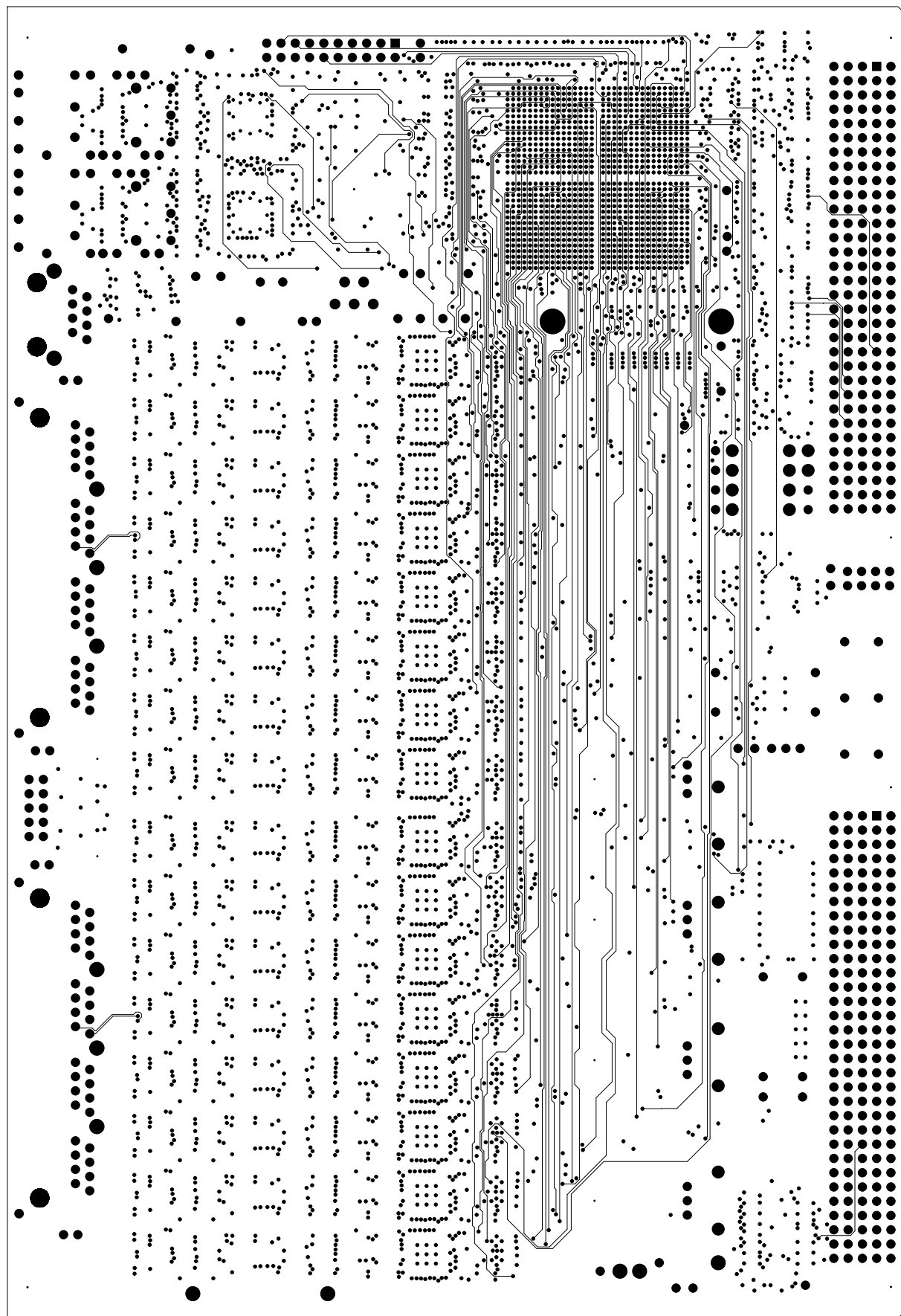
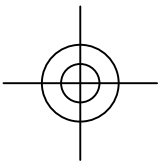
SCHEMATIC DRAWING: B-2605 Rev.D
SPECIFICATION DRAWING: A-2606 Rev.D
ASSEMBLY DRAWING: B-2607 Rev.D

4/27/2017

University of Chicago
Enrico Fermi Institute
Electronics Development Group
Chicago, IL 60637
(773) 702-7801

POWER: +3.3V, +3.3Vin FILM12, LAYER_12





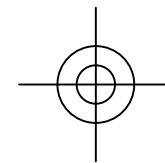
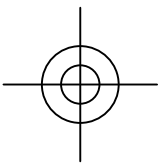
14-BIT ADC Board

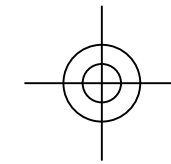
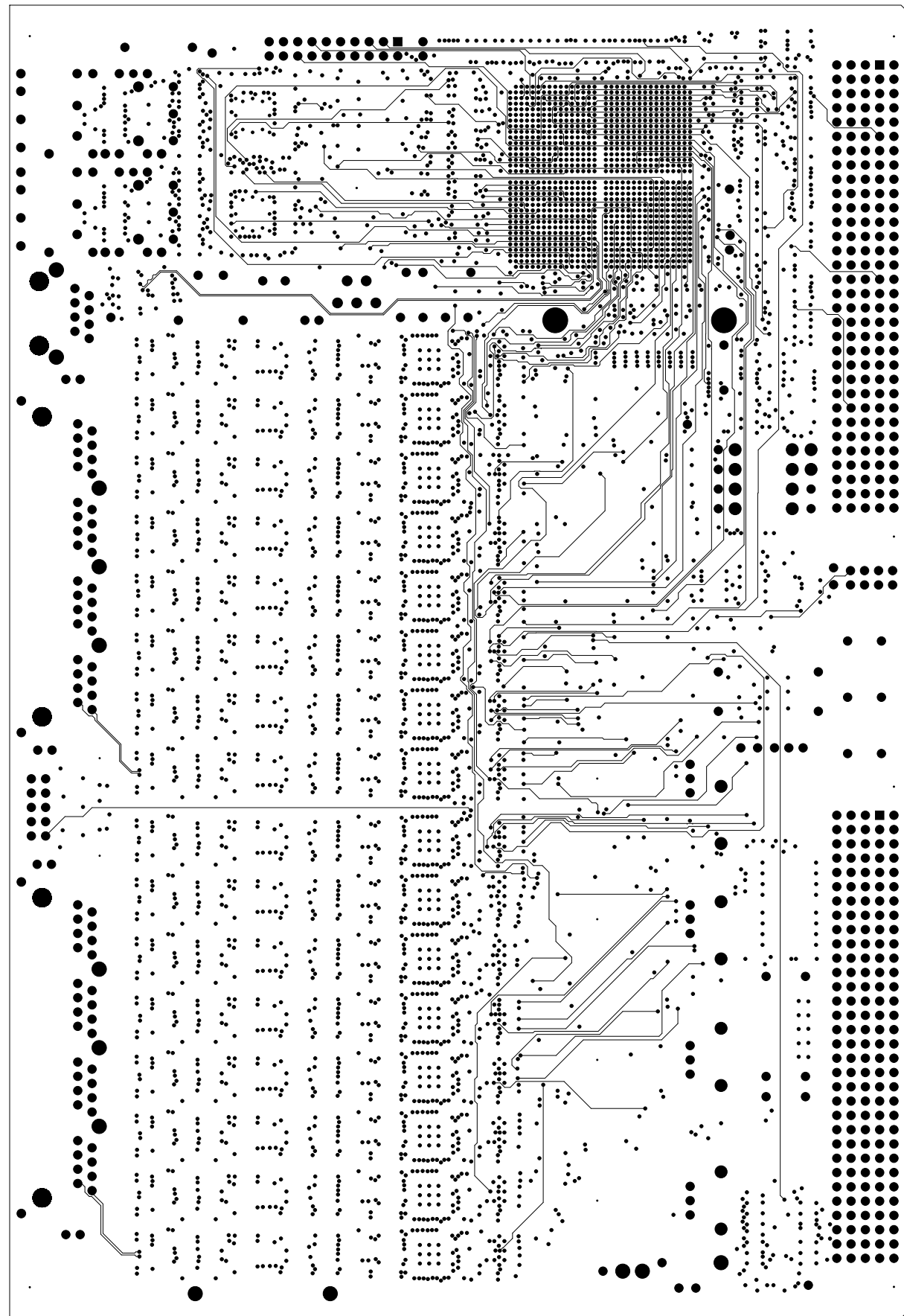
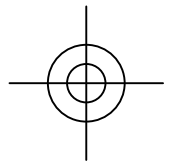
SCHEMATIC DRAWING: B-2605 Rev.D
SPECIFICATION DRAWING: A-2606 Rev.D
ASSEMBLY DRAWING: B-2607 Rev.D

4/27/2017

University of Chicago
Enrico Fermi Institute
Electronics Development Group
Chicago, IL 60637
(773) 702-7801

SIGNAL_10 FILM13, LAYER_13





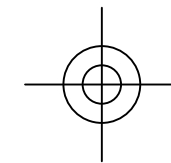
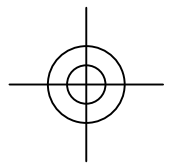
14-BIT ADC Board

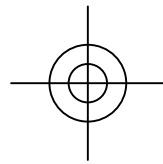
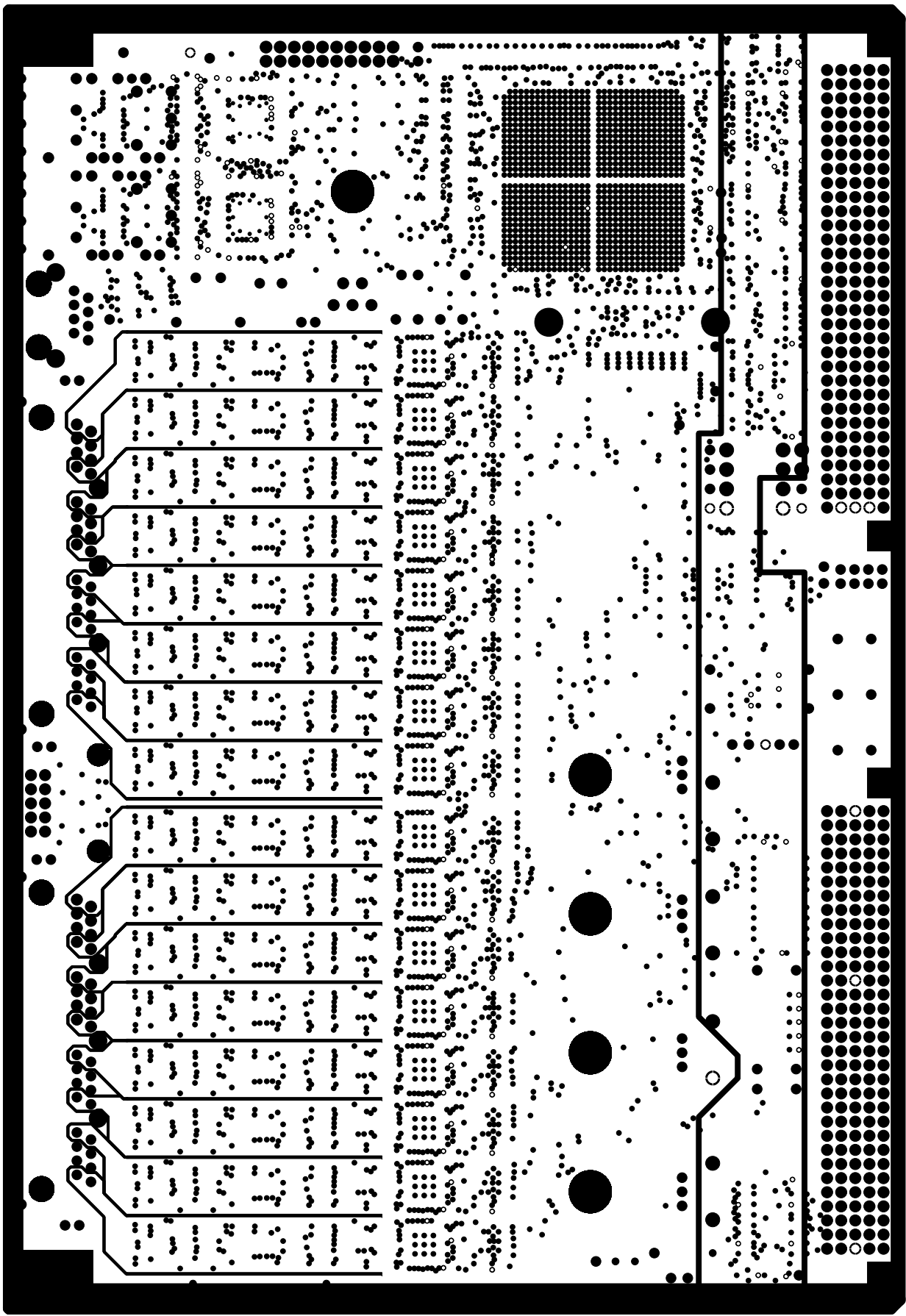
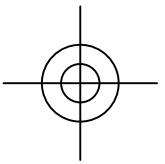
SCHEMATIC DRAWING: B-2605 Rev.D
SPECIFICATION DRAWING: A-2606 Rev.D
ASSEMBLY DRAWING: B-2607 Rev.D

4/27/2017

University of Chicago
Enrico Fermi Institute
Electronics Development Group
Chicago, IL 60637
(773) 702-7801

SIGNAL_5 FILM14, LAYER_14





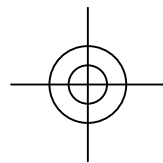
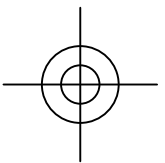
14-BIT ADC Board

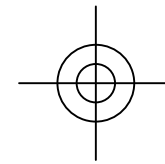
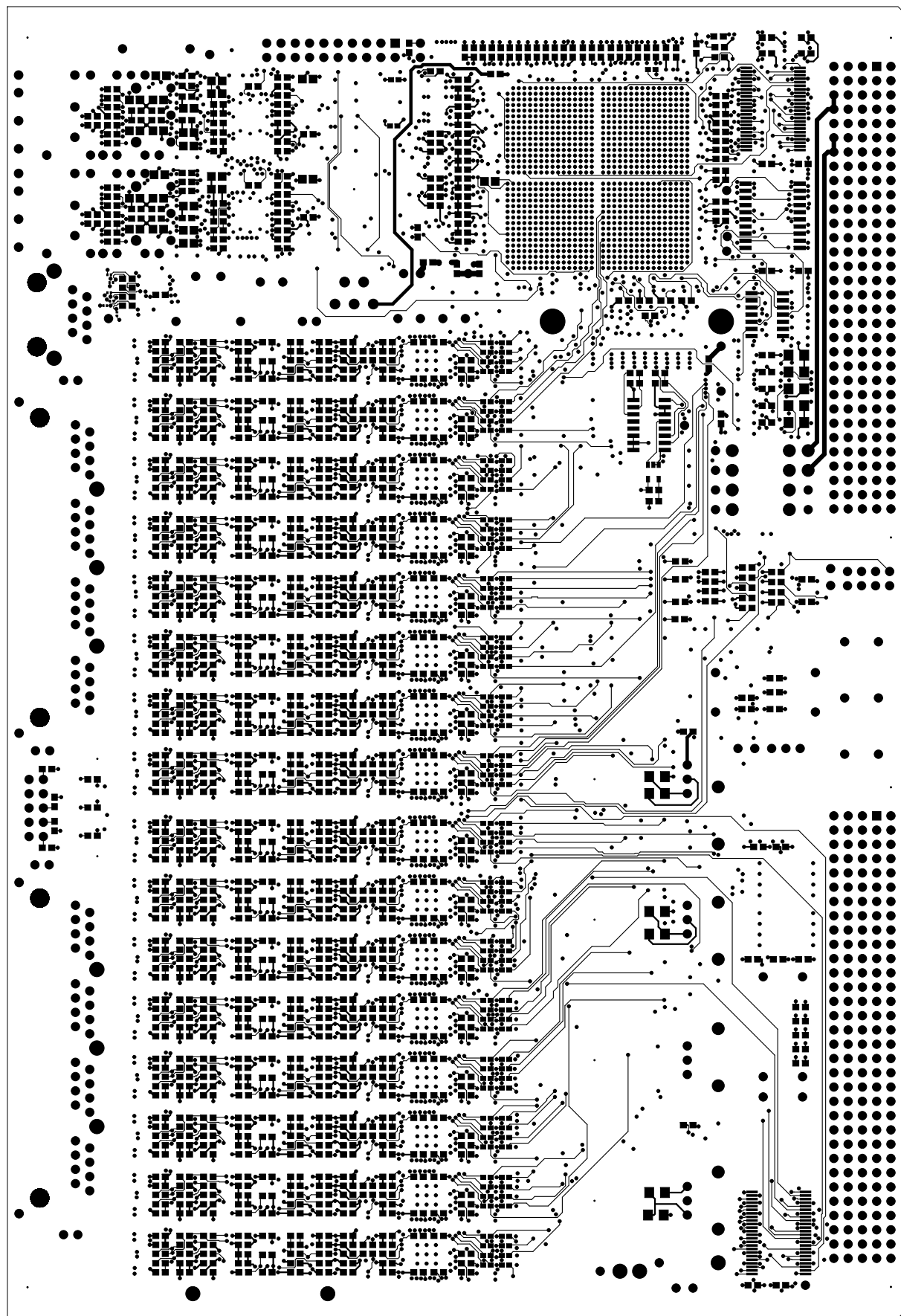
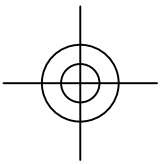
SCHEMATIC DRAWING: B-2605 Rev.D
SPECIFICATION DRAWING: A-2606 Rev.D
ASSEMBLY DRAWING: B-2607 Rev.D

4/27/2017

University of Chicago
Enrico Fermi Institute
Electronics Development Group
Chicago, IL 60637
(773) 702-7801

POWER: +5V, VCC, +2.5V, FILM15, LAYER_15





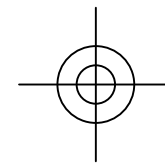
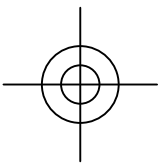
14-BIT ADC Board

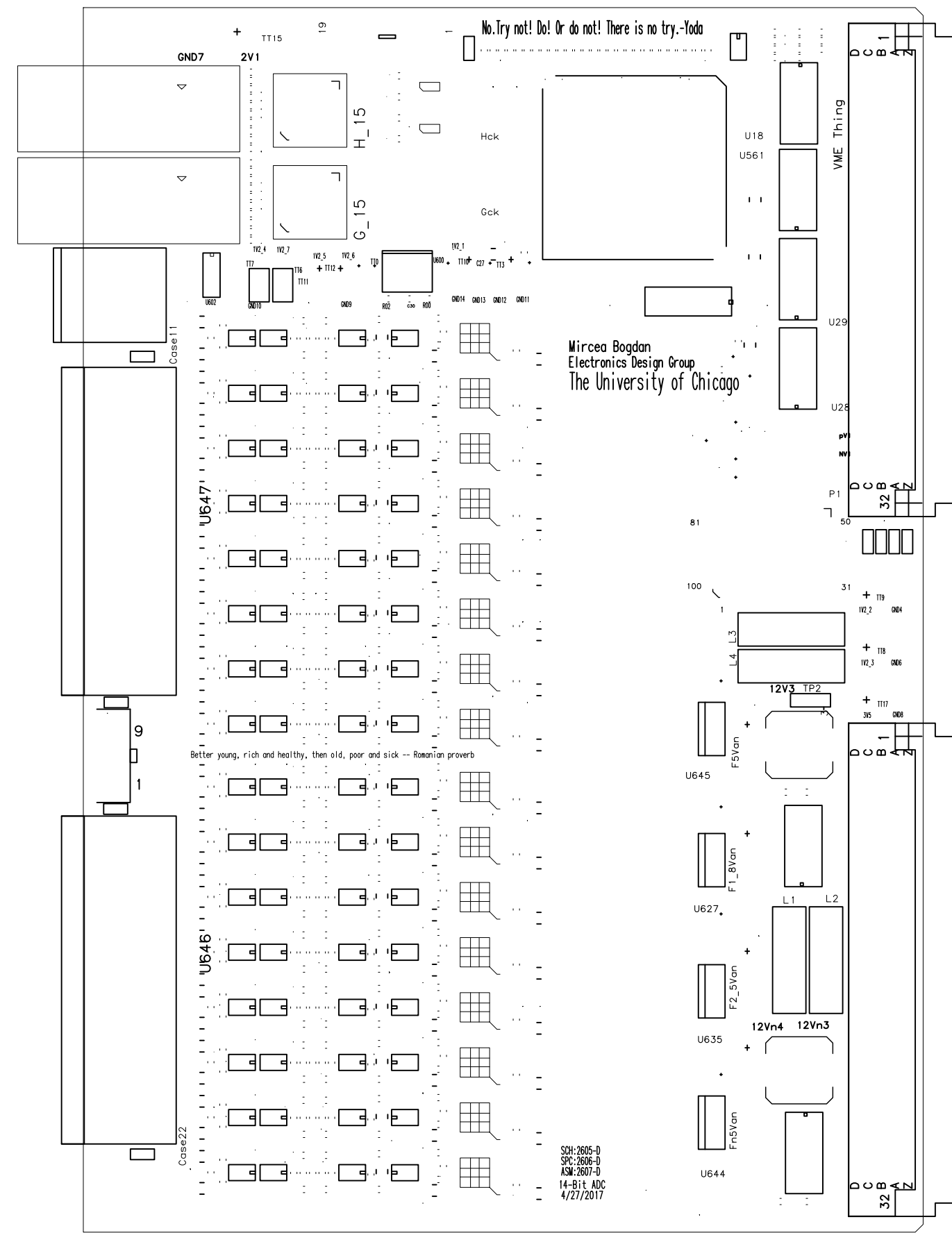
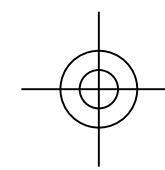
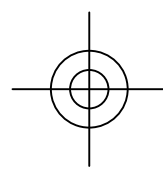
SCHEMATIC DRAWING: B-2605 Rev.D
SPECIFICATION DRAWING: A-2606 Rev.D
ASSEMBLY DRAWING: B-2607 Rev.D

4/27/2017

University of Chicago
Enrico Fermi Institute
Electronics Development Group
Chicago, IL 60637
(773) 702-7801

Bottom, SIGNAL_6, FILM12, LAYER_16





No. Try not! Do! Or do not! There is no try.-Yoda

Mircea Bogdan
Electronics Design Group
The University of Chicago

Better young, rich and healthy, then old, poor and sick -- Romanian proverb

SCH:2605-D
SPC:2606-D
ASM:2607-D
14-Bit ADC
4/27/2017

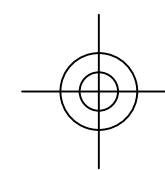
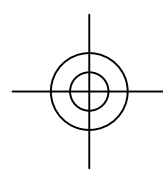
14-BIT ADC Board

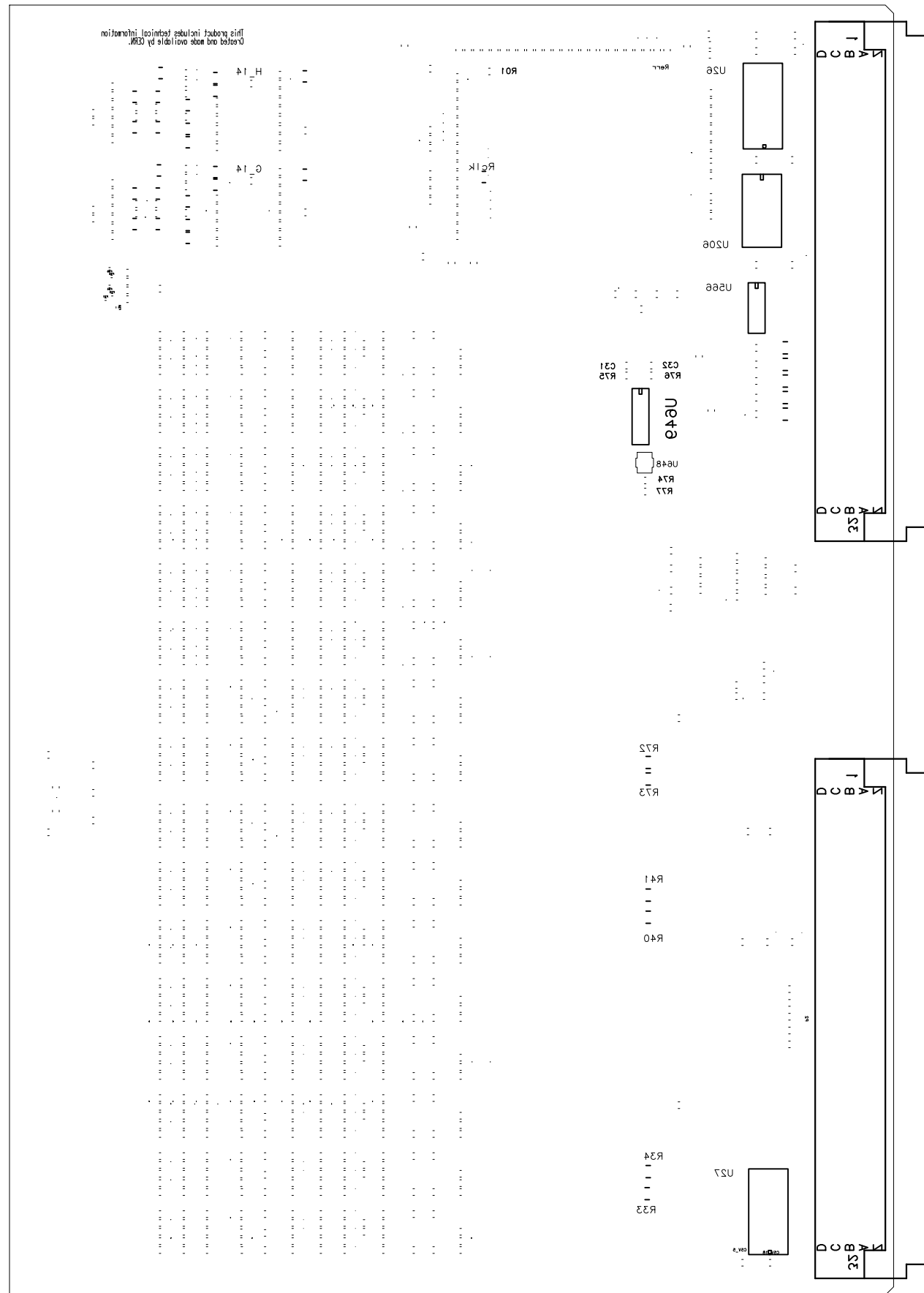
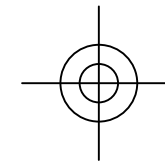
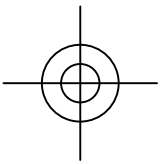
SCHEMATIC DRAWING: B-2605 Rev.D
SPECIFICATION DRAWING: A-2606 Rev.D
ASSEMBLY DRAWING: B-2607 Rev.D

4/27/2017

University of Chicago
Enrico Fermi Institute
Electronics Development Group
Chicago, IL 60637
(773) 702-7801

COMPONENT SIDE SILKSCREEN FILM17





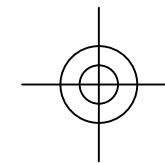
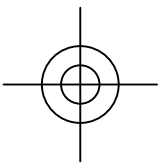
14-BIT ADC Board

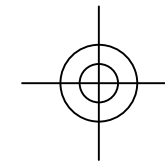
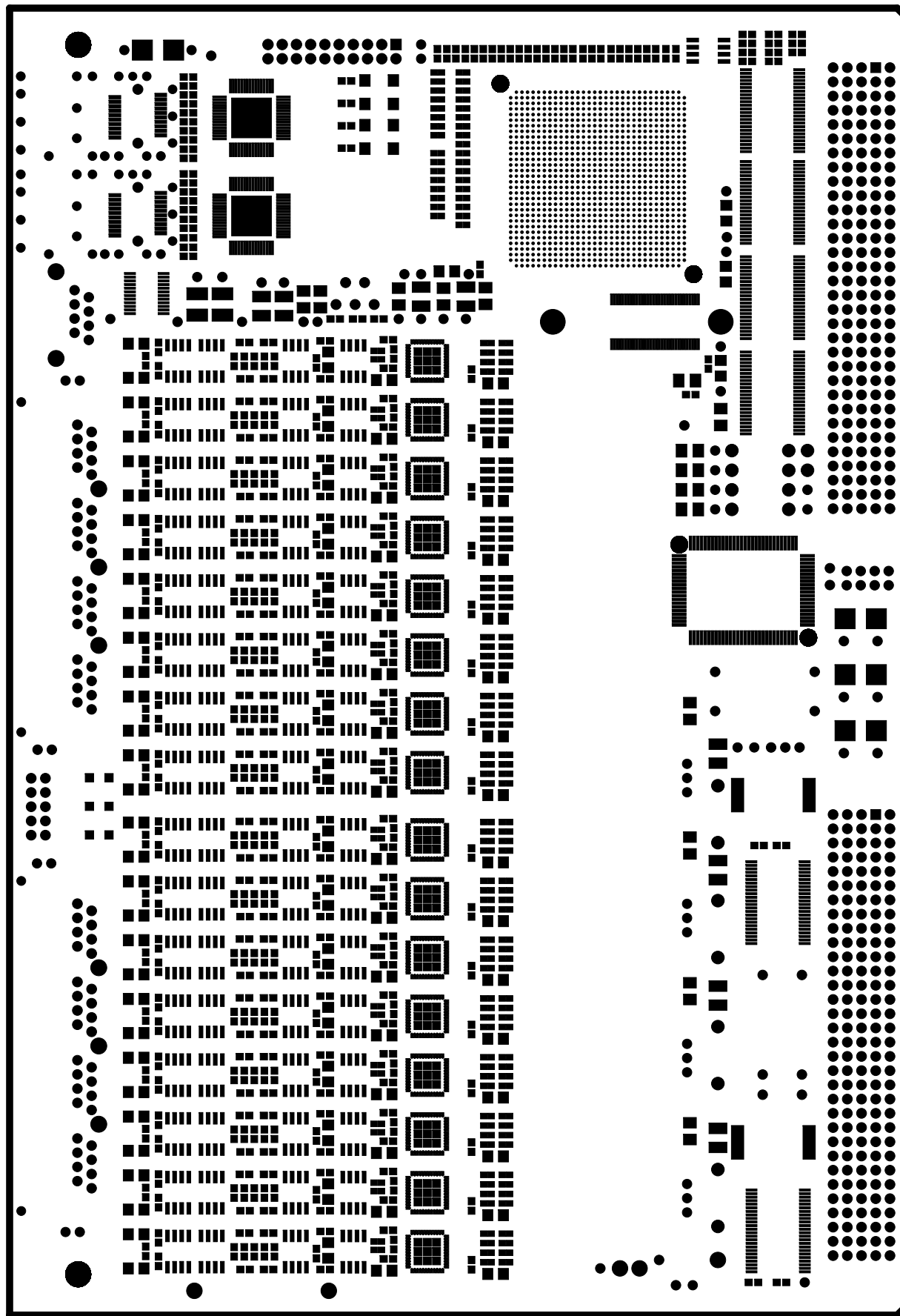
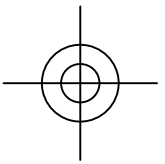
SCHEMATIC DRAWING: B-2605 Rev.D
SPECIFICATION DRAWING: A-2606 Rev.D
ASSEMBLY DRAWING: B-2607 Rev.D

4/27/2017

University of Chicago
Enrico Fermi Institute
Electronics Development Group
Chicago, IL 60637
(773) 702-7801

SOLDER SIDE SILKSCREEN FILM18





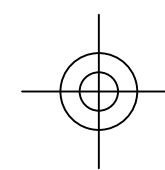
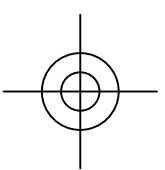
14-BIT ADC Board

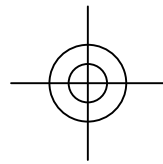
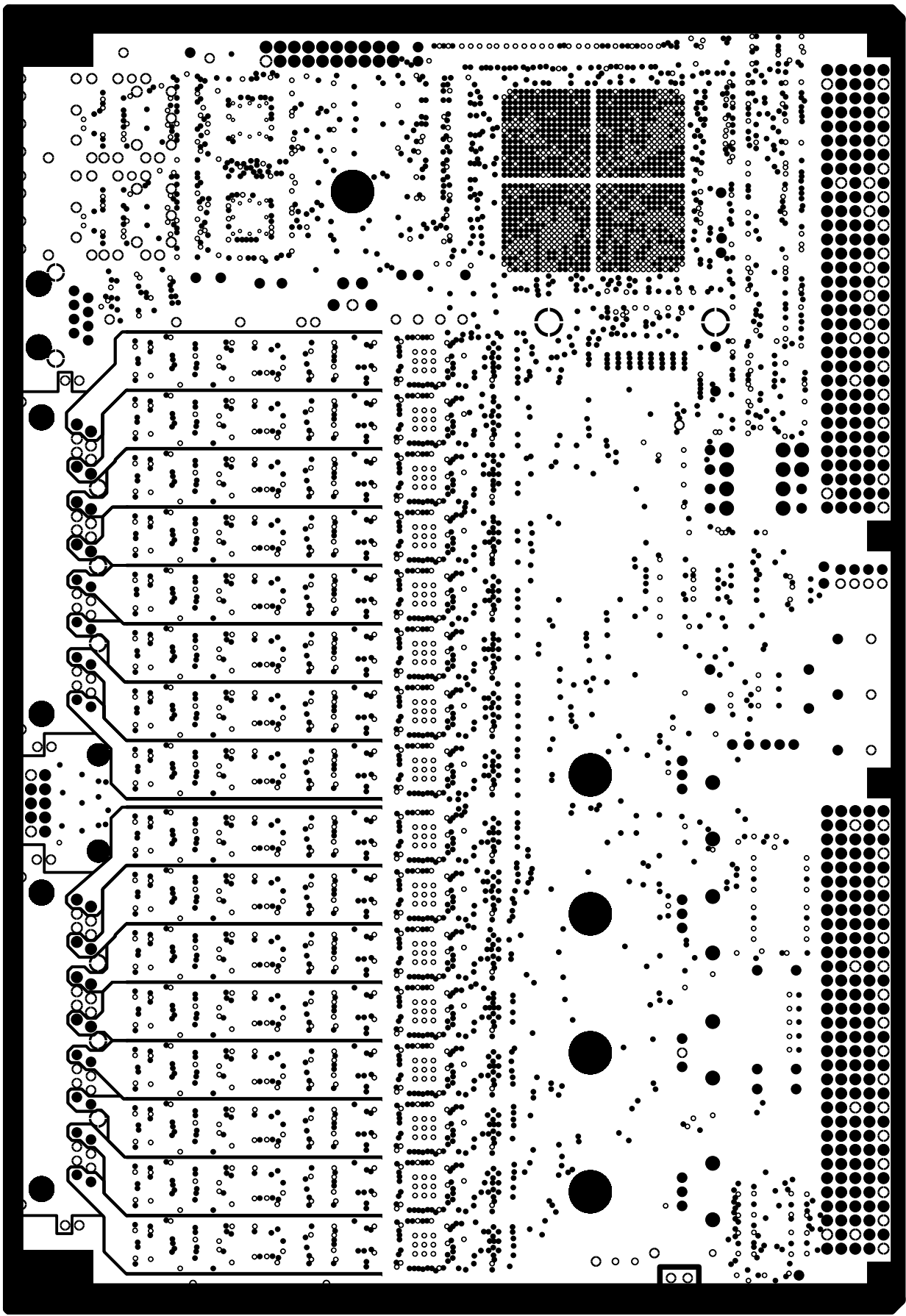
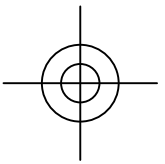
SCHEMATIC DRAWING: B-2605 Rev.D
SPECIFICATION DRAWING: A-2606 Rev.D
ASSEMBLY DRAWING: B-2607 Rev.D

4/27/2017

University of Chicago
Enrico Fermi Institute
Electronics Development Group
Chicago, IL 60637
(773) 702-7801

COMPONENT SIDE SOLDERMASK FILM19





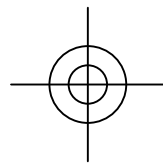
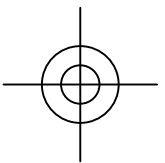
14-BIT ADC Board

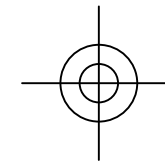
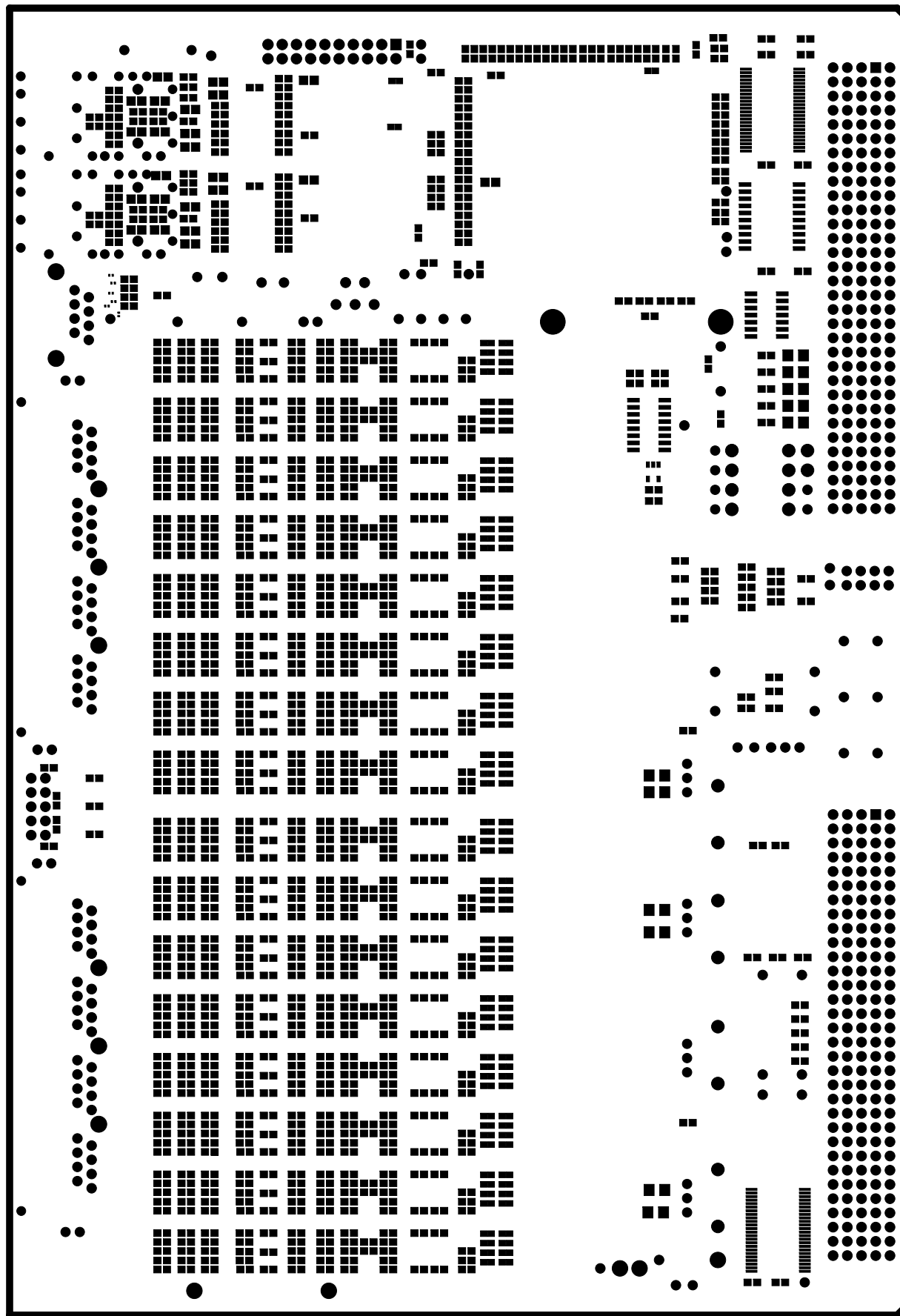
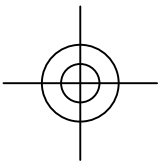
SCHEMATIC DRAWING: B-2605 Rev.D
SPECIFICATION DRAWING: A-2606 Rev.D
ASSEMBLY DRAWING: B-2607 Rev.D

4/27/2017

University of Chicago
Enrico Fermi Institute
Electronics Development Group
Chicago, IL 60637
(773) 702-7801

POWER: GROUND, FILM2, LAYER_2





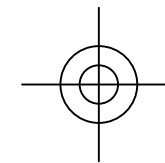
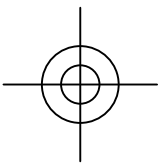
14-BIT ADC Board

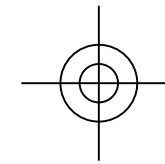
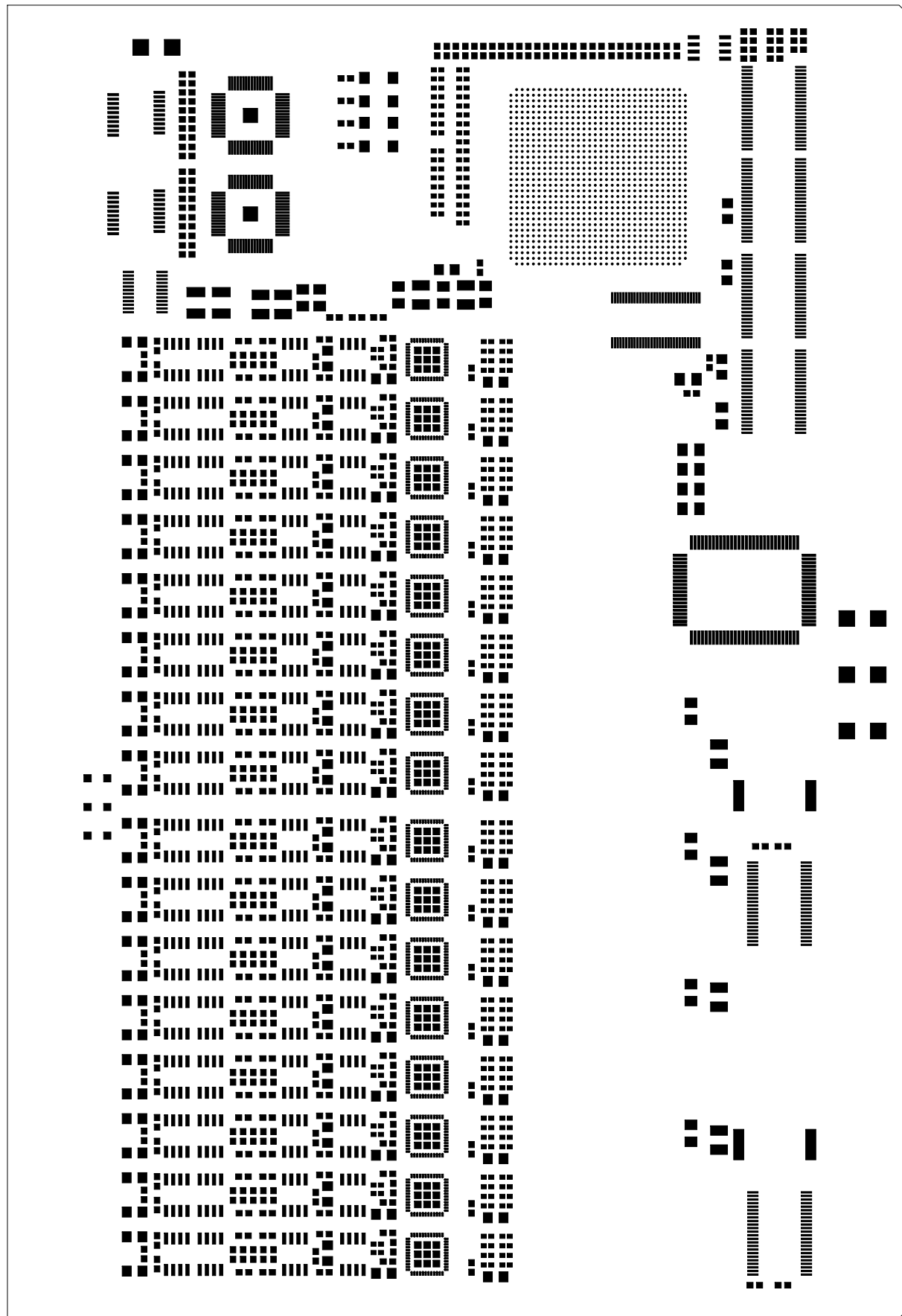
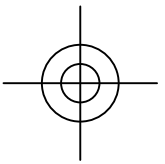
SCHEMATIC DRAWING: B-2605 Rev.D
SPECIFICATION DRAWING: A-2606 Rev.D
ASSEMBLY DRAWING: B-2607 Rev.D

4/27/2017

University of Chicago
Enrico Fermi Institute
Electronics Development Group
Chicago, IL 60637
(773) 702-7801

SOLDER SIDE SOLDERMASK FILM20





14-BIT ADC Board

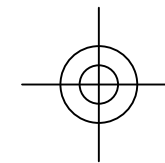
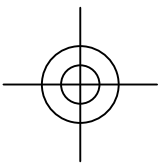
SCHEMATIC DRAWING: B-2605 Rev.D
SPECIFICATION DRAWING: A-2606 Rev.D
ASSEMBLY DRAWING: B-2607 Rev.D

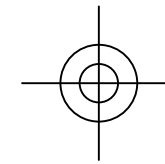
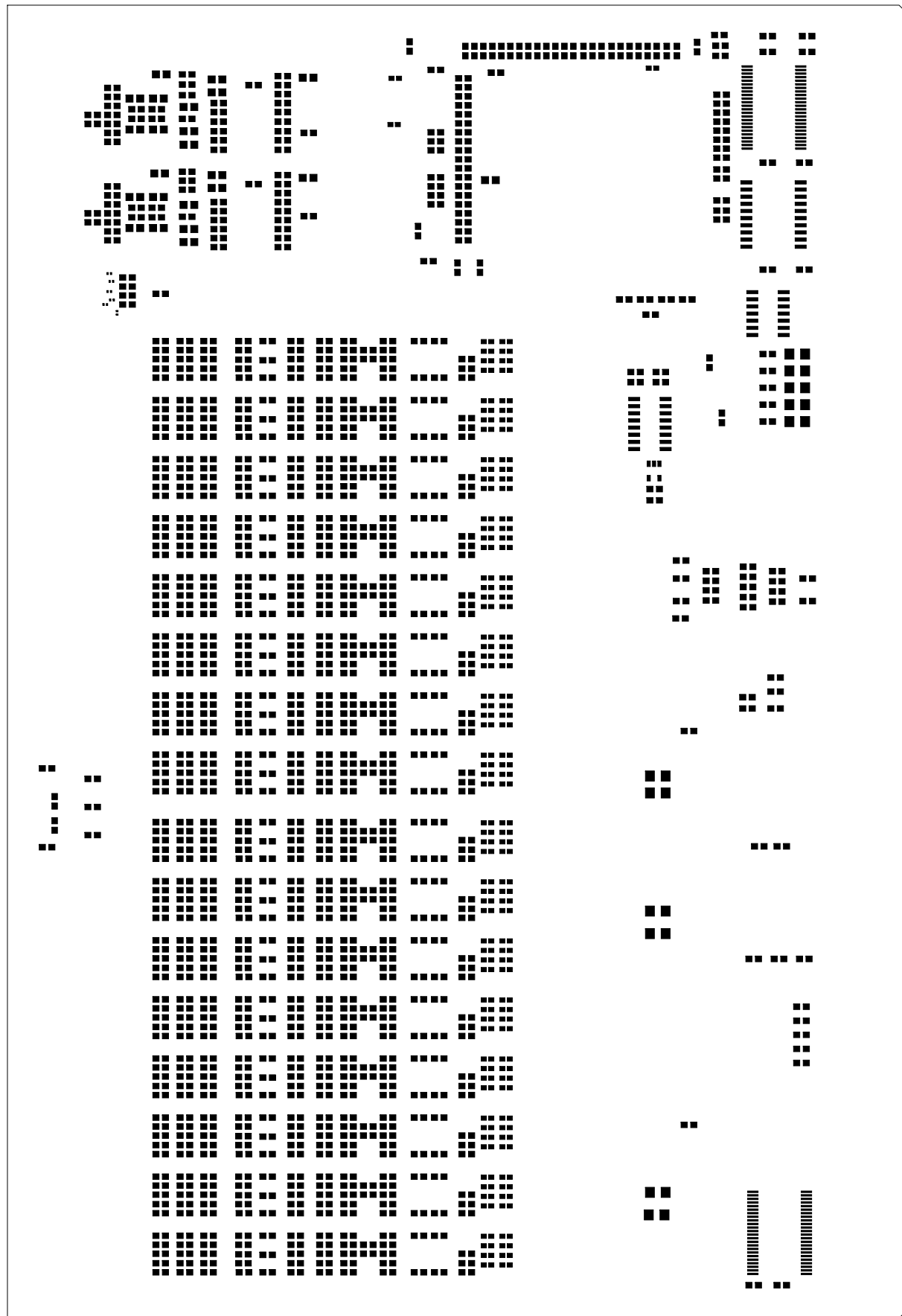
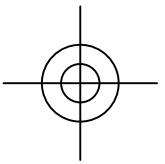
4/27/2017

University of Chicago
Enrico Fermi Institute
Electronics Development Group
Chicago, IL 60637
(773) 702-7801

PASTE MASK 1

FILM21





14-BIT ADC Board

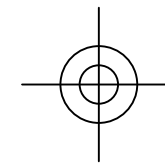
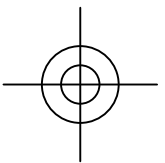
SCHEMATIC DRAWING: B-2605 Rev.D
SPECIFICATION DRAWING: A-2606 Rev.D
ASSEMBLY DRAWING: B-2607 Rev.D

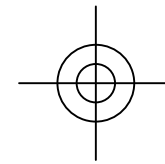
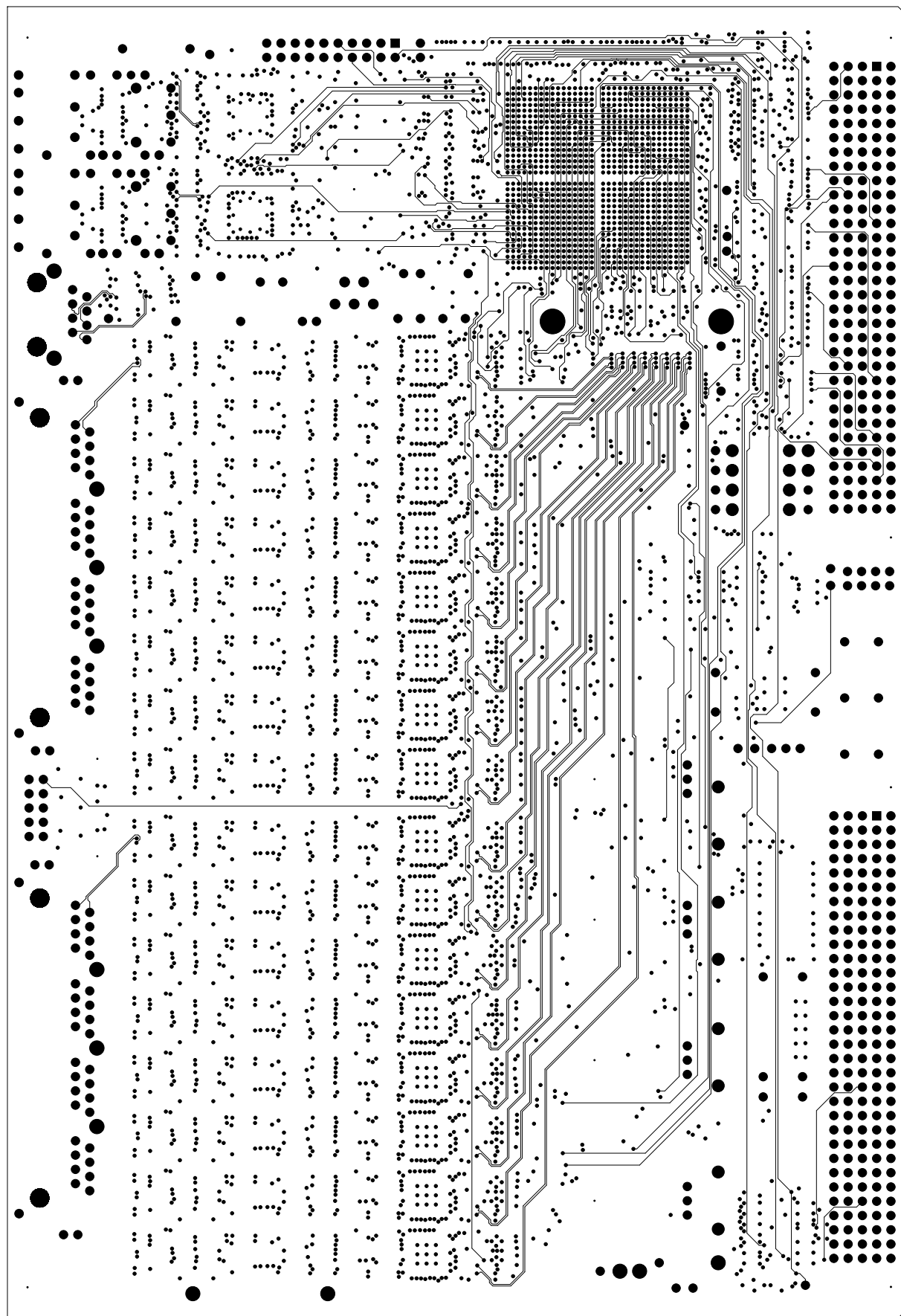
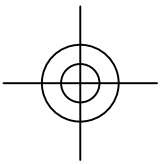
4/27/2017

University of Chicago
Enrico Fermi Institute
Electronics Development Group
Chicago, IL 60637
(773) 702-7801

PASTE MASK 2

FILM22





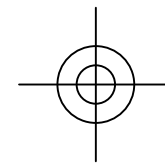
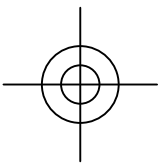
14-BIT ADC Board

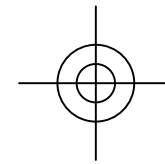
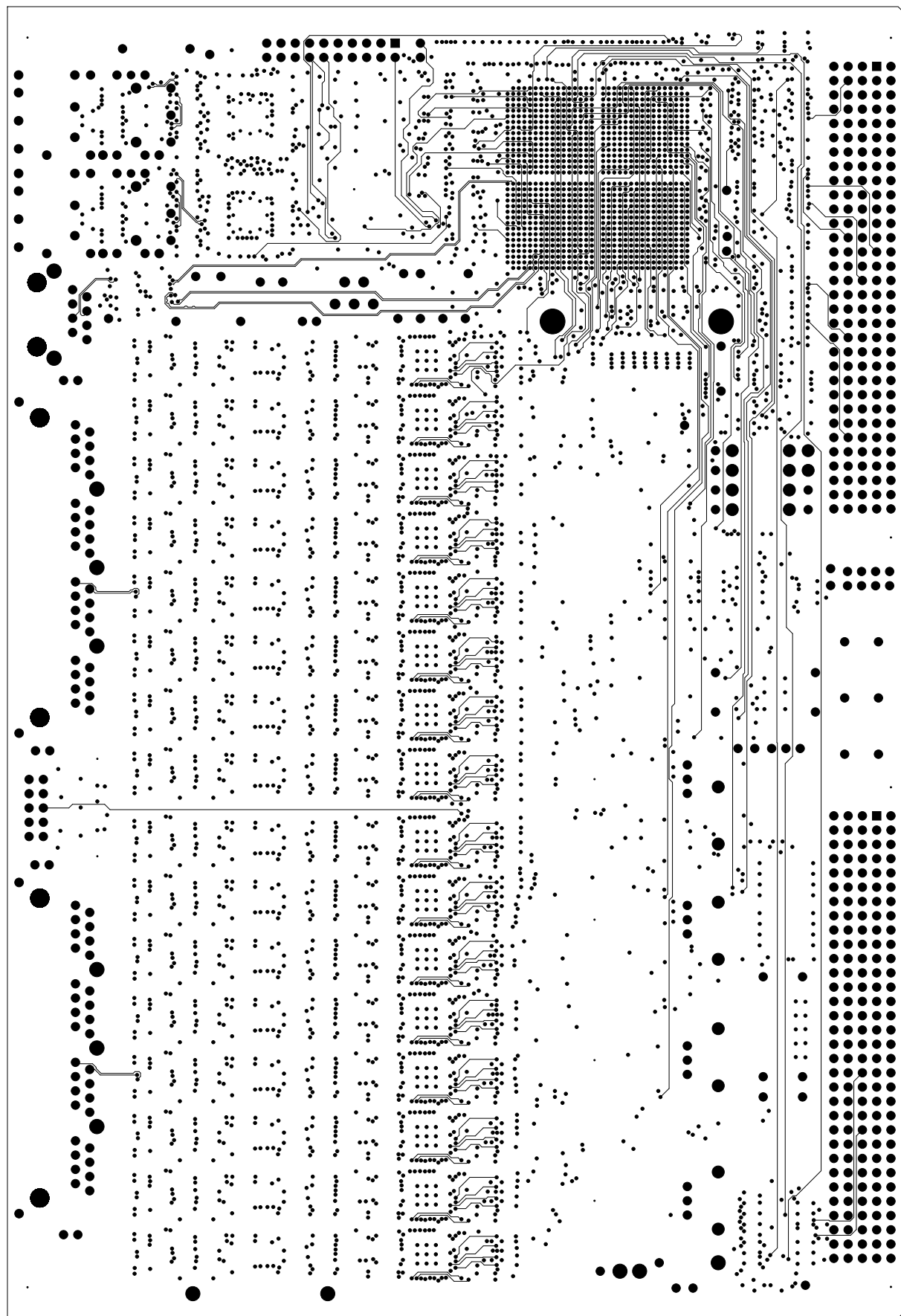
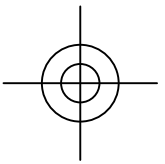
SCHEMATIC DRAWING: B-2605 Rev.D
SPECIFICATION DRAWING: A-2606 Rev.D
ASSEMBLY DRAWING: B-2607 Rev.D

4/27/2017

University of Chicago
Enrico Fermi Institute
Electronics Development Group
Chicago, IL 60637
(773) 702-7801

SIGNAL_7 FILM3, LAYER_3





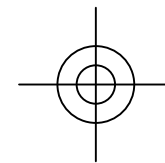
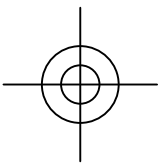
14-BIT ADC Board

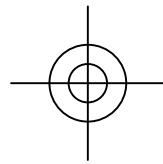
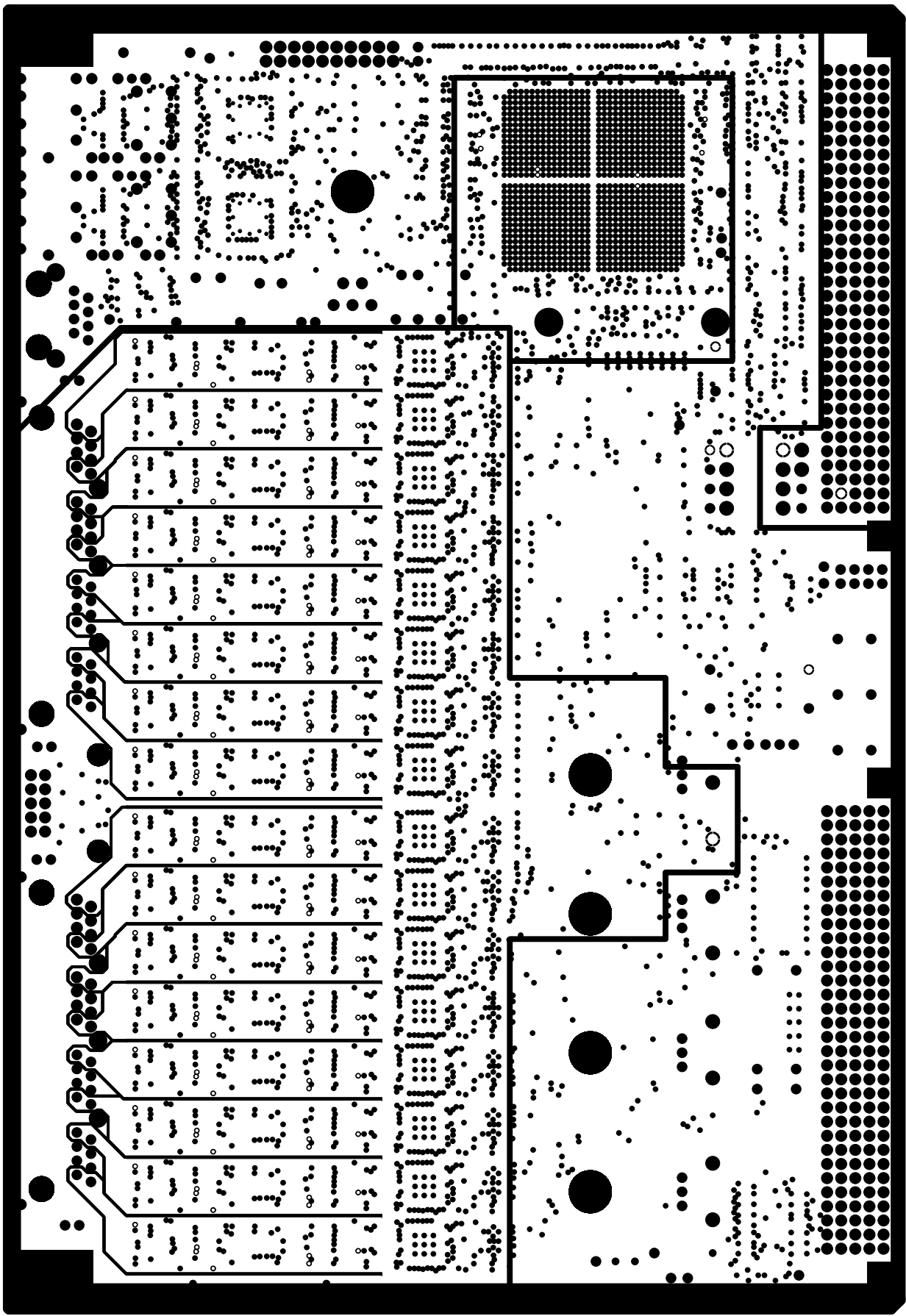
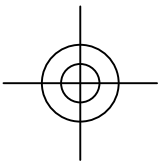
SCHEMATIC DRAWING: B-2605 Rev.D
SPECIFICATION DRAWING: A-2606 Rev.D
ASSEMBLY DRAWING: B-2607 Rev.D

4/27/2017

University of Chicago
Enrico Fermi Institute
Electronics Development Group
Chicago, IL 60637
(773) 702-7801

SIGNAL_2 FILM4, LAYER_4





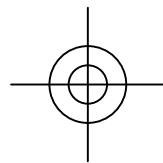
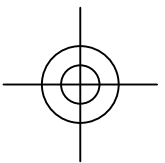
14-BIT ADC Board

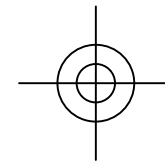
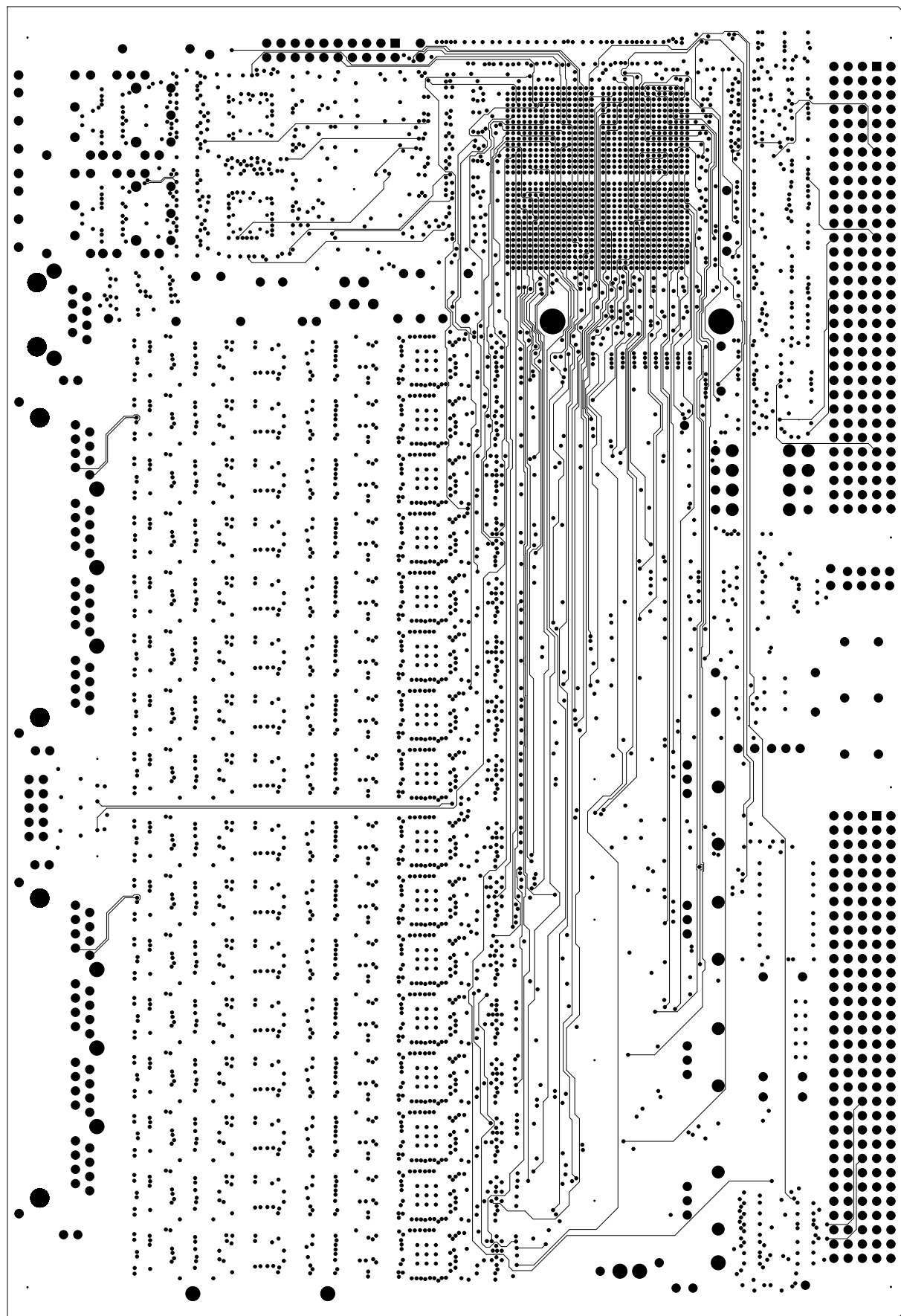
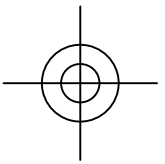
SCHEMATIC DRAWING: B-2605 Rev.D
SPECIFICATION DRAWING: A-2606 Rev.D
ASSEMBLY DRAWING: B-2607 Rev.D

4/27/2017

University of Chicago
Enrico Fermi Institute
Electronics Development Group
Chicago, IL 60637
(773) 702-7801

POWER: +3.3V_PLL, +5Van, +12V, +12Vin, FILM5, LAYER_5





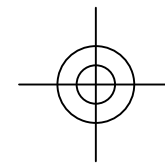
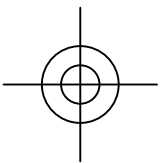
14-BIT ADC Board

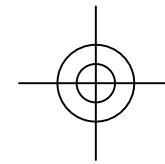
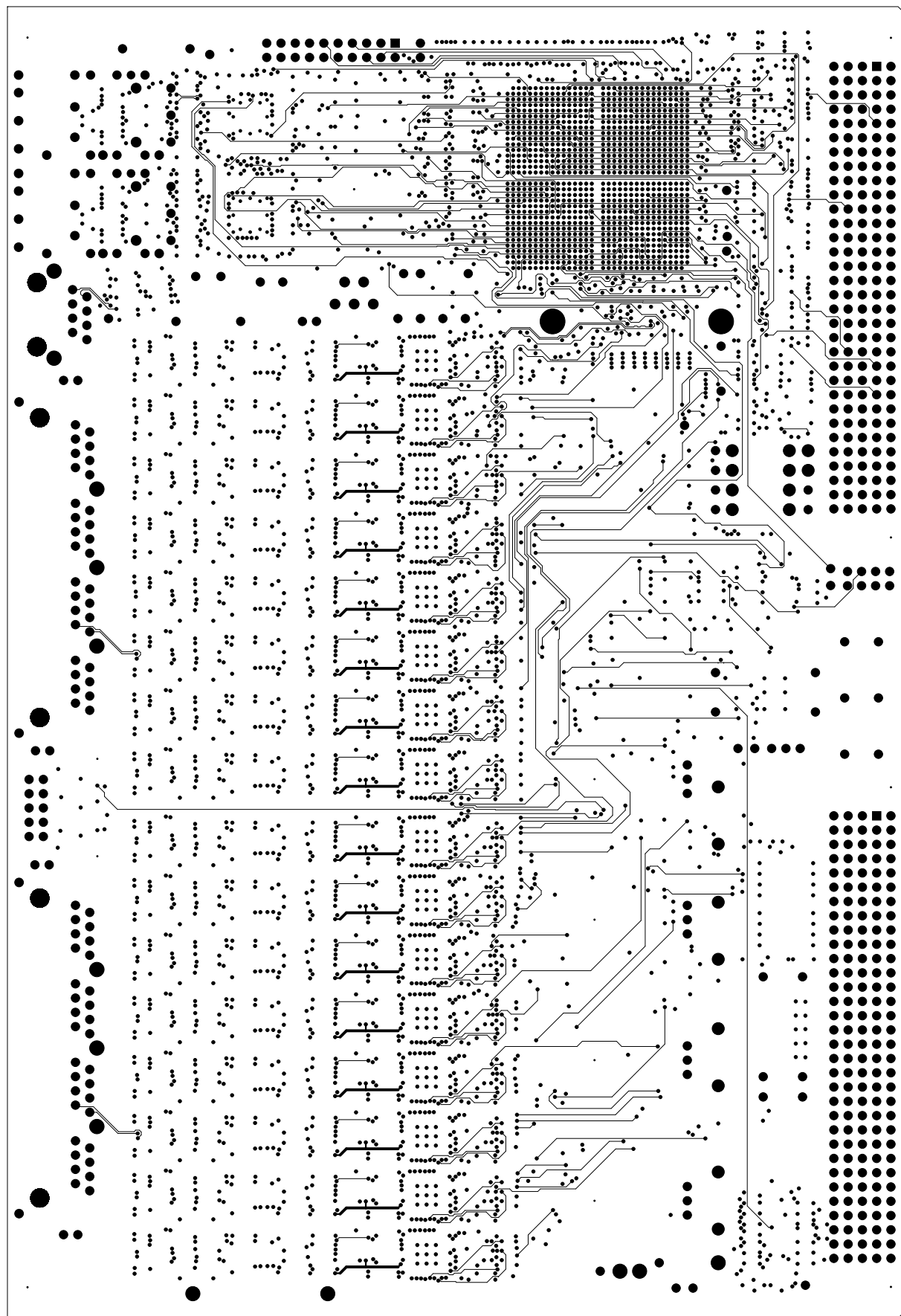
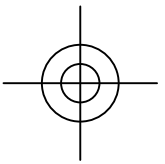
SCHEMATIC DRAWING: B-2605 Rev.D
SPECIFICATION DRAWING: A-2606 Rev.D
ASSEMBLY DRAWING: B-2607 Rev.D

4/27/2017

University of Chicago
Enrico Fermi Institute
Electronics Development Group
Chicago, IL 60637
(773) 702-7801

SIGNAL_8 FILM6, LAYER_6





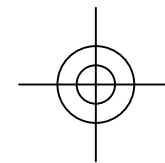
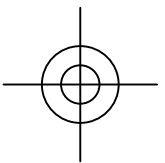
14-BIT ADC Board

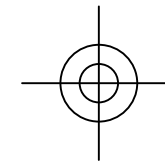
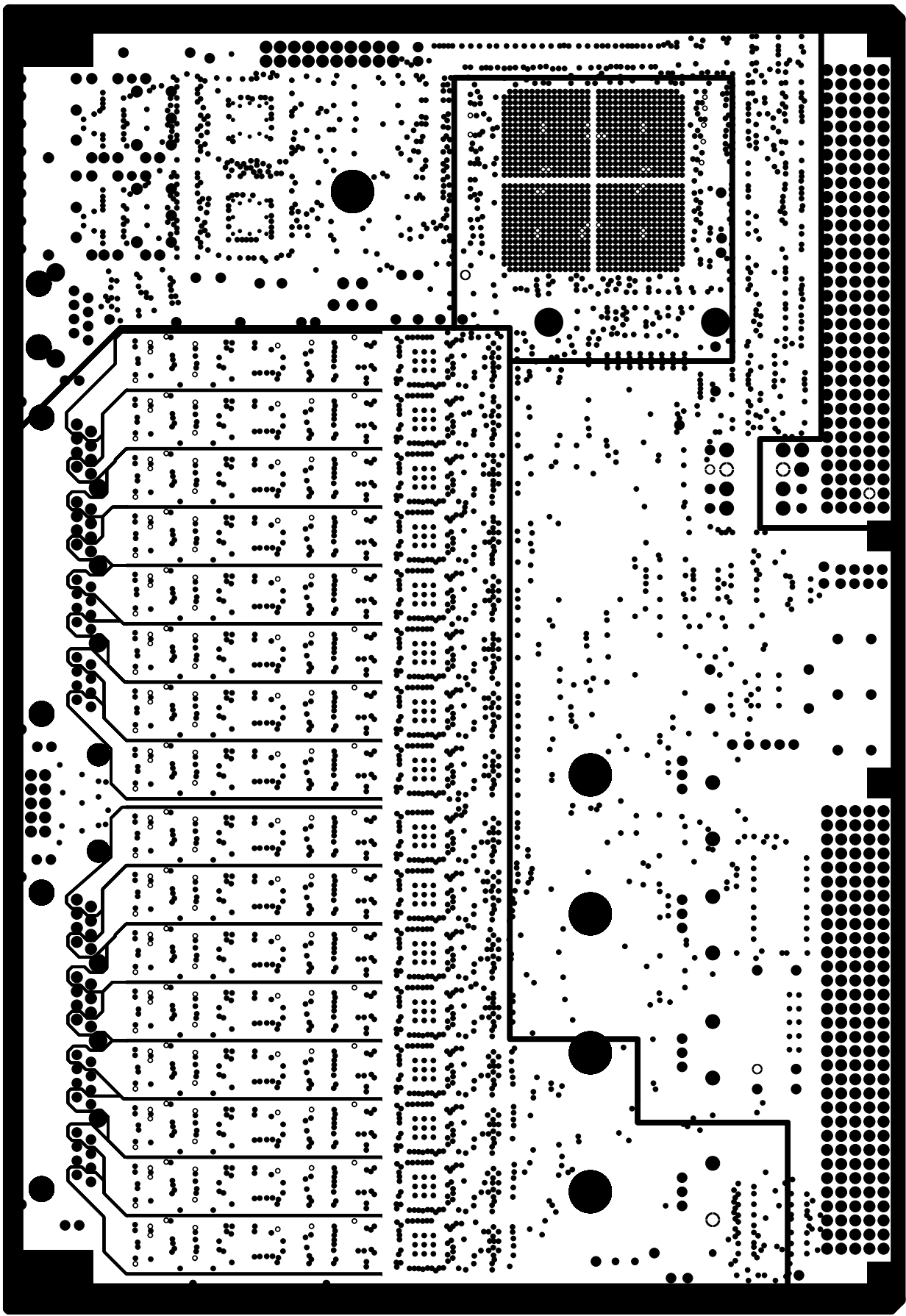
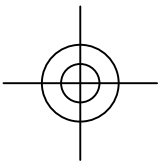
SCHEMATIC DRAWING: B-2605 Rev.D
SPECIFICATION DRAWING: A-2606 Rev.D
ASSEMBLY DRAWING: B-2607 Rev.D

4/27/2017

University of Chicago
Enrico Fermi Institute
Electronics Development Group
Chicago, IL 60637
(773) 702-7801

SIGNAL_3 FILM7, LAYER_7





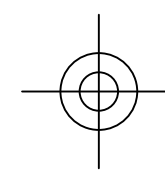
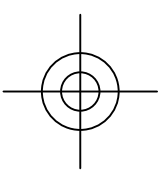
14-BIT ADC Board

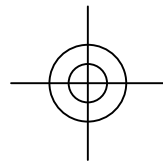
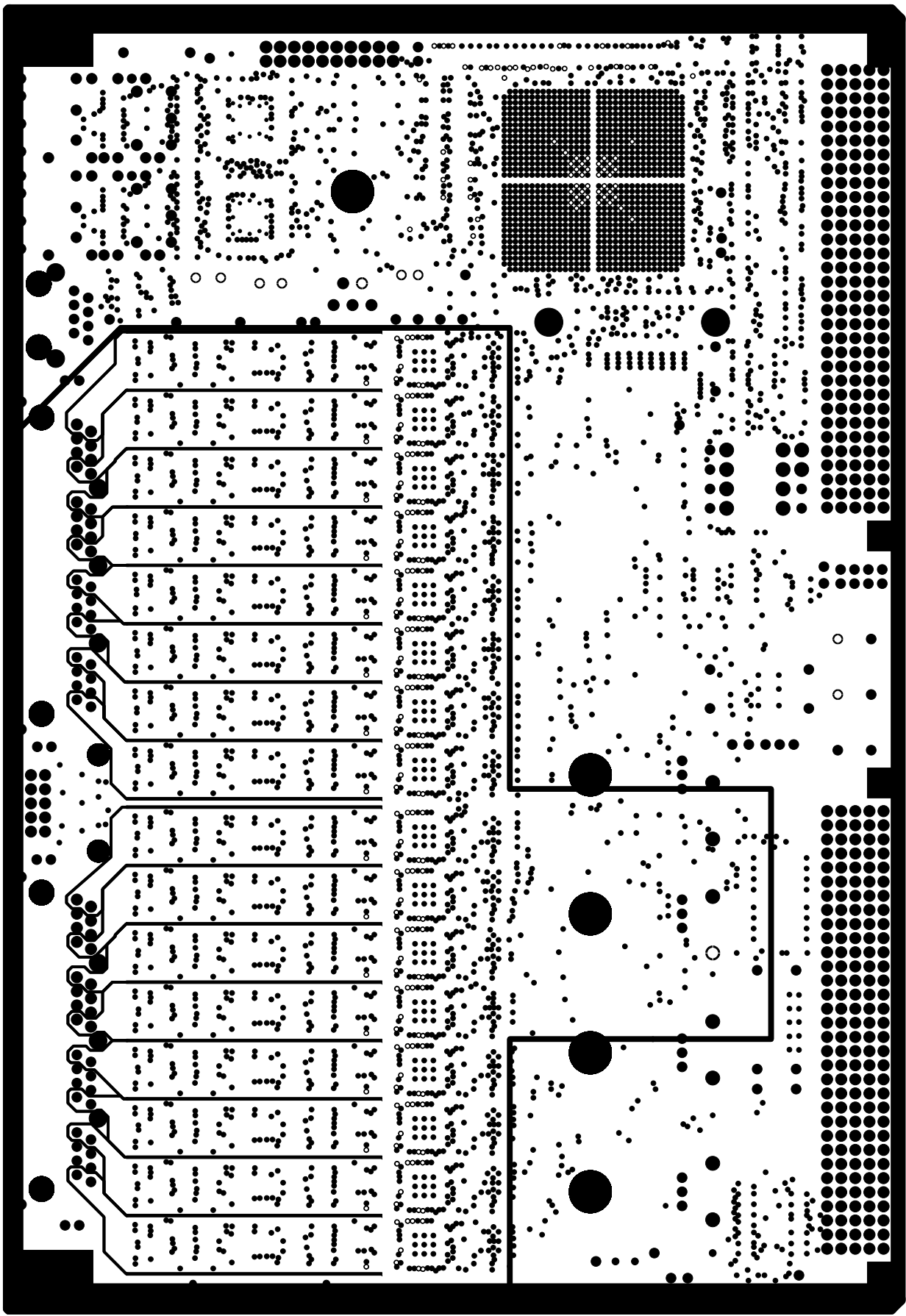
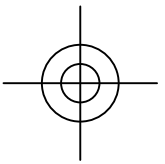
SCHEMATIC DRAWING: B-2605 Rev.D
SPECIFICATION DRAWING: A-2606 Rev.D
ASSEMBLY DRAWING: B-2607 Rev.D

4/27/2017

University of Chicago
Enrico Fermi Institute
Electronics Development Group
Chicago, IL 60637
(773) 702-7801

POWER: +1.2V_PLL, -12V, -12Vin, -5V_{an}, FILM8, LAYER_8





14-BIT ADC Board

SCHEMATIC DRAWING: B-2605 Rev.D
SPECIFICATION DRAWING: A-2606 Rev.D
ASSEMBLY DRAWING: B-2607 Rev.D

4/27/2017

University of Chicago
Enrico Fermi Institute
Electronics Development Group
Chicago, IL 60637
(773) 702-7801

POWER: +1.2V, +1.8V, FILM9, LAYER_9

