

14-BIT ADC Board

SCHEMATIC DRAWING: B-2605 Rev. LEMO

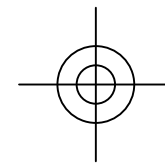
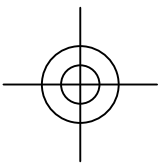
SPECIFICATION DRAWING: A-2606 Rev. LEMO

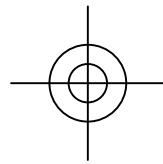
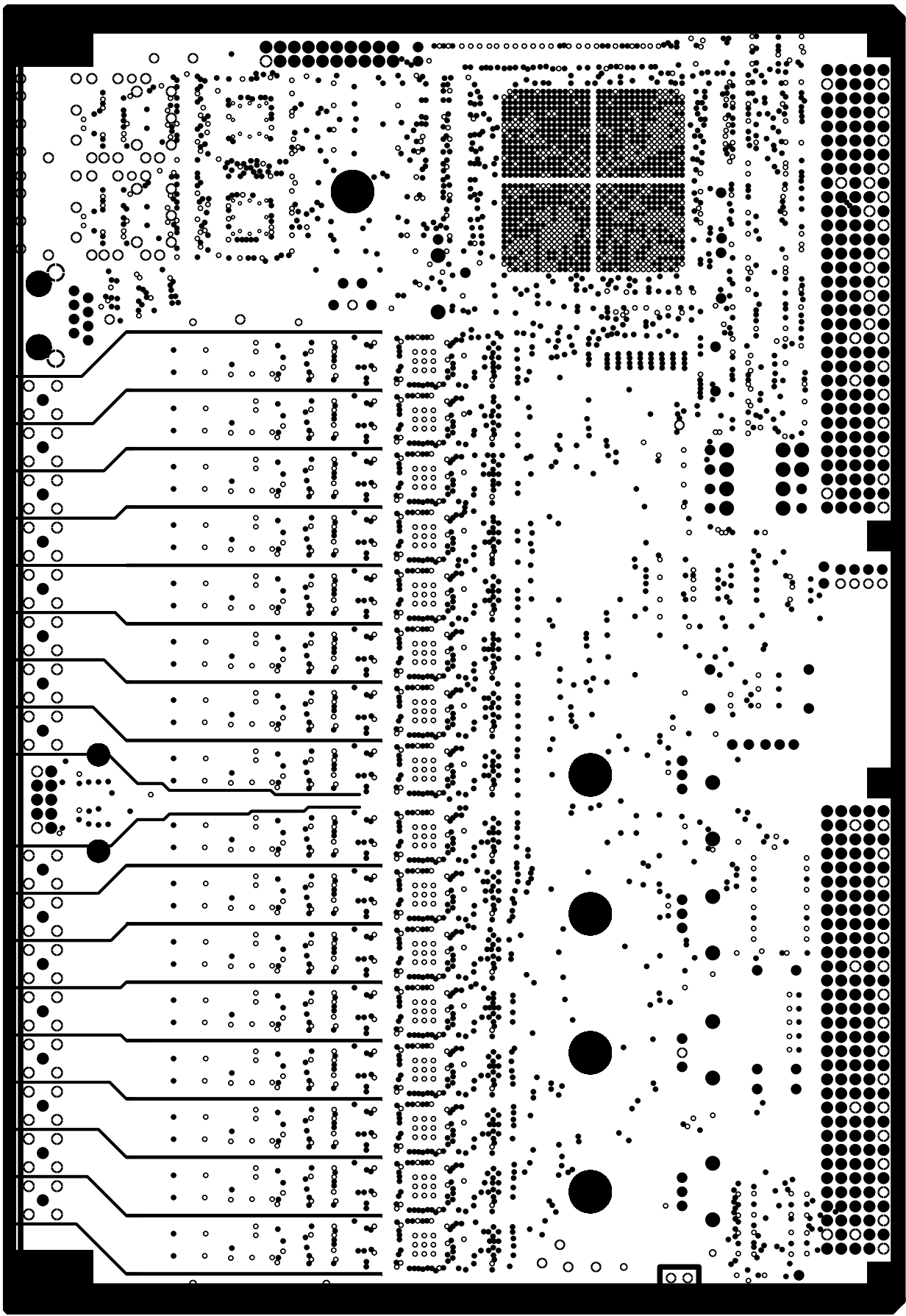
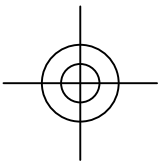
ASSEMBLY DRAWING: B-2607 Rev. LEMO

Jan. 21, 2015

University of Chicago
Enrico Fermi Institute
Electronics Development Group
Chicago, IL 60637
(773) 702-7801

COMPONENT SIDE SIGNAL_1 FILM1, LAYER_1





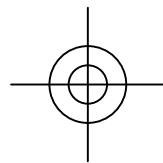
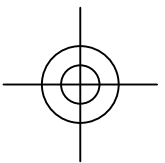
14-BIT ADC Board

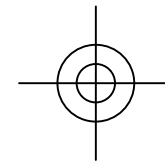
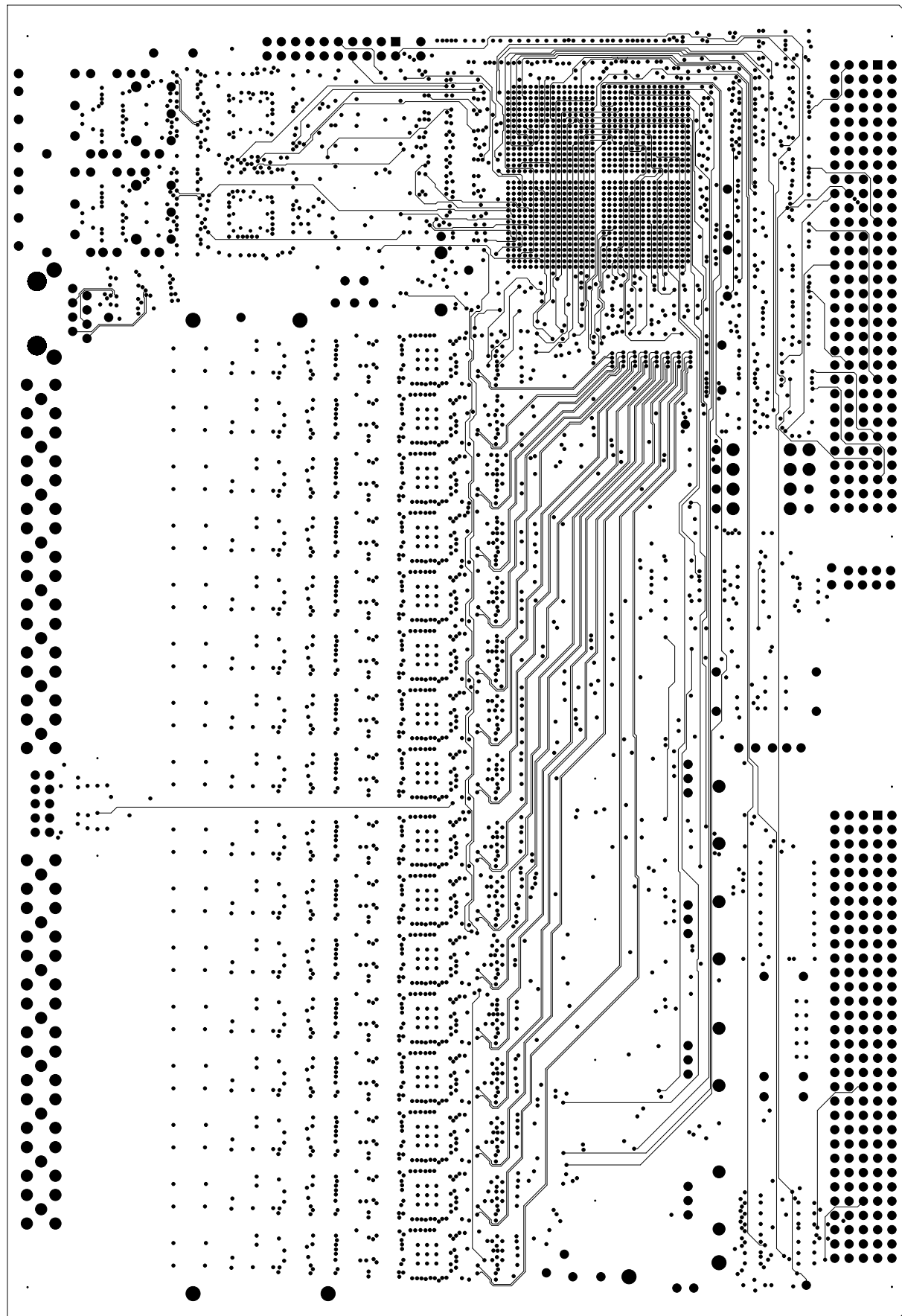
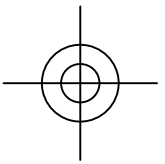
SCHEMATIC DRAWING: B-2605 Rev. LEMO
SPECIFICATION DRAWING: A-2606 Rev. LEMO
ASSEMBLY DRAWING: B-2607 Rev. LEMO

Jan. 21, 2015

University of Chicago
Enrico Fermi Institute
Electronics Development Group
Chicago, IL 60637
(773) 702-7801

POWER: GROUND, FILM2, LAYER_2





14-BIT ADC Board

SCHEMATIC DRAWING: B-2605 Rev. LEMO

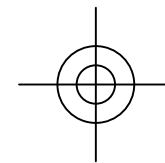
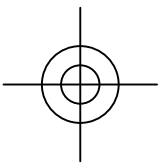
SPECIFICATION DRAWING: A-2606 Rev. LEMO

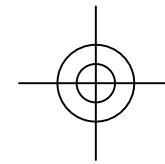
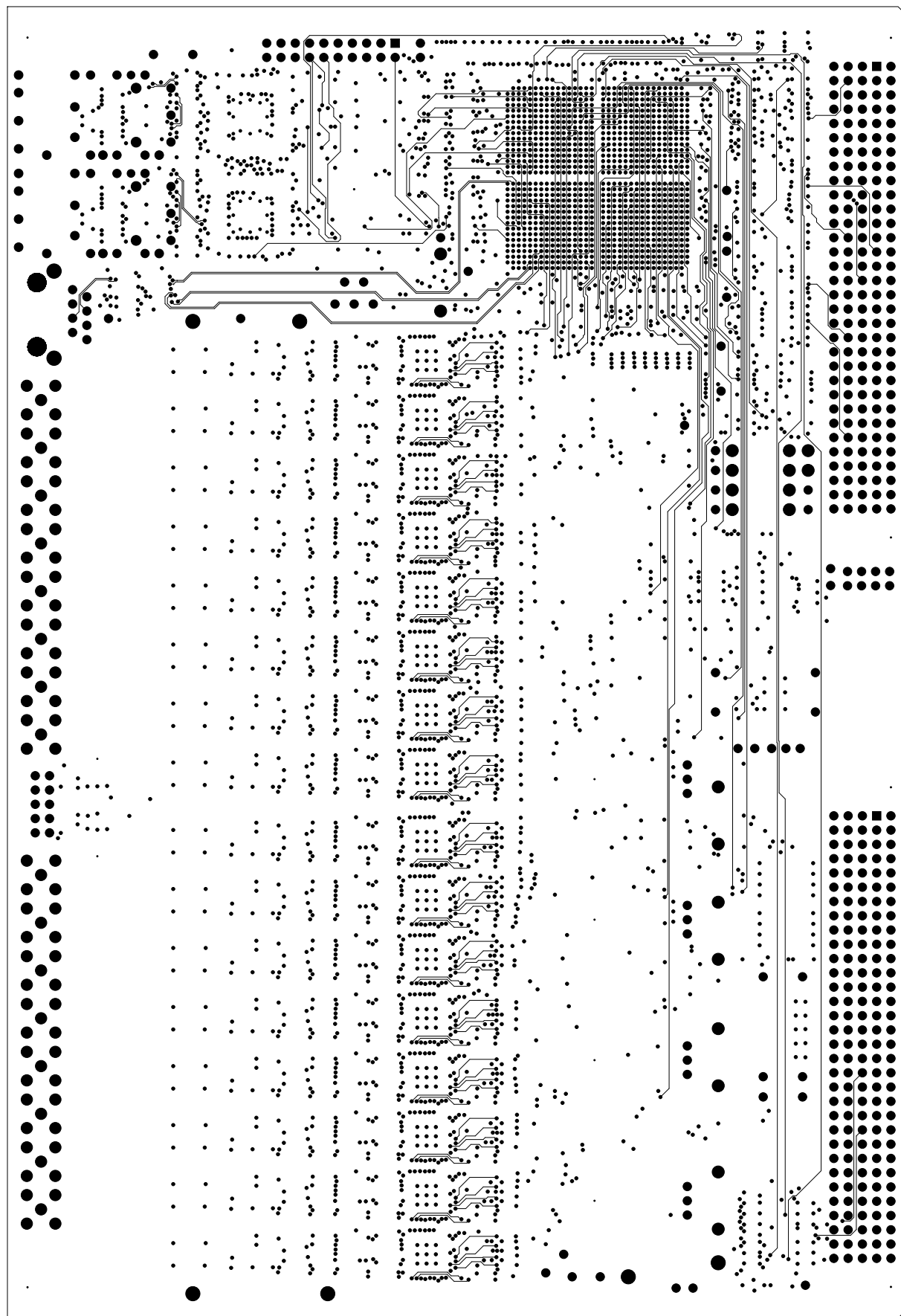
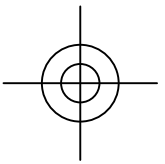
ASSEMBLY DRAWING: B-2607 Rev. LEMO

Jan. 21, 2015

University of Chicago
Enrico Fermi Institute
Electronics Development Group
Chicago, IL 60637
(773) 702-7801

SIGNAL_7 FILM3, LAYER_3





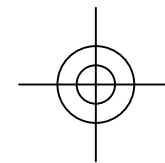
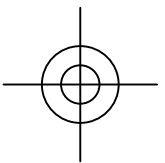
14-BIT ADC Board

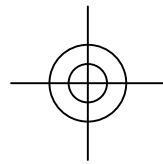
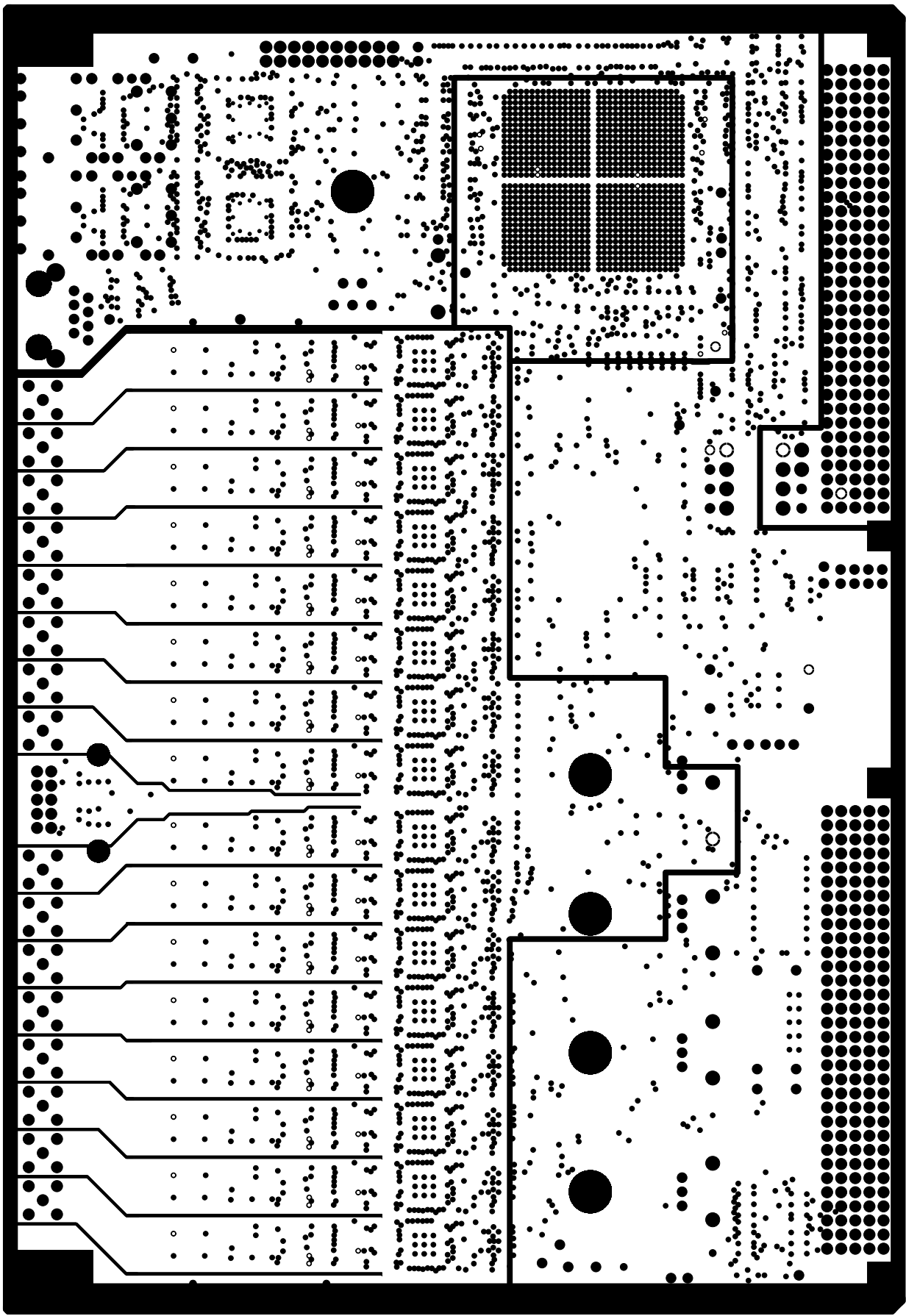
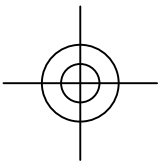
SCHEMATIC DRAWING: B-2605 Rev. LEMO
SPECIFICATION DRAWING: A-2606 Rev. LEMO
ASSEMBLY DRAWING: B-2607 Rev. LEMO

Jan. 21, 2015

University of Chicago
Enrico Fermi Institute
Electronics Development Group
Chicago, IL 60637
(773) 702-7801

SIGNAL_2 FILM4, LAYER_4





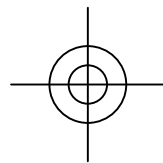
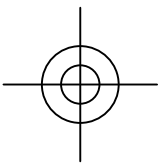
14-BIT ADC Board

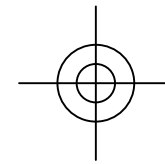
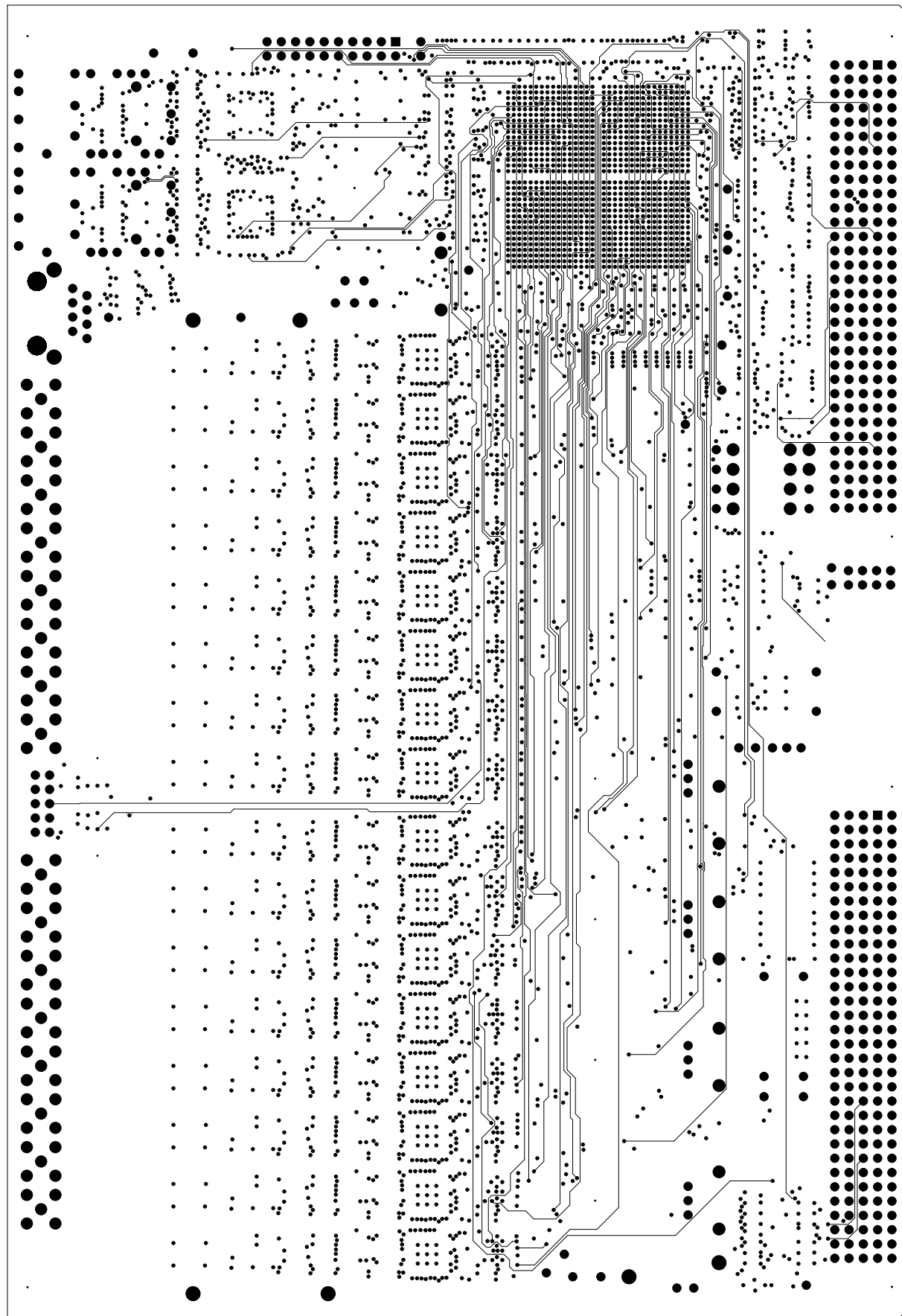
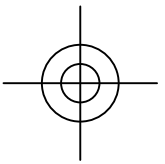
SCHEMATIC DRAWING: B-2605 Rev. LEMO
SPECIFICATION DRAWING: A-2606 Rev. LEMO
ASSEMBLY DRAWING: B-2607 Rev. LEMO

Jan. 21, 2015

University of Chicago
Enrico Fermi Institute
Electronics Development Group
Chicago, IL 60637
(773) 702-7801

POWER: +3.3V_PLL, +5Van, +12V, +12Vin, FILM5, LAYER_5





14-BIT ADC Board

SCHEMATIC DRAWING: B-2605 Rev. LEMO

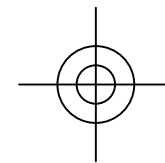
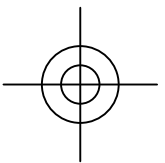
SPECIFICATION DRAWING: A-2606 Rev. LEMO

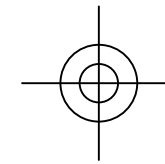
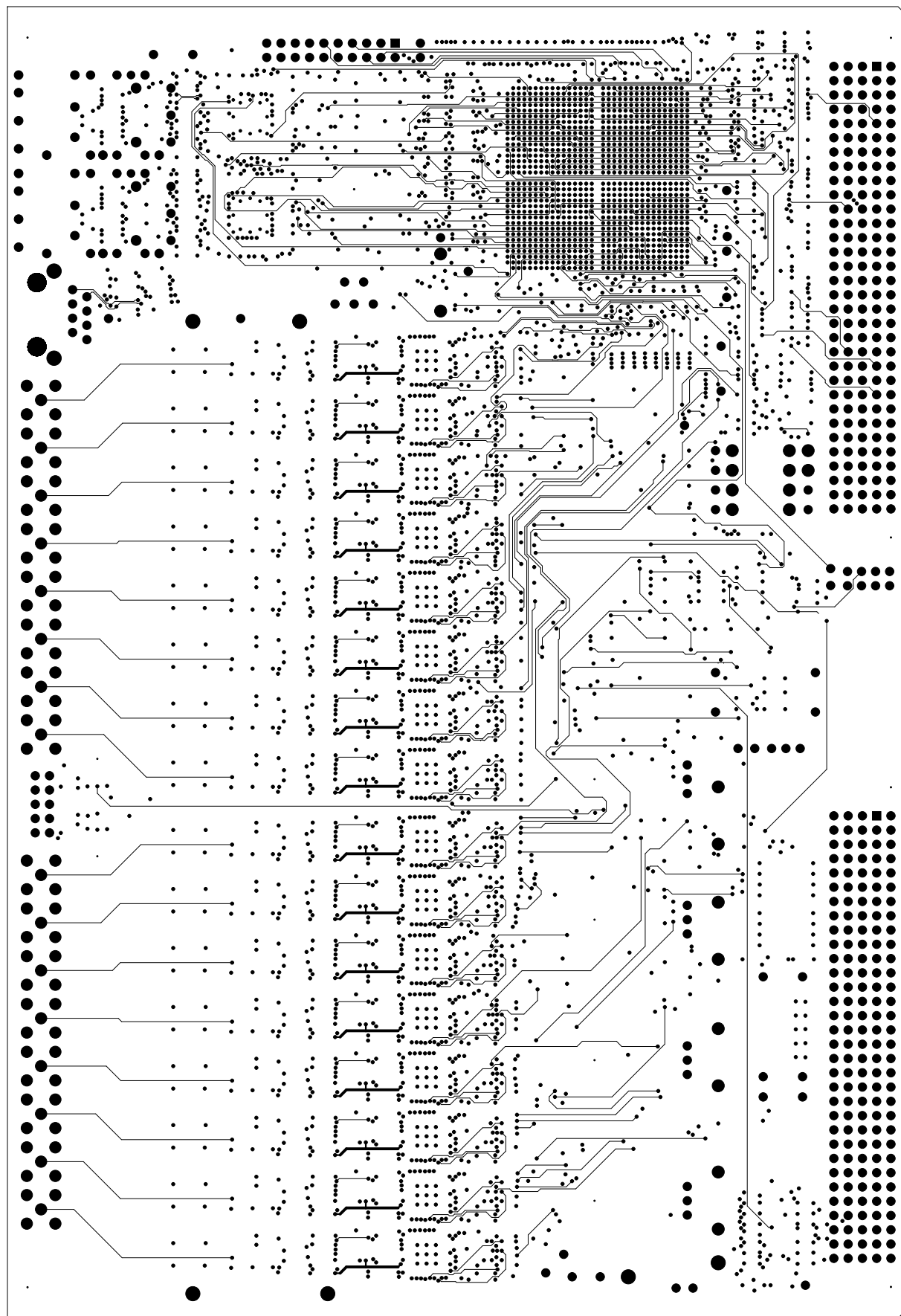
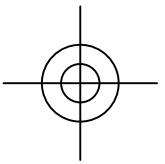
ASSEMBLY DRAWING: B-2607 Rev. LEMO

Jan. 21, 2015

University of Chicago
Enrico Fermi Institute
Electronics Development Group
Chicago, IL 60637
(773) 702-7801

SIGNAL_8 FILM6, LAYER_6





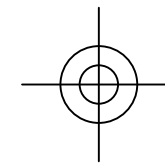
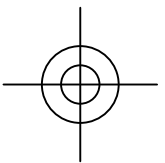
14-BIT ADC Board

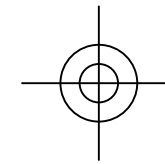
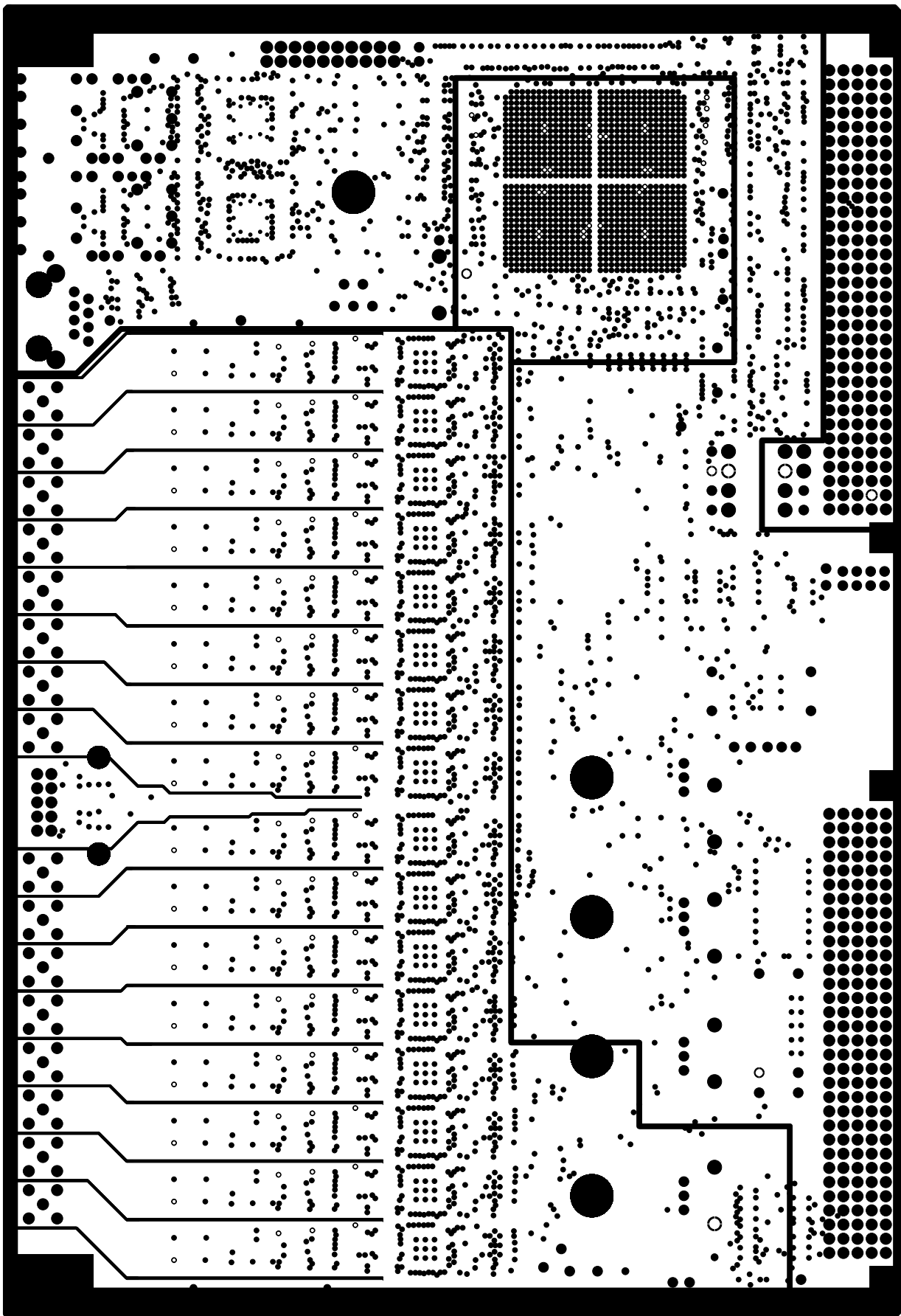
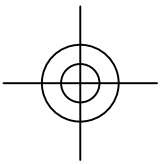
SCHEMATIC DRAWING: B-2605 Rev. LEMO
SPECIFICATION DRAWING: A-2606 Rev. LEMO
ASSEMBLY DRAWING: B-2607 Rev. LEMO

Jan. 21, 2015

University of Chicago
Enrico Fermi Institute
Electronics Development Group
Chicago, IL 60637
(773) 702-7801

SIGNAL_3 FILM7, LAYER_7





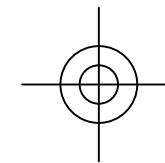
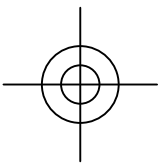
14-BIT ADC Board

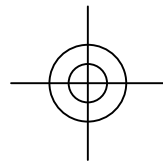
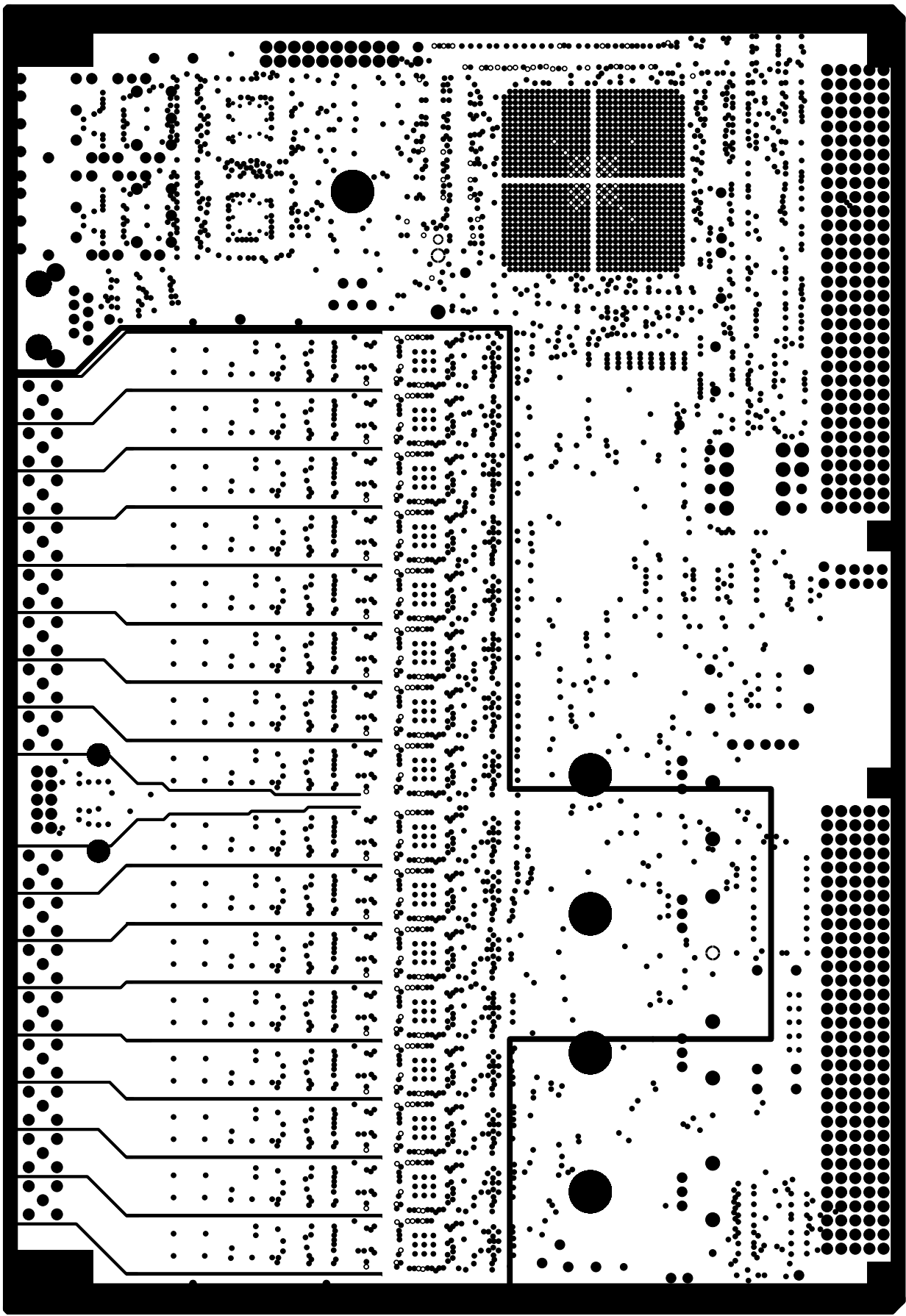
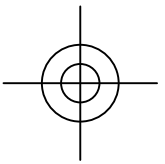
SCHEMATIC DRAWING: B-2605 Rev. LEMO
SPECIFICATION DRAWING: A-2606 Rev. LEMO
ASSEMBLY DRAWING: B-2607 Rev. LEMO

Jan. 21, 2015

University of Chicago
Enrico Fermi Institute
Electronics Development Group
Chicago, IL 60637
(773) 702-7801

POWER: +1.2V_PLL, -12V, -12Vin, -5V_{an}, FILM8, LAYER_8





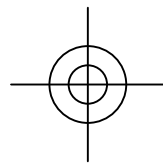
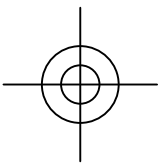
14-BIT ADC Board

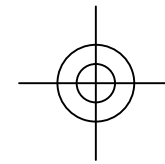
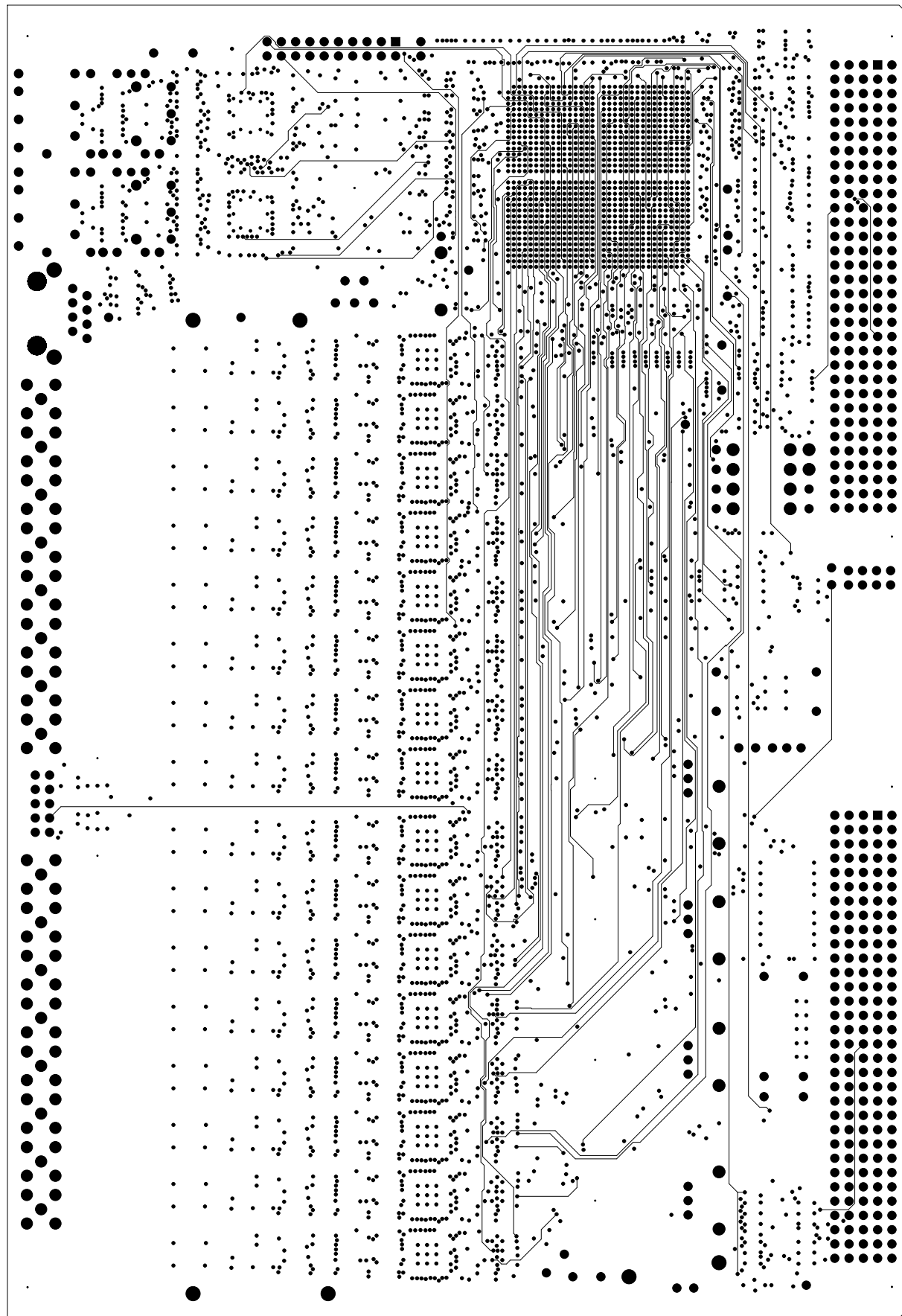
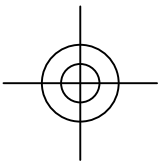
SCHEMATIC DRAWING: B-2605 Rev. LEMO
SPECIFICATION DRAWING: A-2606 Rev. LEMO
ASSEMBLY DRAWING: B-2607 Rev. LEMO

Jan. 21, 2015

University of Chicago
Enrico Fermi Institute
Electronics Development Group
Chicago, IL 60637
(773) 702-7801

POWER: +1.2V, +1.8V, FILM9, LAYER_9





14-BIT ADC Board

SCHEMATIC DRAWING: B-2605 Rev. LEMO

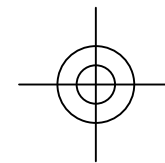
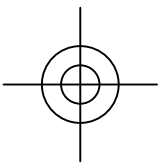
SPECIFICATION DRAWING: A-2606 Rev. LEMO

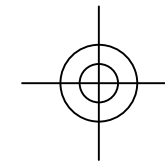
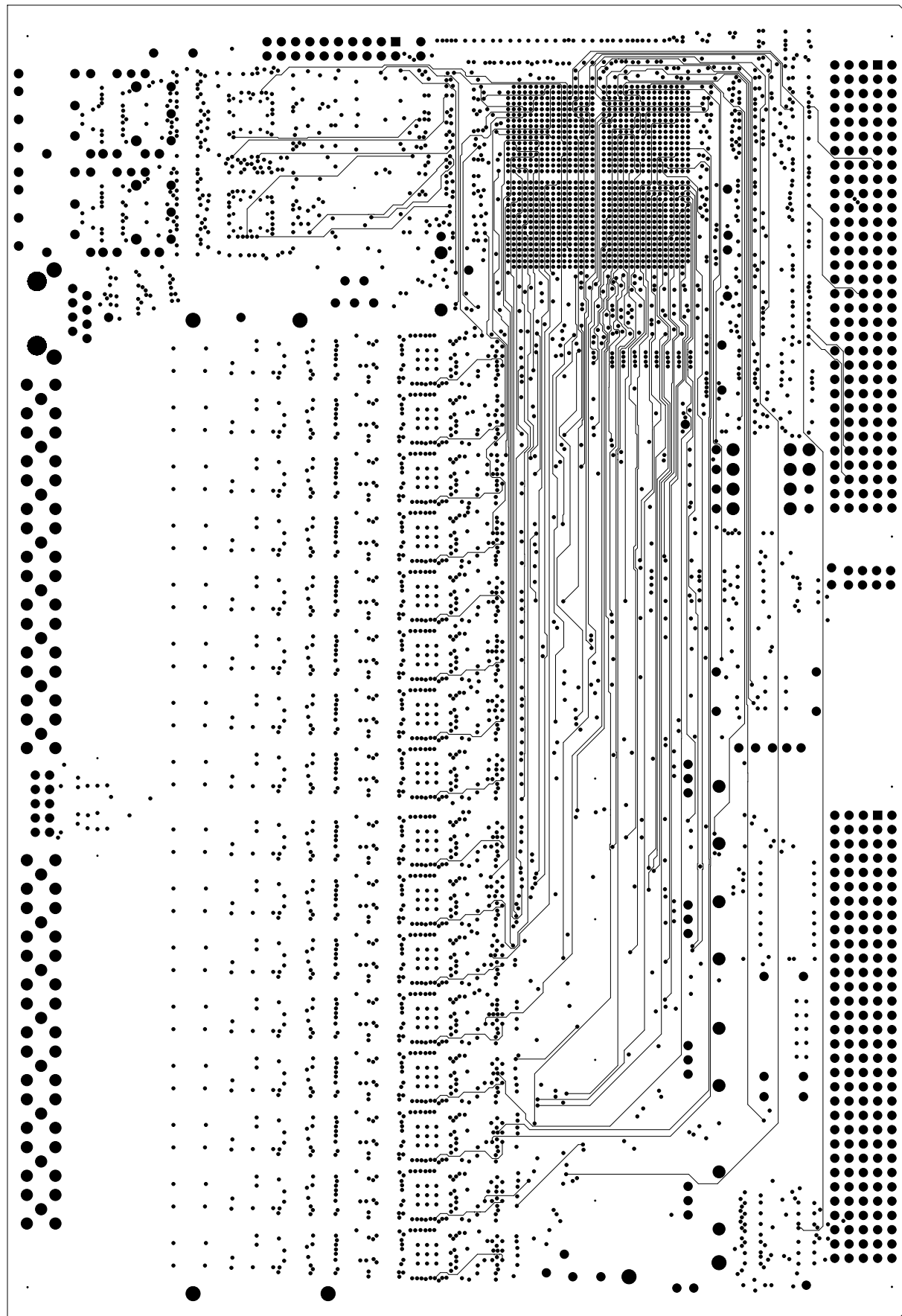
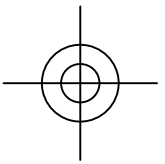
ASSEMBLY DRAWING: B-2607 Rev. LEMO

Jan. 21, 2015

University of Chicago
Enrico Fermi Institute
Electronics Development Group
Chicago, IL 60637
(773) 702-7801

SIGNAL_9 FILM10, LAYER_10





14-BIT ADC Board

SCHEMATIC DRAWING: B-2605 Rev. LEMO

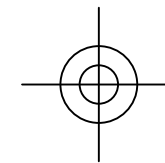
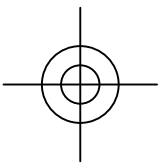
SPECIFICATION DRAWING: A-2606 Rev. LEMO

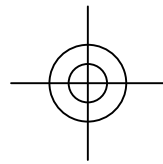
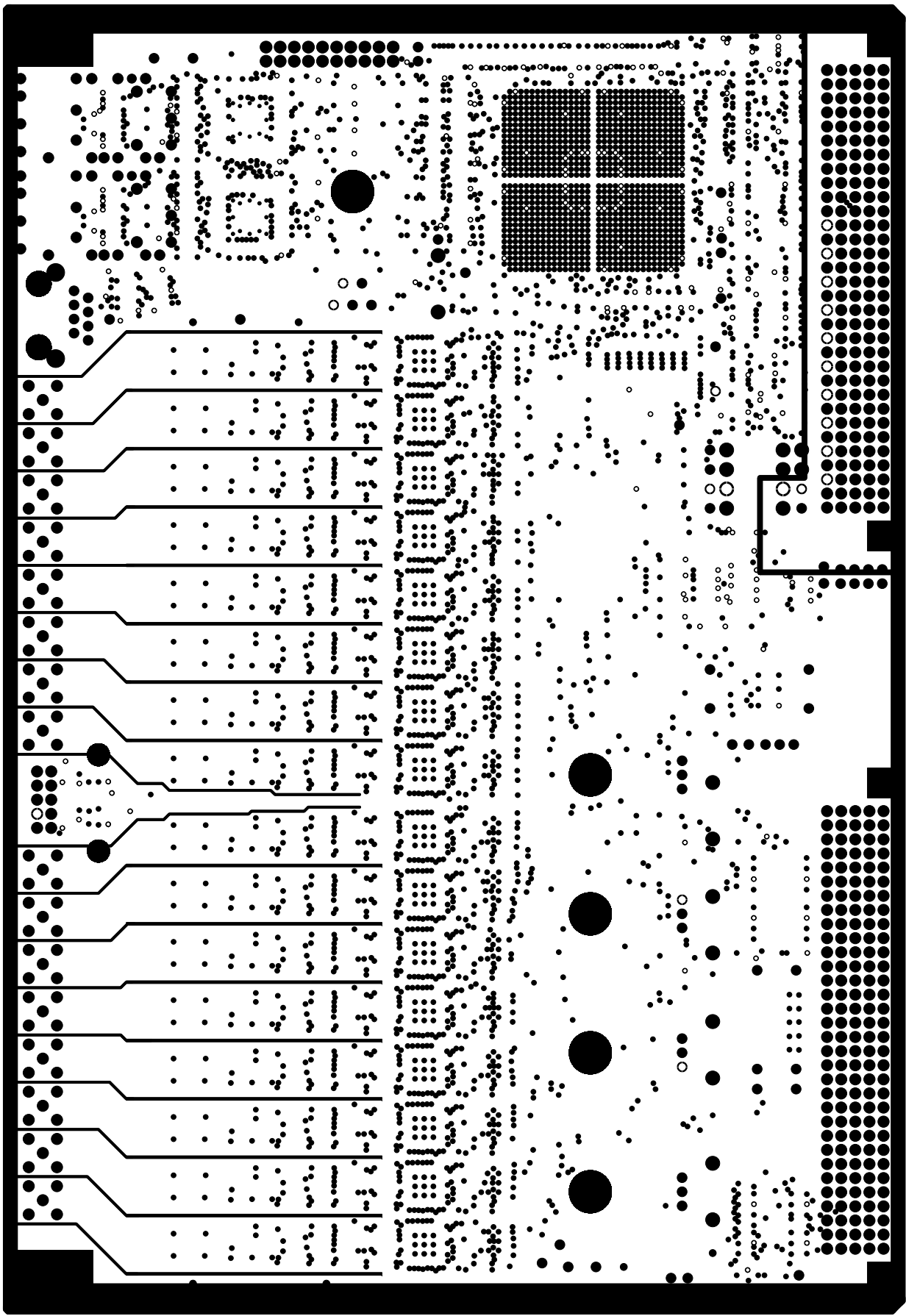
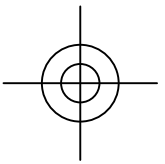
ASSEMBLY DRAWING: B-2607 Rev. LEMO

Jan. 21, 2015

University of Chicago
Enrico Fermi Institute
Electronics Development Group
Chicago, IL 60637
(773) 702-7801

SIGNAL_4 FILM11, LAYER_11





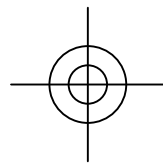
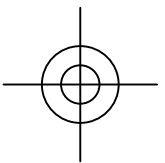
14-BIT ADC Board

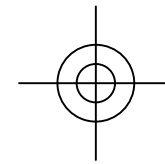
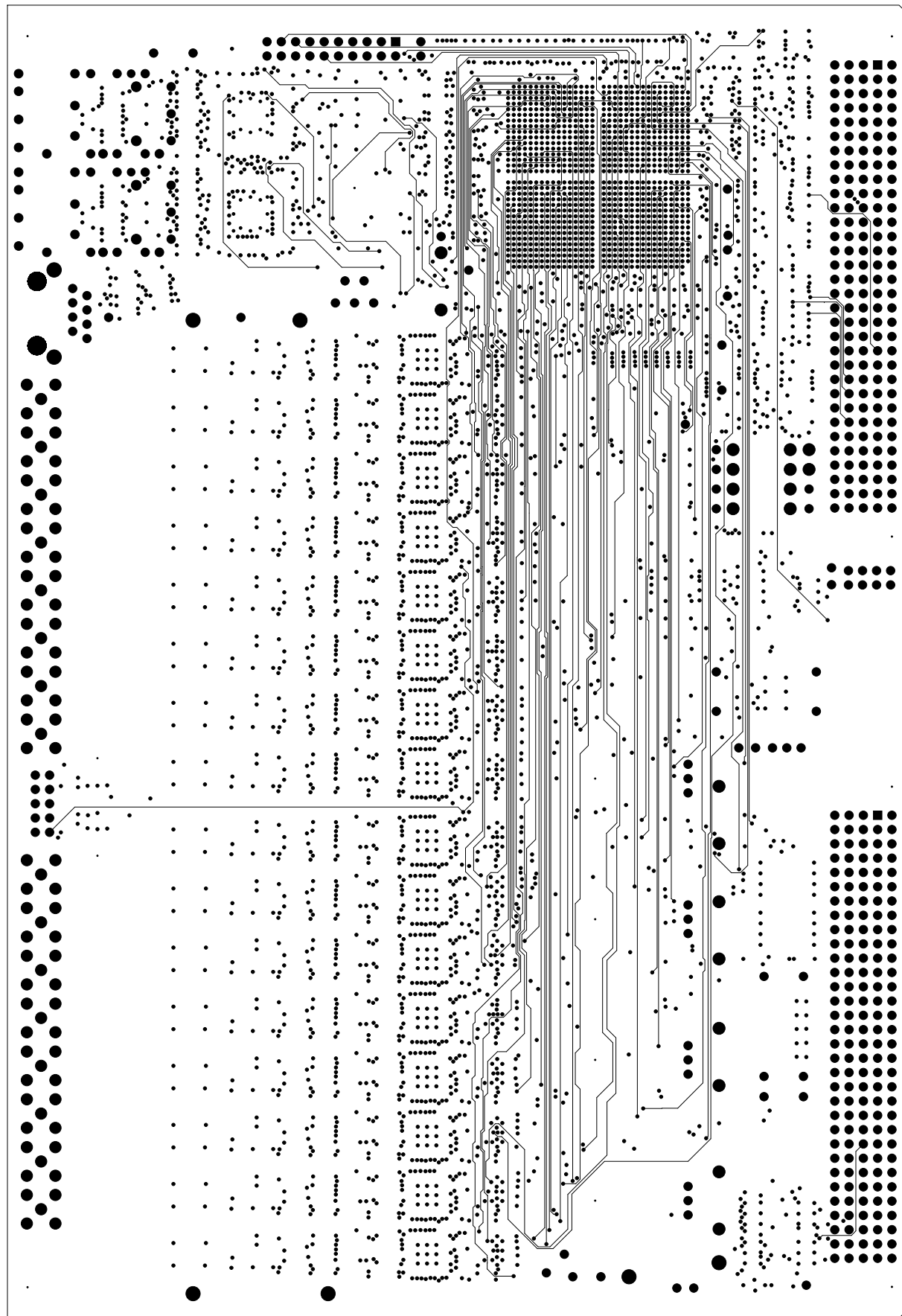
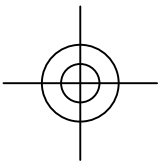
SCHEMATIC DRAWING: B-2605 Rev. LEMO
SPECIFICATION DRAWING: A-2606 Rev. LEMO
ASSEMBLY DRAWING: B-2607 Rev. LEMO

Jan. 21, 2015

University of Chicago
Enrico Fermi Institute
Electronics Development Group
Chicago, IL 60637
(773) 702-7801

POWER: +3.3V, +3.3Vin FILM12, LAYER_12





14-BIT ADC Board

SCHEMATIC DRAWING: B-2605 Rev. LEMO

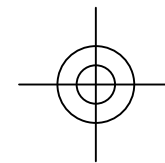
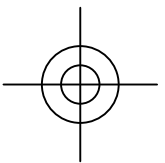
SPECIFICATION DRAWING: A-2606 Rev. LEMO

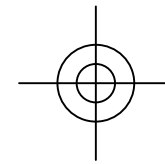
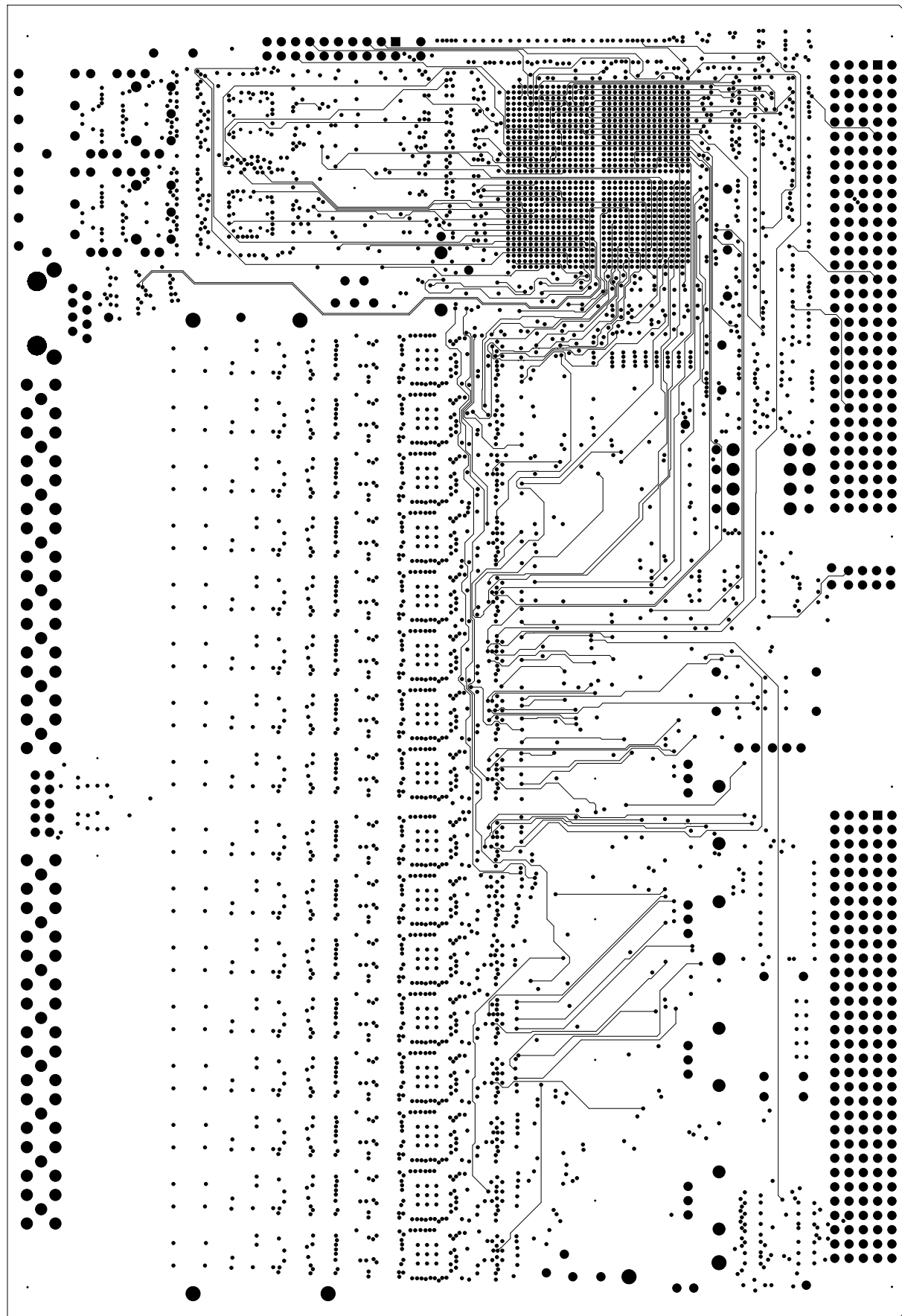
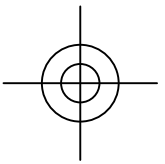
ASSEMBLY DRAWING: B-2607 Rev. LEMO

Jan. 21, 2015

University of Chicago
Enrico Fermi Institute
Electronics Development Group
Chicago, IL 60637
(773) 702-7801

SIGNAL_10 FILM13, LAYER_13





14-BIT ADC Board

SCHEMATIC DRAWING: B-2605 Rev. LEMO

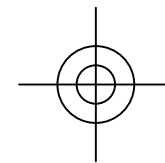
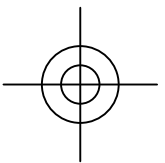
SPECIFICATION DRAWING: A-2606 Rev. LEMO

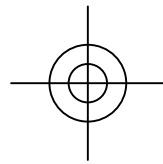
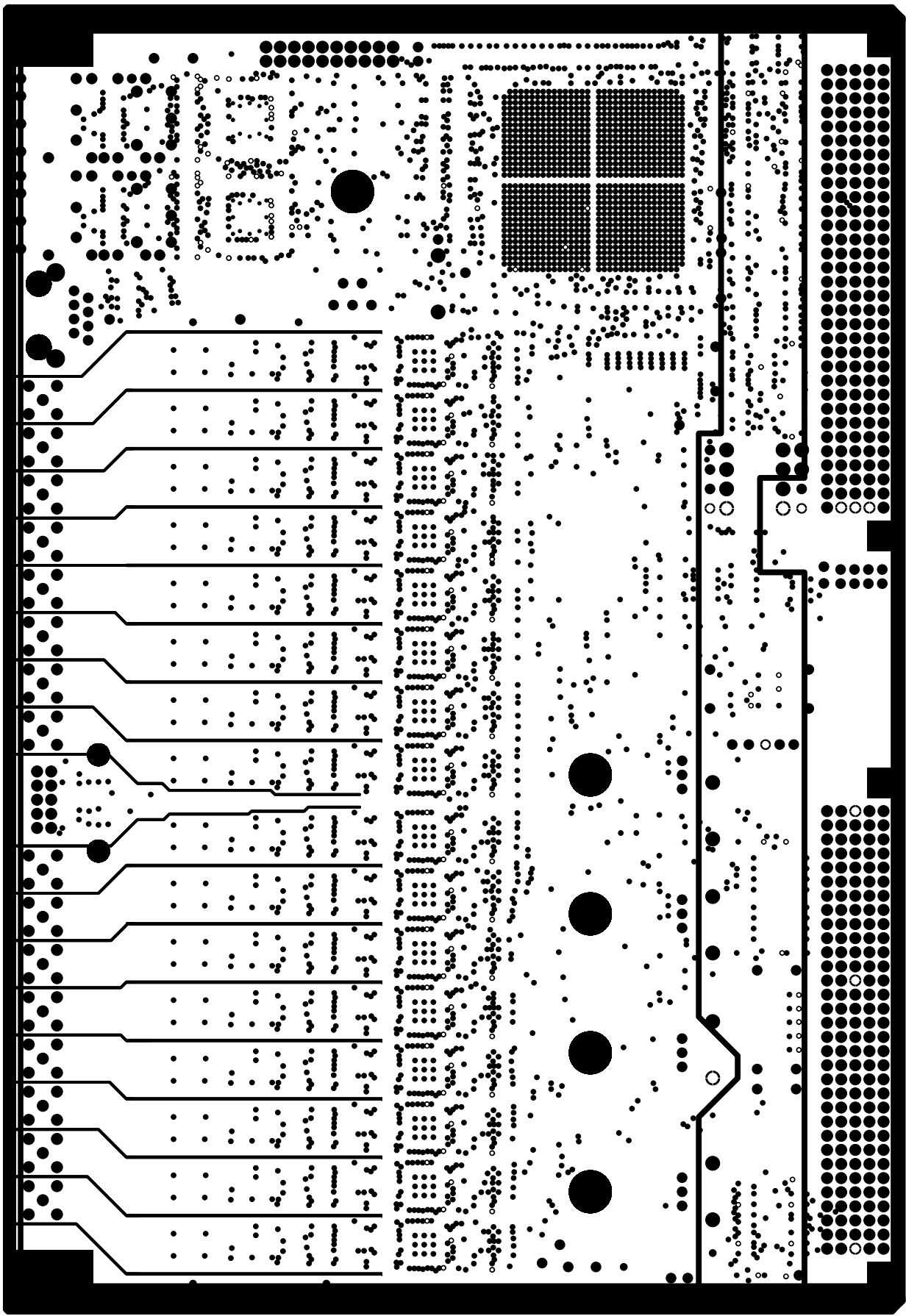
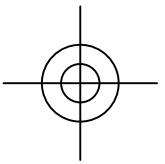
ASSEMBLY DRAWING: B-2607 Rev. LEMO

Jan. 21, 2015

University of Chicago
Enrico Fermi Institute
Electronics Development Group
Chicago, IL 60637
(773) 702-7801

SIGNAL_5 FILM14, LAYER_14





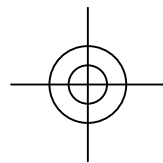
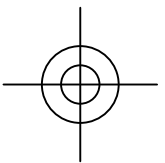
14-BIT ADC Board

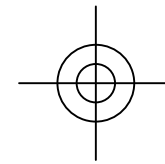
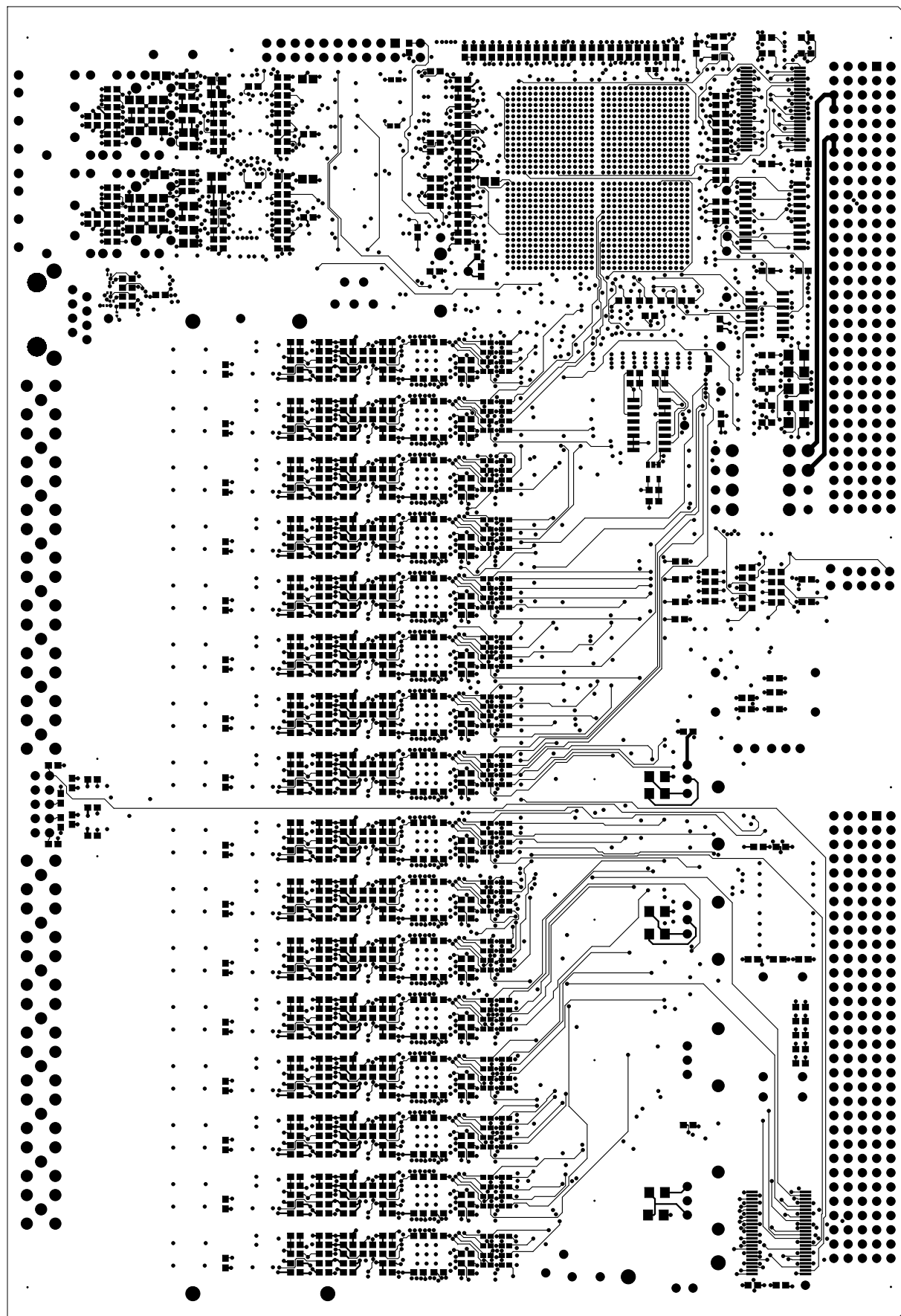
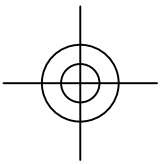
SCHEMATIC DRAWING: B-2605 Rev. LEMO
SPECIFICATION DRAWING: A-2606 Rev. LEMO
ASSEMBLY DRAWING: B-2607 Rev. LEMO

Jan. 21, 2015

University of Chicago
Enrico Fermi Institute
Electronics Development Group
Chicago, IL 60637
(773) 702-7801

POWER: +5V, VCC, +2.5V, FILM15, LAYER_15





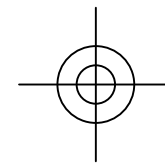
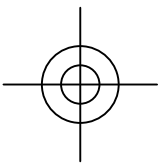
14-BIT ADC Board

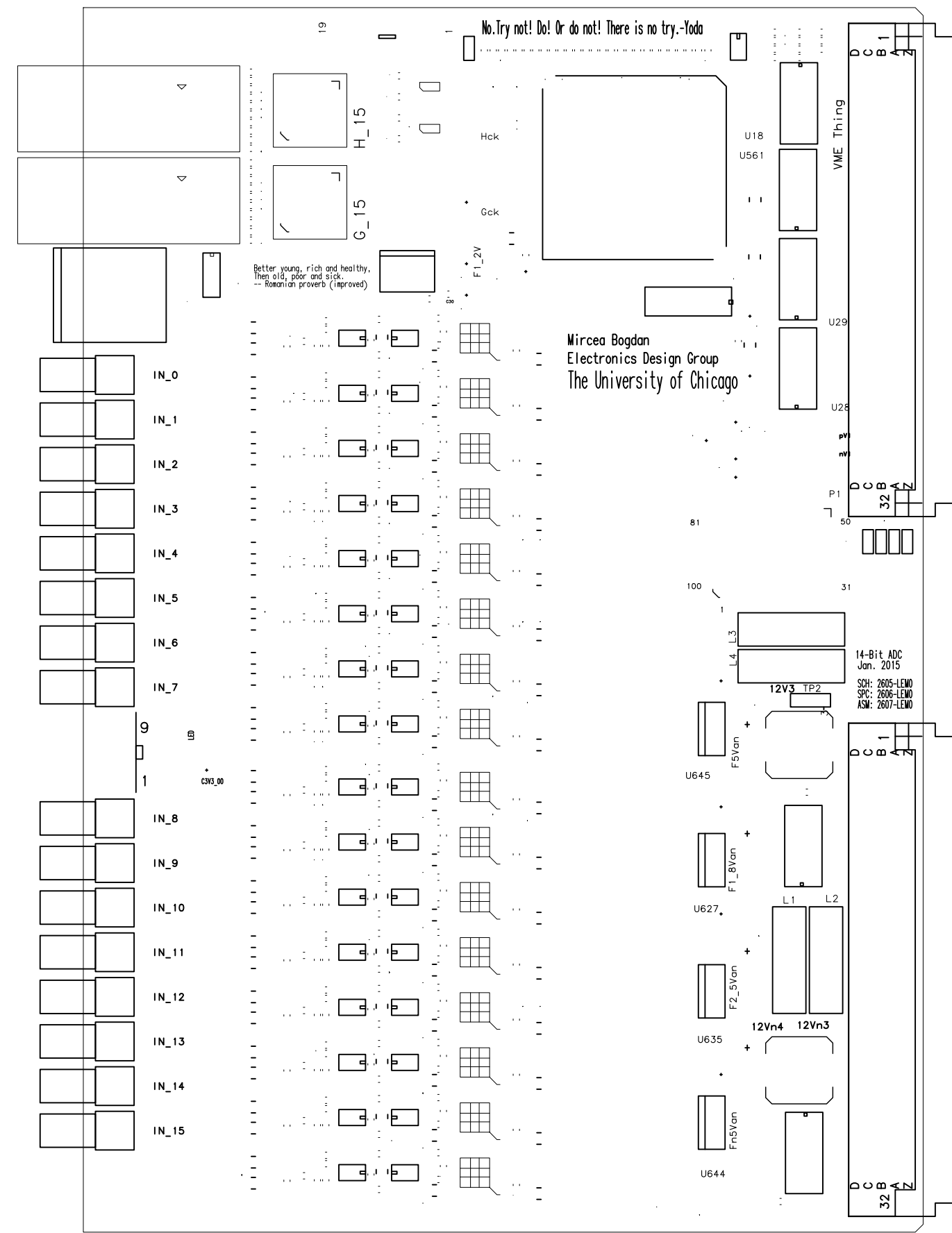
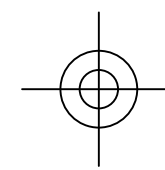
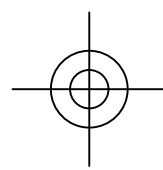
SCHEMATIC DRAWING: B-2605 Rev. LEMO
SPECIFICATION DRAWING: A-2606 Rev. LEMO
ASSEMBLY DRAWING: B-2607 Rev. LEMO

Jan. 21, 2015

University of Chicago
Enrico Fermi Institute
Electronics Development Group
Chicago, IL 60637
(773) 702-7801

Bottom, SIGNAL_6, FILM12, LAYER_16





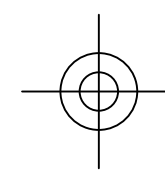
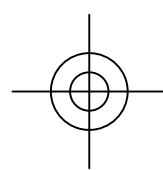
14-BIT ADC Board

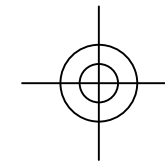
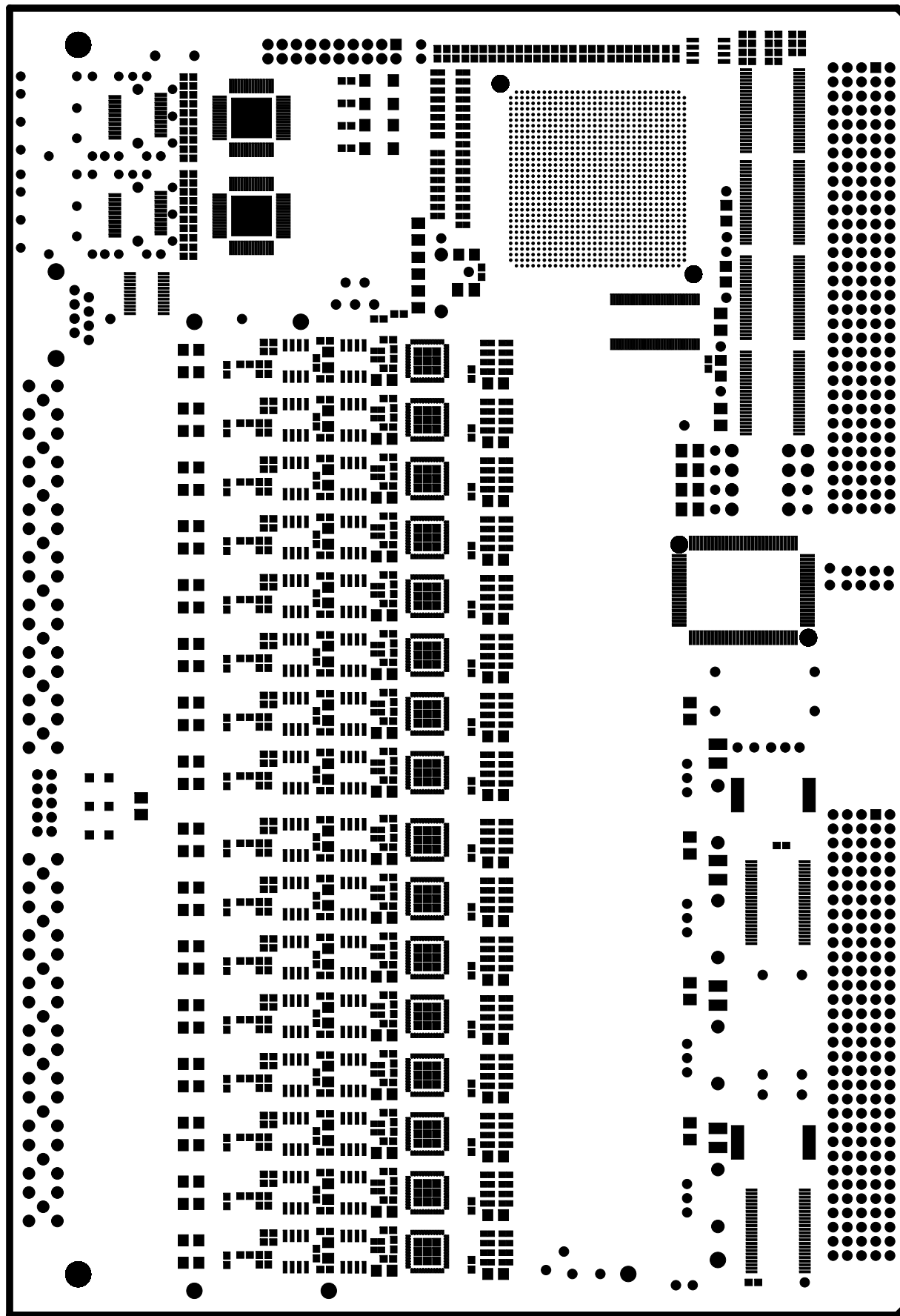
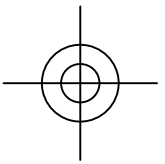
SCHEMATIC DRAWING: B-2605 Rev. LEMO
SPECIFICATION DRAWING: A-2606 Rev. LEMO
ASSEMBLY DRAWING: B-2607 Rev. LEMO

Jan. 21, 2015

University of Chicago
Enrico Fermi Institute
Electronics Development Group
Chicago, IL 60637
(773) 702-7801

COMPONENT SIDE SILKSCREEN FILM17





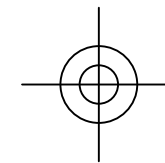
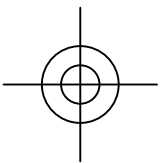
14-BIT ADC Board

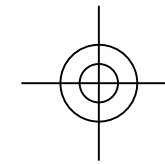
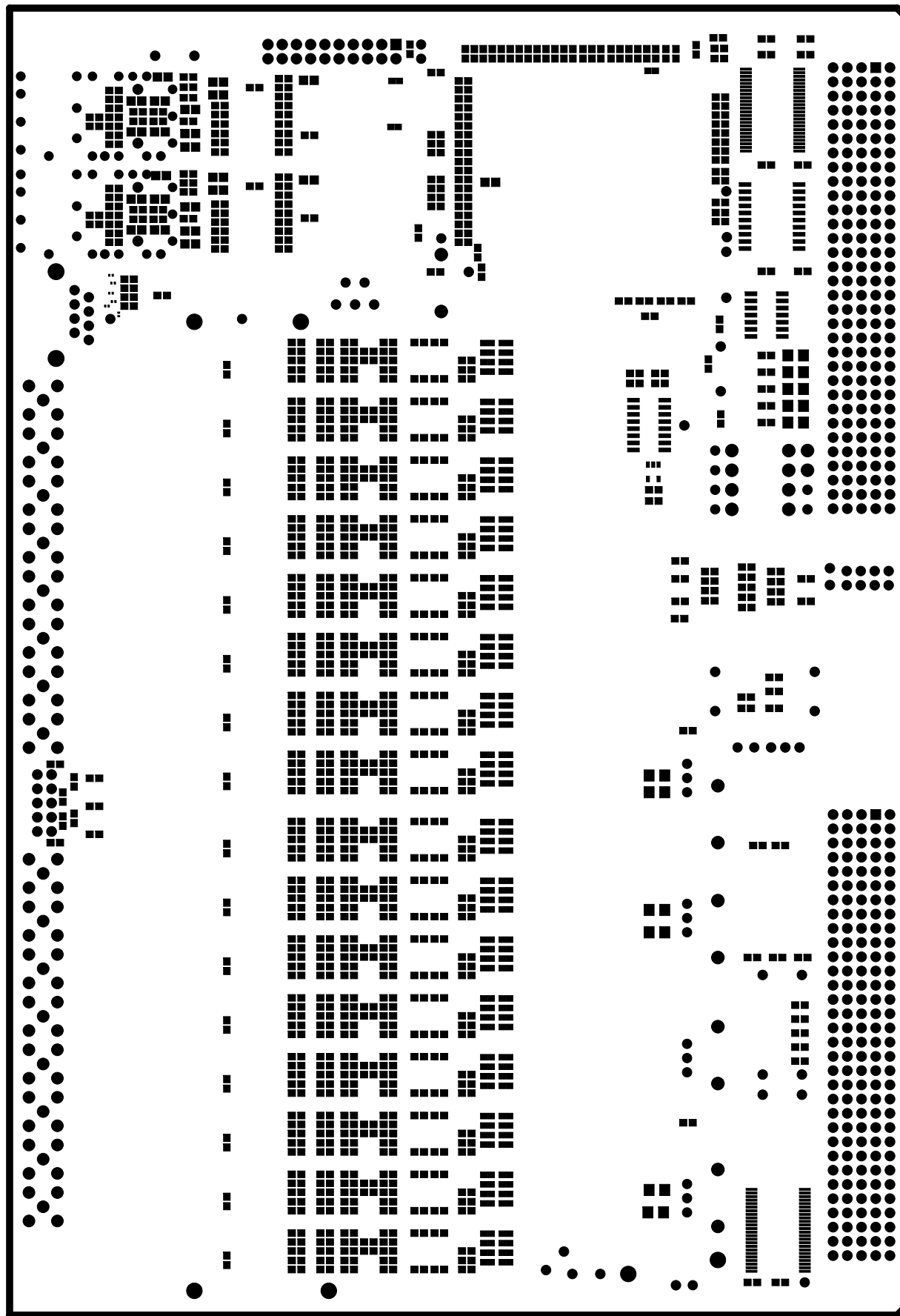
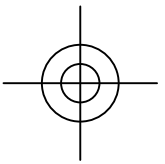
SCHEMATIC DRAWING: B-2605 Rev. LEMO
SPECIFICATION DRAWING: A-2606 Rev. LEMO
ASSEMBLY DRAWING: B-2607 Rev. LEMO

Jan. 21, 2015

University of Chicago
Enrico Fermi Institute
Electronics Development Group
Chicago, IL 60637
(773) 702-7801

COMPONENT SIDE SOLDERMASK FILM19





14-BIT ADC Board

SCHEMATIC DRAWING: B-2605 Rev. LEMO

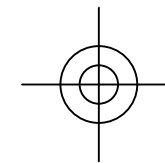
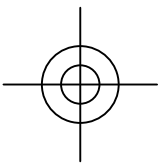
SPECIFICATION DRAWING: A-2606 Rev. LEMO

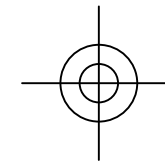
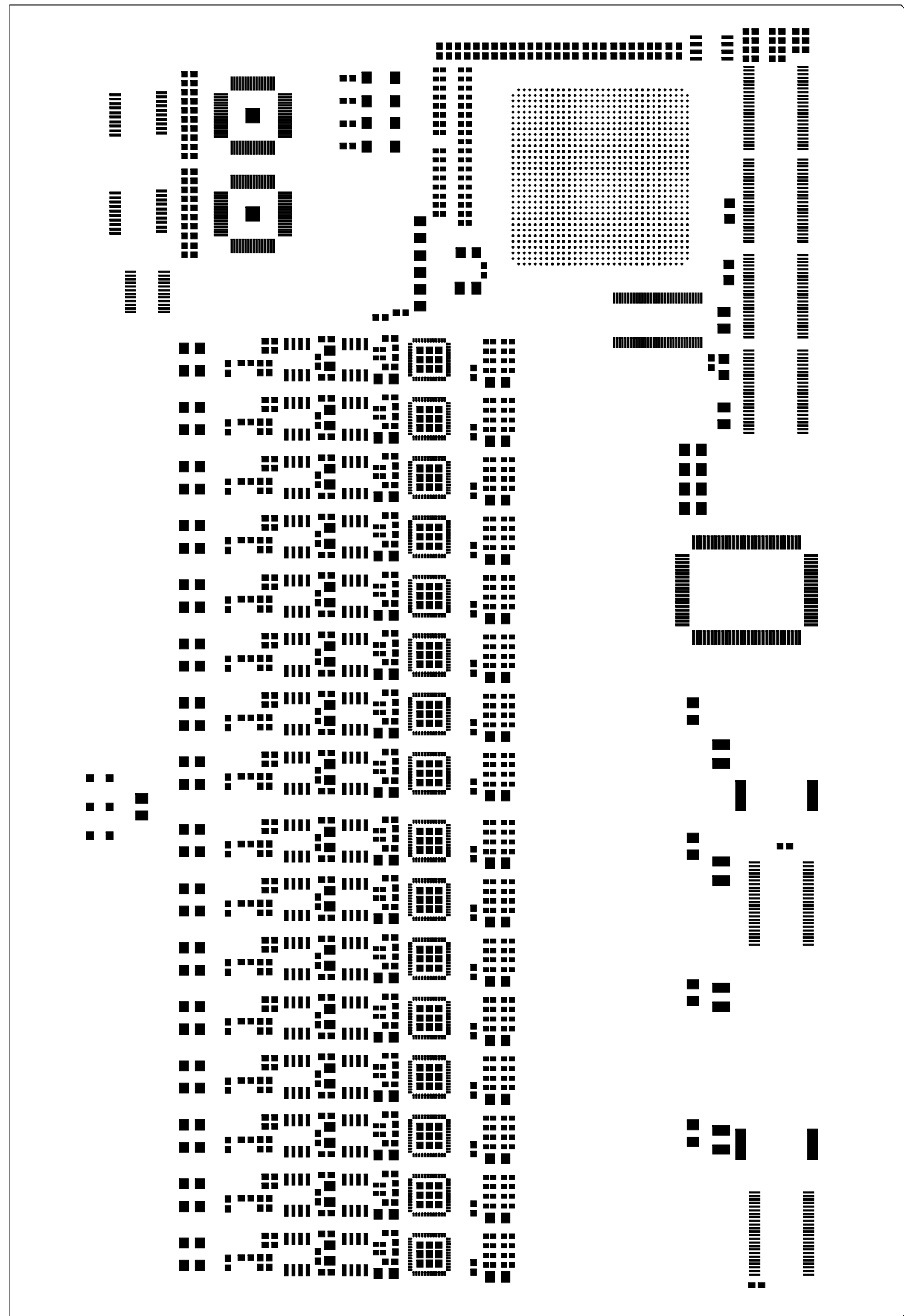
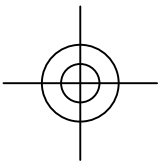
ASSEMBLY DRAWING: B-2607 Rev. LEMO

Jan. 21, 2015

University of Chicago
Enrico Fermi Institute
Electronics Development Group
Chicago, IL 60637
(773) 702-7801

SOLDER SIDE SOLDERMASK FILM20





14-BIT ADC Board

SCHEMATIC DRAWING: B-2605 Rev. LEMO

SPECIFICATION DRAWING: A-2606 Rev. LEMO

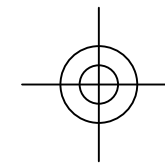
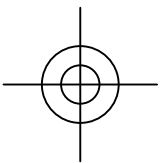
ASSEMBLY DRAWING: B-2607 Rev. LEMO

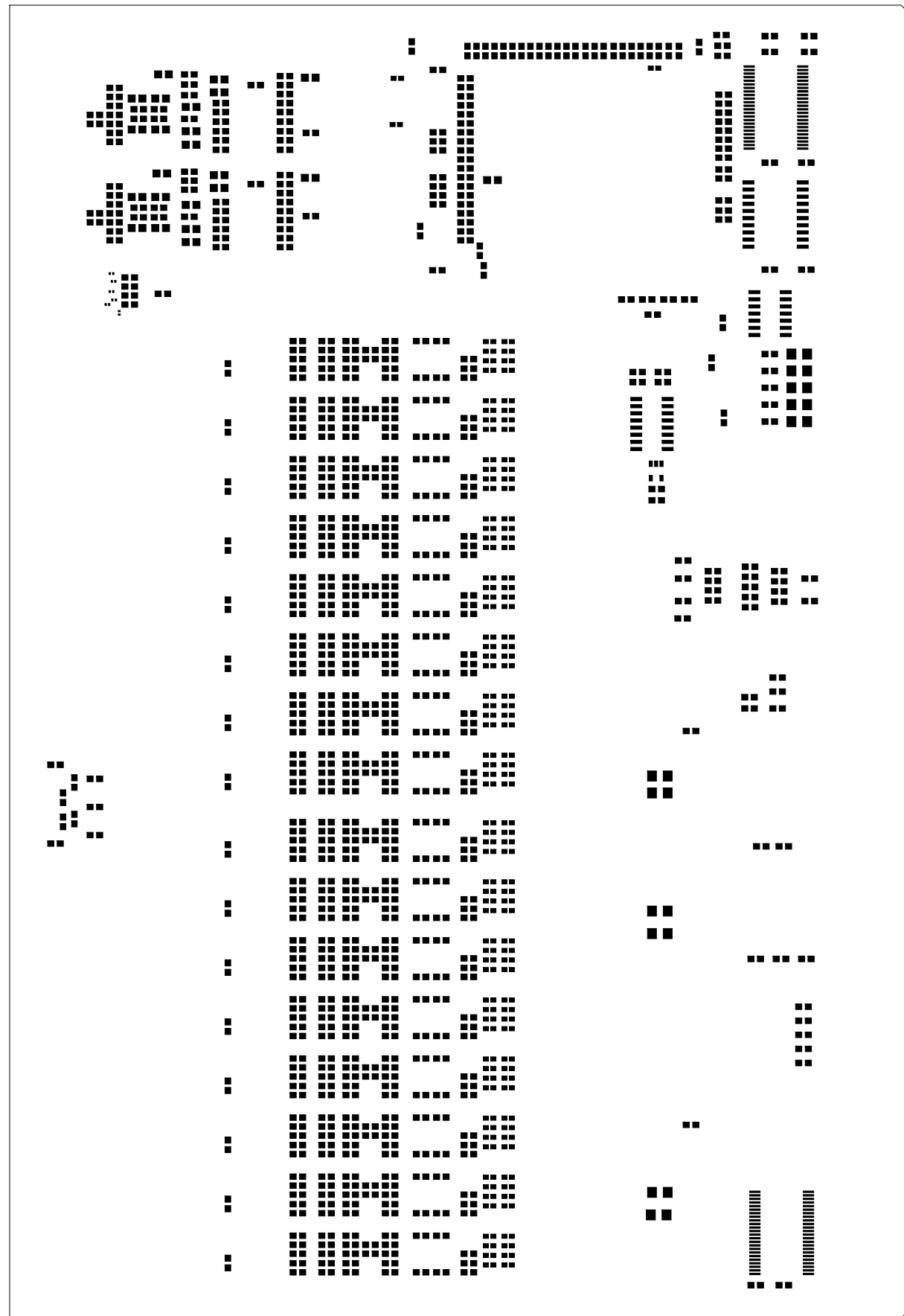
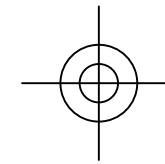
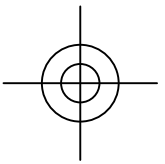
Jan. 21, 2015

University of Chicago
Enrico Fermi Institute
Electronics Development Group
Chicago, IL 60637
(773) 702-7801

PASTE MASK 1

FILM21





14-BIT ADC Board

SCHEMATIC DRAWING: B-2605 Rev. LEMO

SPECIFICATION DRAWING: A-2606 Rev. LEMO

ASSEMBLY DRAWING: B-2607 Rev. LEMO

Jan. 21, 2015

University of Chicago
 Enrico Fermi Institute
 Electronics Development Group
 Chicago, IL 60637
 (773) 702-7801

PASTE MASK 2

FILM22

