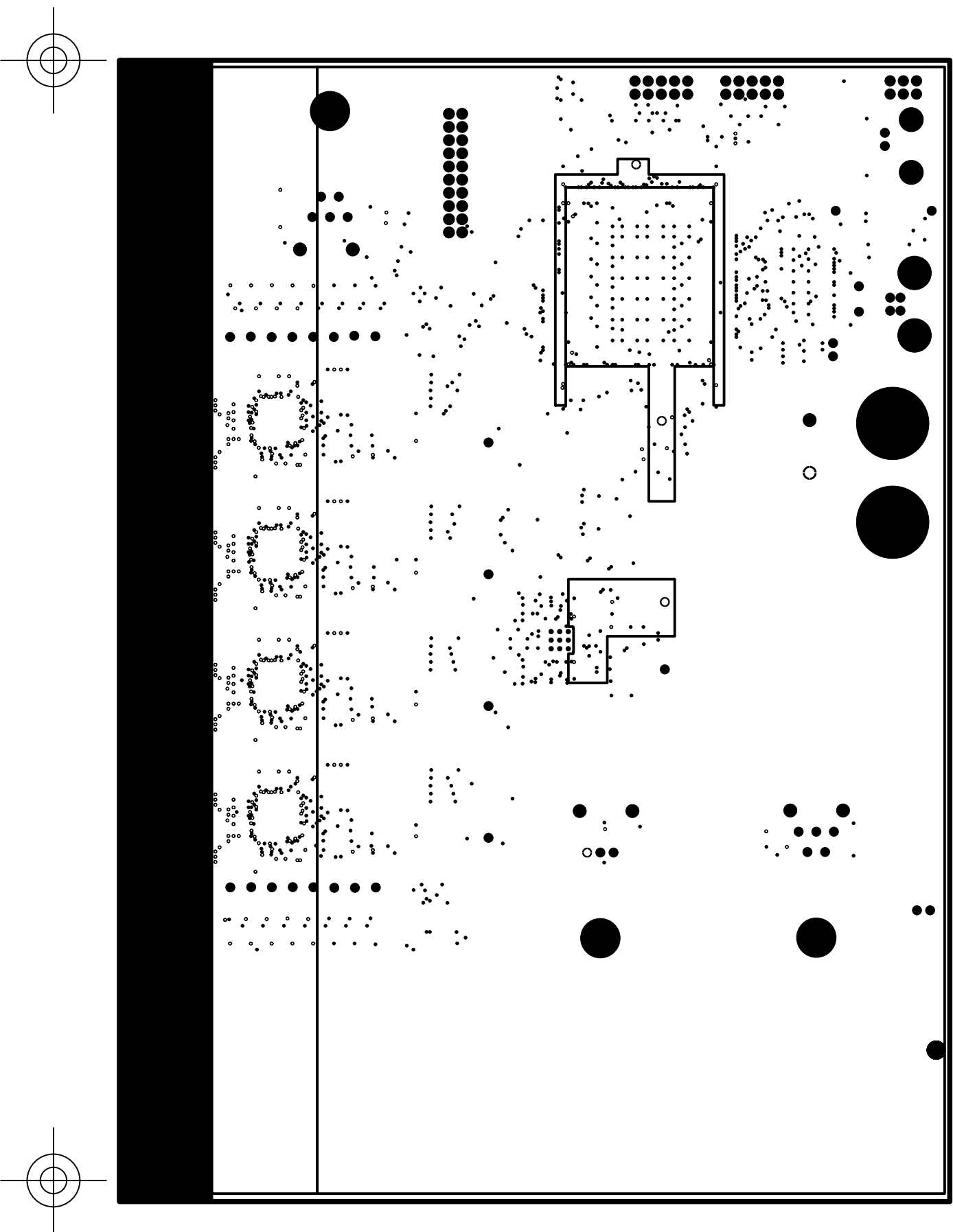


PSEC2 Flip Chip ADC Module

SCHEMATIC DRAWING: 2707 Rev.A
SPECIFICATION DRAWING: 2708 Rev.A
ASSEMBLY DRAWING: 2709 Rev.A
August, 2010

The University of Chicago
Enrico Fermi Institute
Electronics Development Group
Film1 - SIGNAL_1, Top

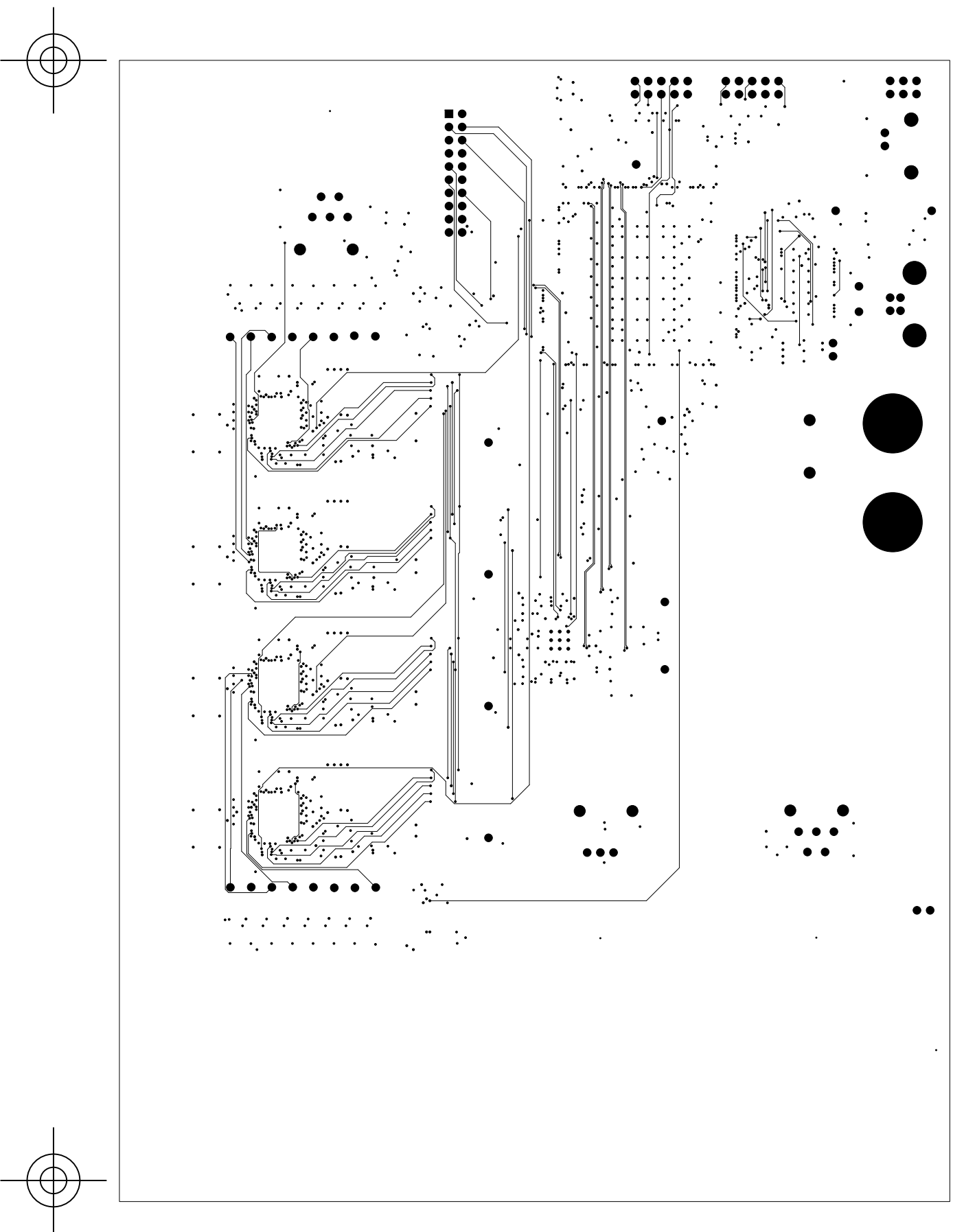


PSEC2 Flip Chip ADC Module

SCHEMATIC DRAWING: 2707 Rev.A
SPECIFICATION DRAWING: 2708 Rev.A
ASSEMBLY DRAWING: 2709 Rev.A
August, 2010

The University of Chicago
Enrico Fermi Institute
Electronics Development Group

Film2 - LOCAL_GROUND,VCC, +2.5V, +1.2V_PLL

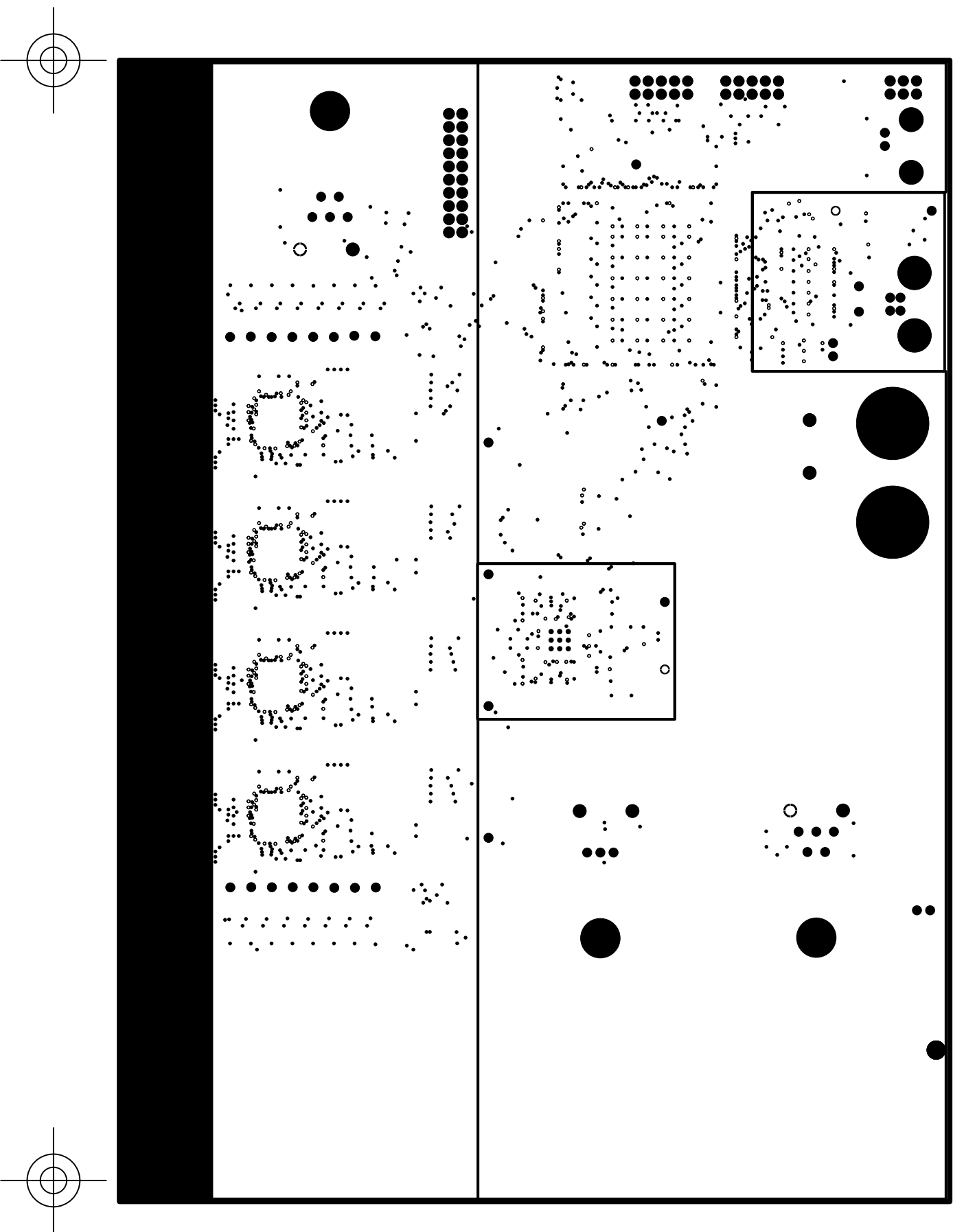


PSEC2 Flip Chip ADC Module

SCHEMATIC DRAWING: 2707 Rev.A
SPECIFICATION DRAWING: 2708 Rev.A
ASSEMBLY DRAWING: 2709 Rev.A
August, 2010

The University of Chicago
Enrico Fermi Institute
Electronics Development Group

Film3 - SIGNAL_2

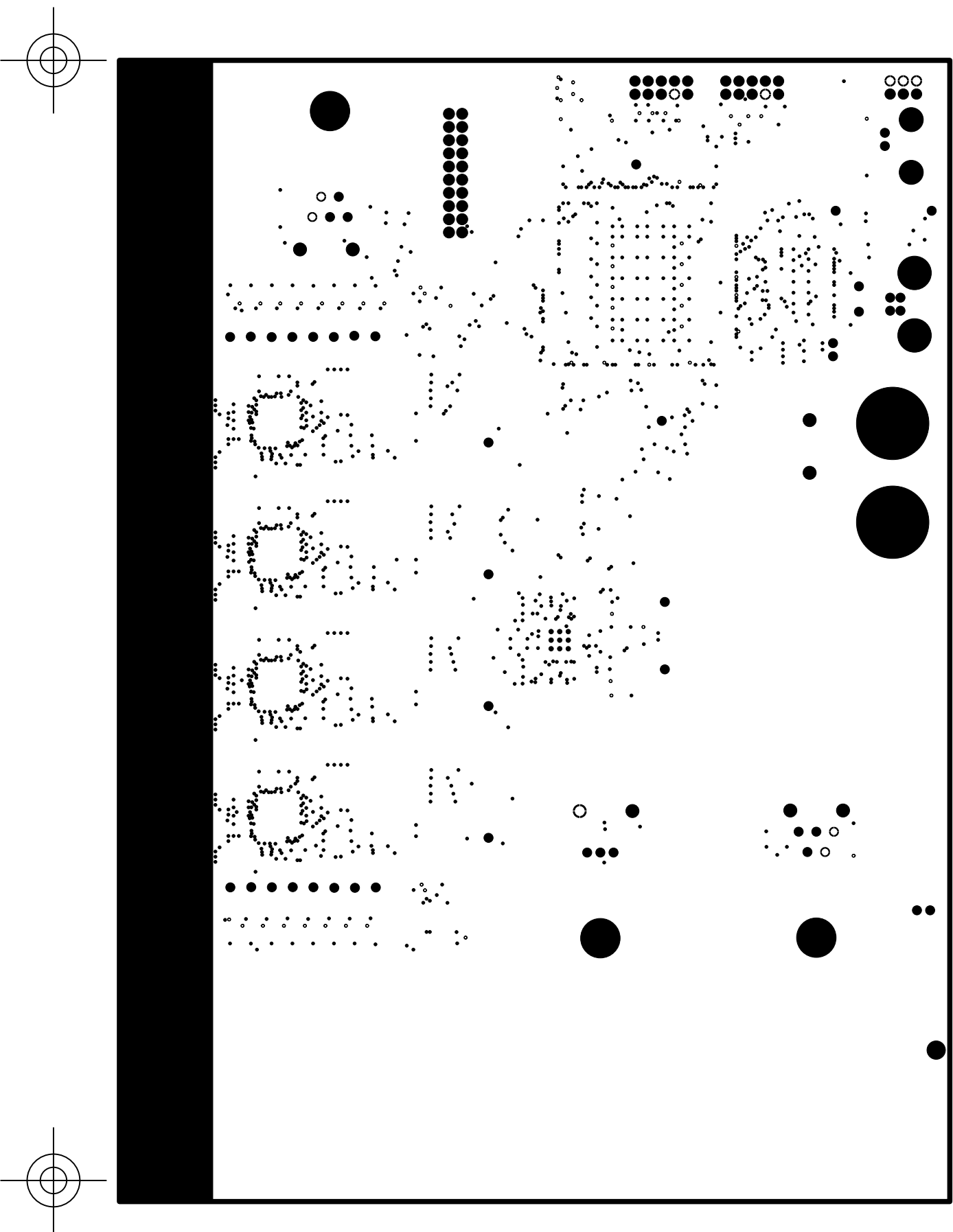


PSEC2 Flip Chip ADC Module

SCHEMATIC DRAWING: 2707 Rev.A
SPECIFICATION DRAWING: 2708 Rev.A
ASSEMBLY DRAWING: 2709 Rev.A
August, 2010

The University of Chicago
Enrico Fermi Institute
Electronics Development Group

Film4 - POWER_1: +1.2Va, +1.2V, +3.3VUSB

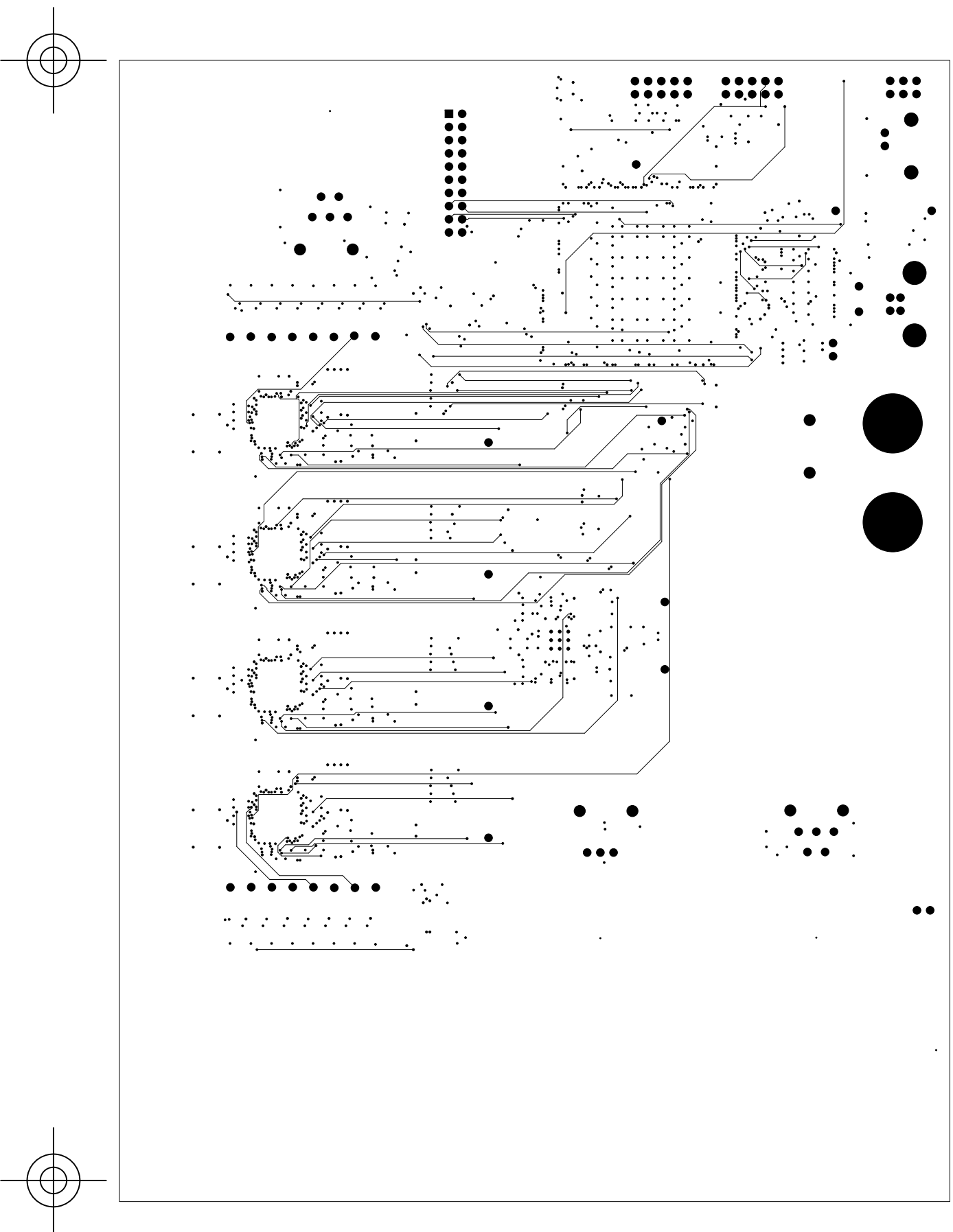


PSEC2 Flip Chip ADC Module

SCHEMATIC DRAWING: 2707 Rev.A
SPECIFICATION DRAWING: 2708 Rev.A
ASSEMBLY DRAWING: 2709 Rev.A
August, 2010

The University of Chicago
Enrico Fermi Institute
Electronics Development Group

Film5 - +3.0V

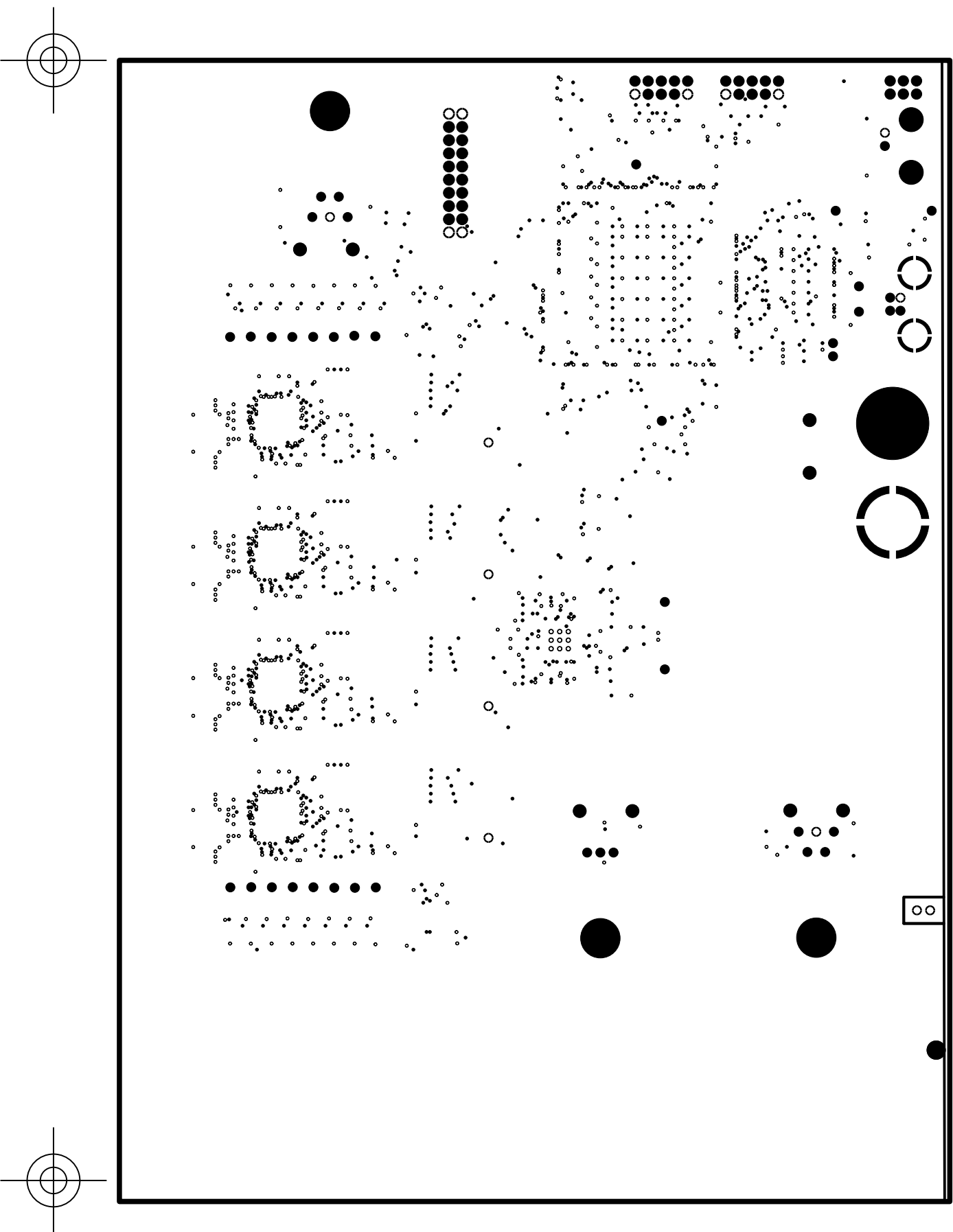


PSEC2 Flip Chip ADC Module

SCHEMATIC DRAWING: 2707 Rev.A
SPECIFICATION DRAWING: 2708 Rev.A
ASSEMBLY DRAWING: 2709 Rev.A
August, 2010

The University of Chicago
Enrico Fermi Institute
Electronics Development Group

Film6 - SIGNAL_3

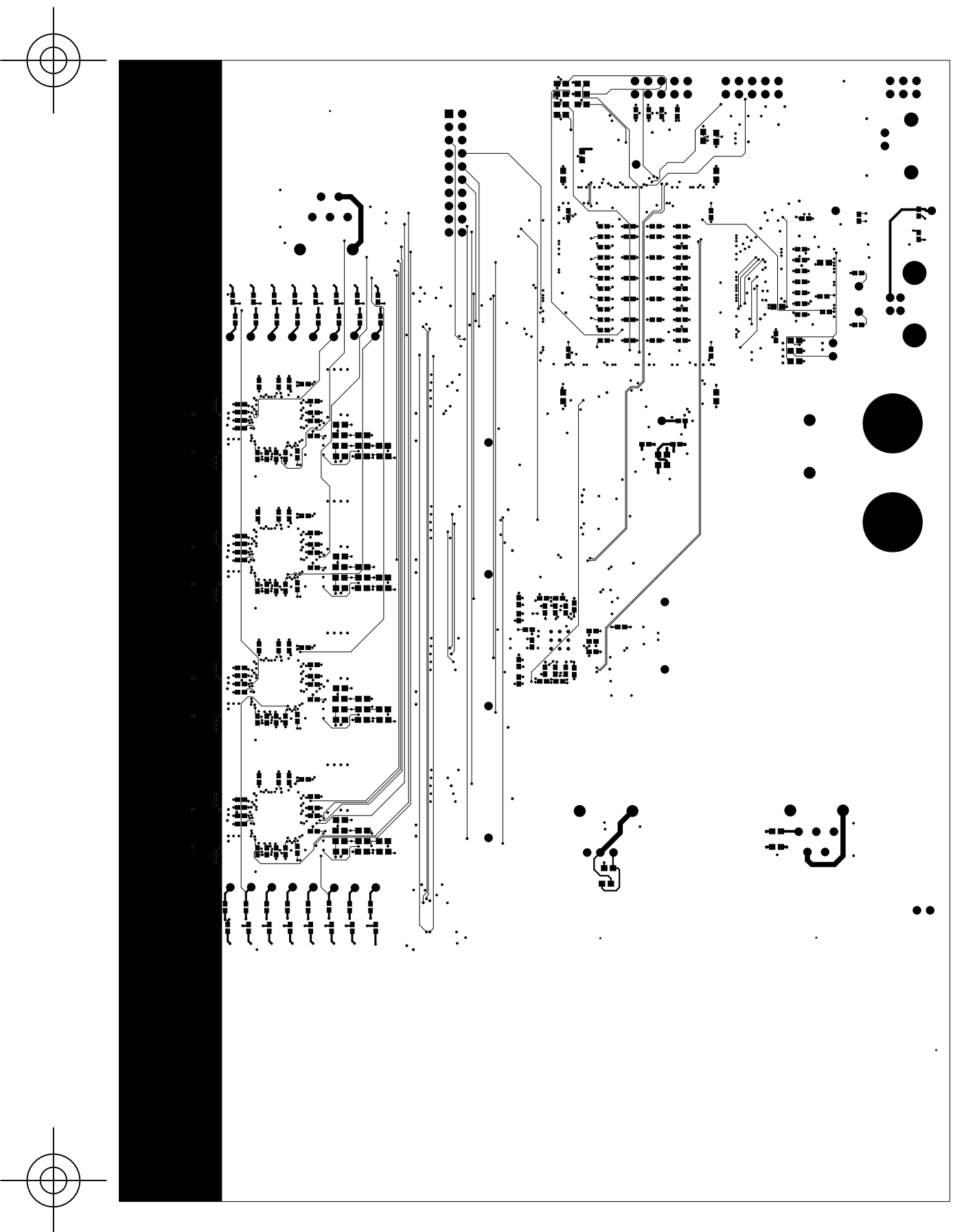


PSEC2 Flip Chip ADC Module

SCHEMATIC DRAWING: 2707 Rev.A
SPECIFICATION DRAWING: 2708 Rev.A
ASSEMBLY DRAWING: 2709 Rev.A
August, 2010

The University of Chicago
Enrico Fermi Institute
Electronics Development Group

Film7 - GROUND

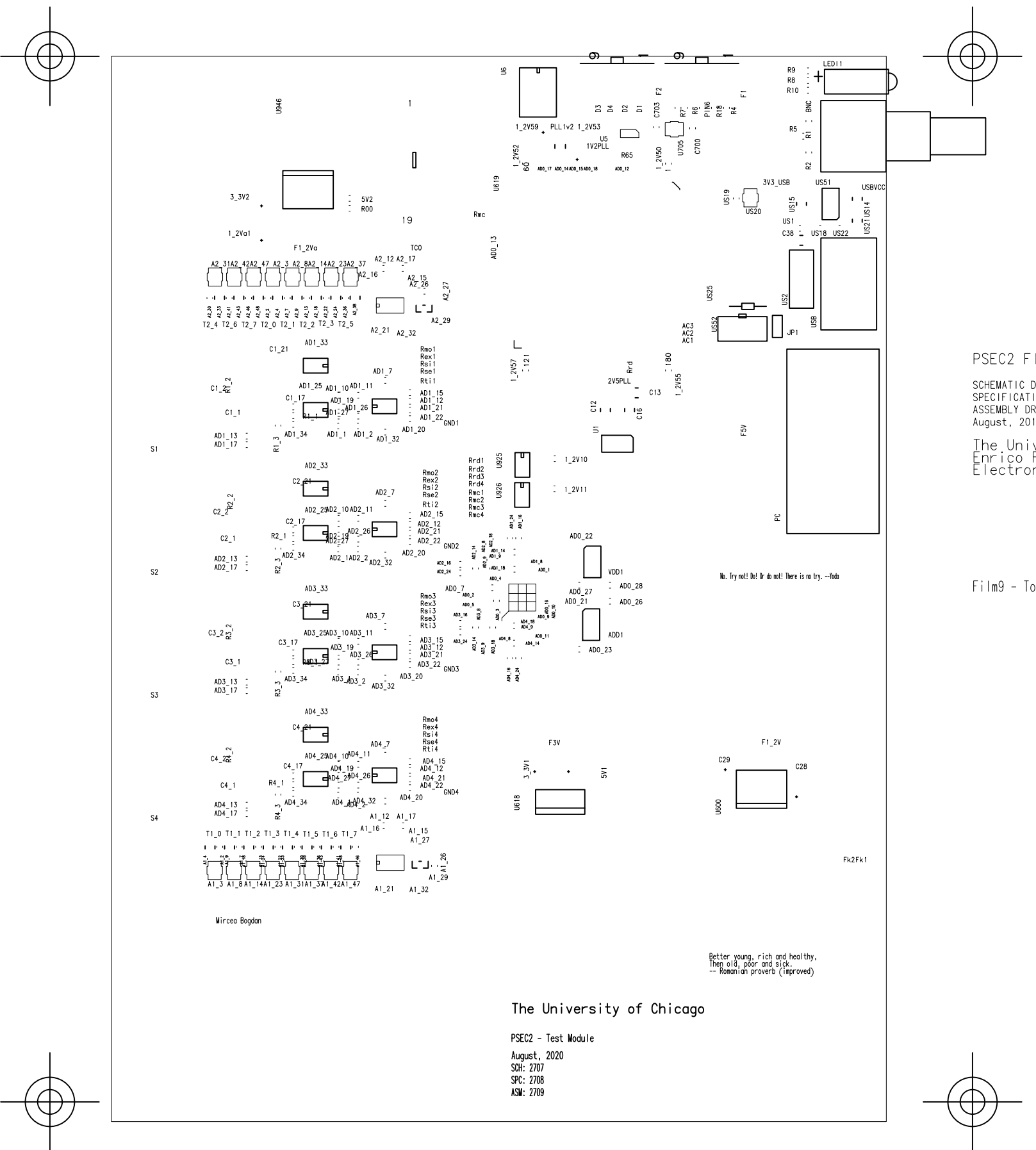


PSEC2 Flip Chip ADC Module

SCHEMATIC DRAWING: 2707 Rev.A
SPECIFICATION DRAWING: 2708 Rev.A
ASSEMBLY DRAWING: 2709 Rev.A
August, 2010

The University of Chicago
Enrico Fermi Institute
Electronics Development Group

Film8 - SIGNAL_4, Bottom



PSEC2 Flip Chip ADC Module

SCHEMATIC DRAWING: 2707 Rev.A
SPECIFICATION DRAWING: 2708 Rev.A
ASSEMBLY DRAWING: 2709 Rev.A
August, 2010

The University of Chicago
Enrico Fermi Institute
Electronics Development Group

No. Try not! Do! Or do not! There is no try. --Yoda

Film9 - Top Silkscreen

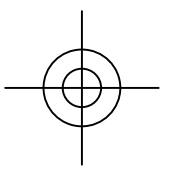
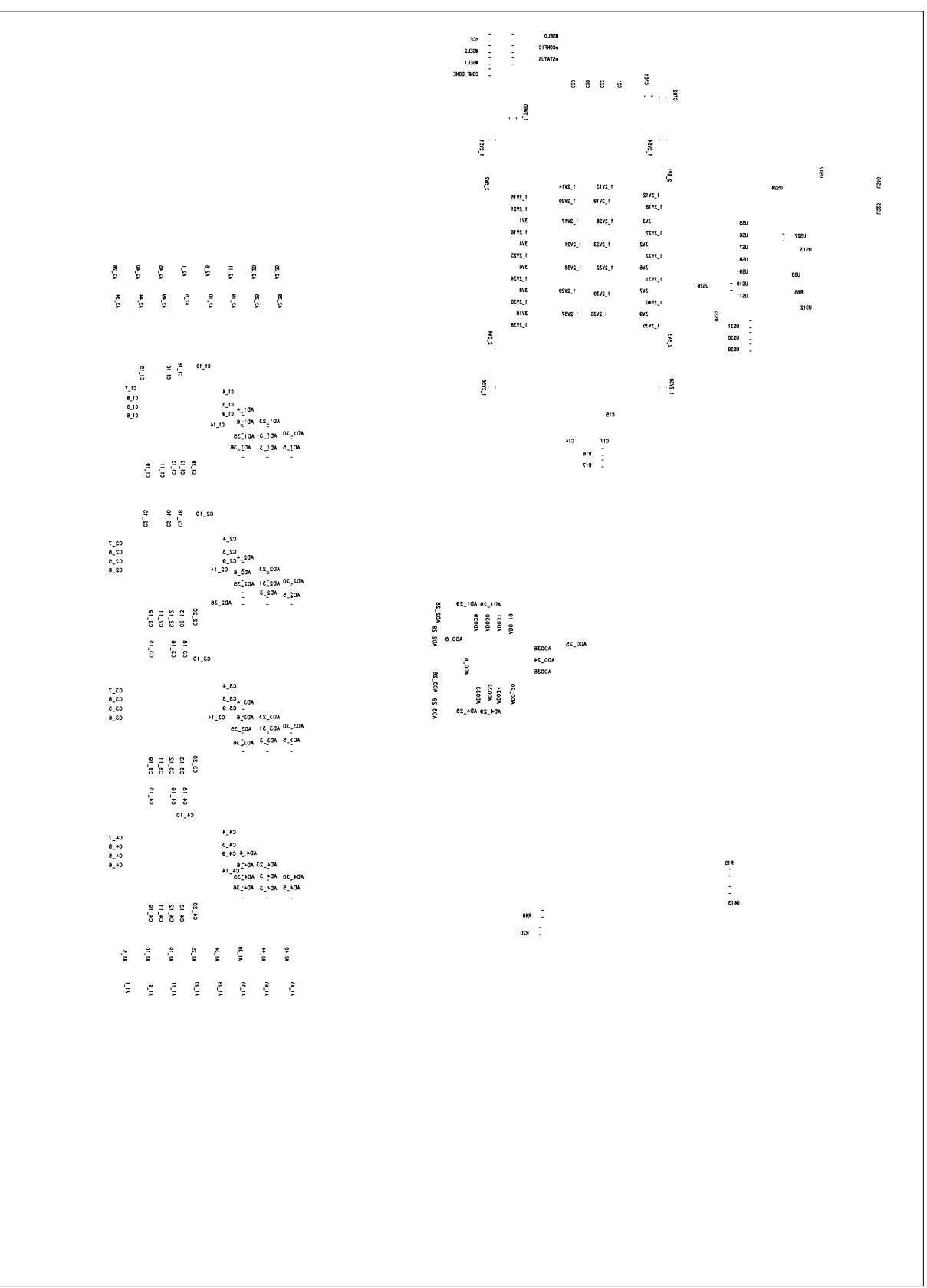
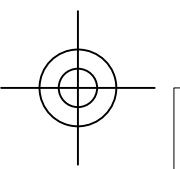
Better young, rich and healthy.
Then old, poor and sick.
-- Romanian proverb (improved)

The University of Chicago

PSEC2 - Test Module
August, 2020
SCH: 2707
SPC: 2708
ASM: 2709

Mircea Bogdan

Fk2Fk1

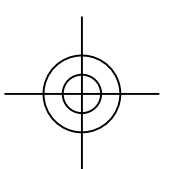


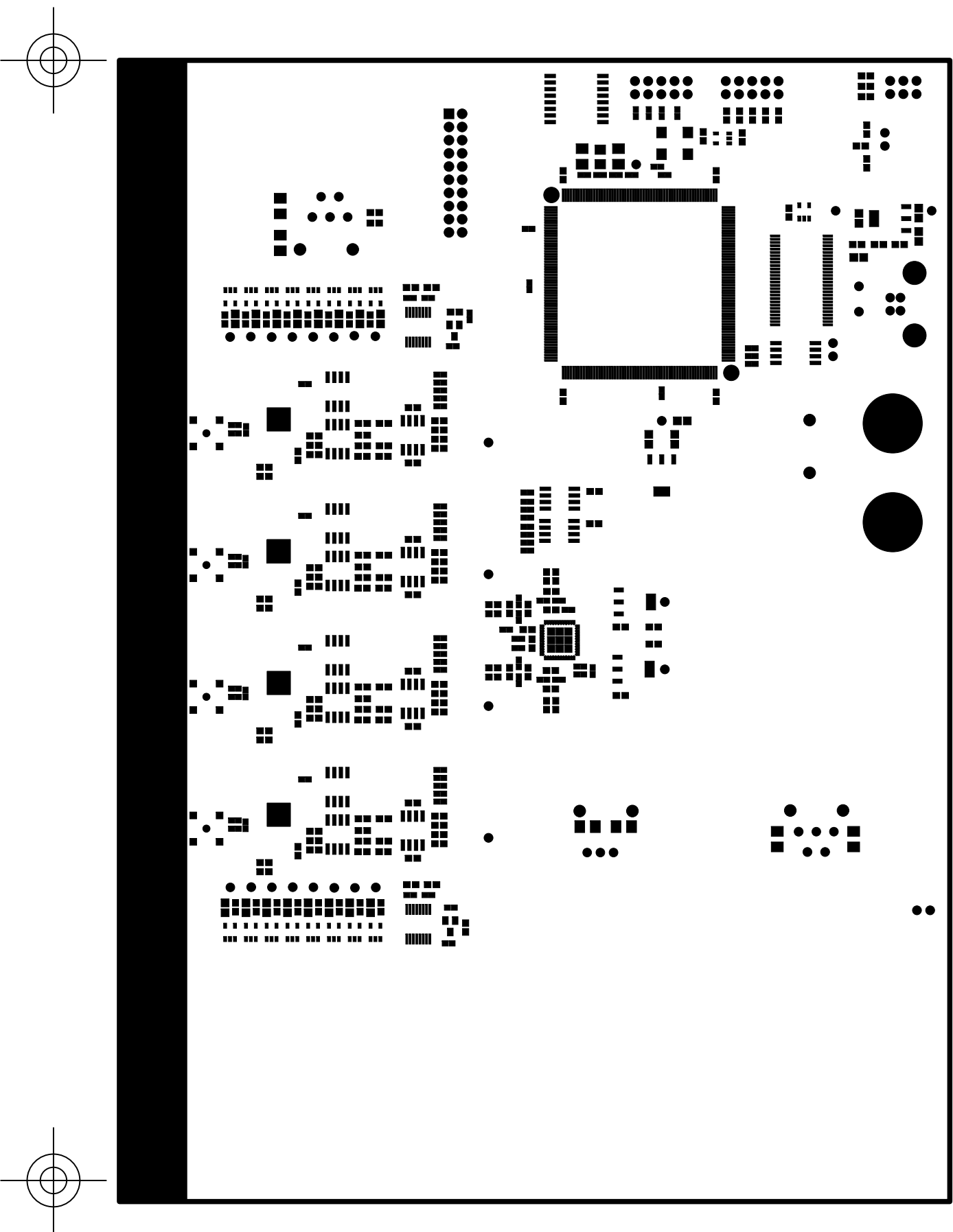
PSEC2 Flip Chip ADC Module

SCHEMATIC DRAWING: 2707 Rev.A
 SPECIFICATION DRAWING: 2708 Rev.A
 ASSEMBLY DRAWING: 2709 Rev.A
 August, 2010

The University of Chicago
 Enrico Fermi Institute
 Electronics Development Group

Film10 - Bottom Silkscreen



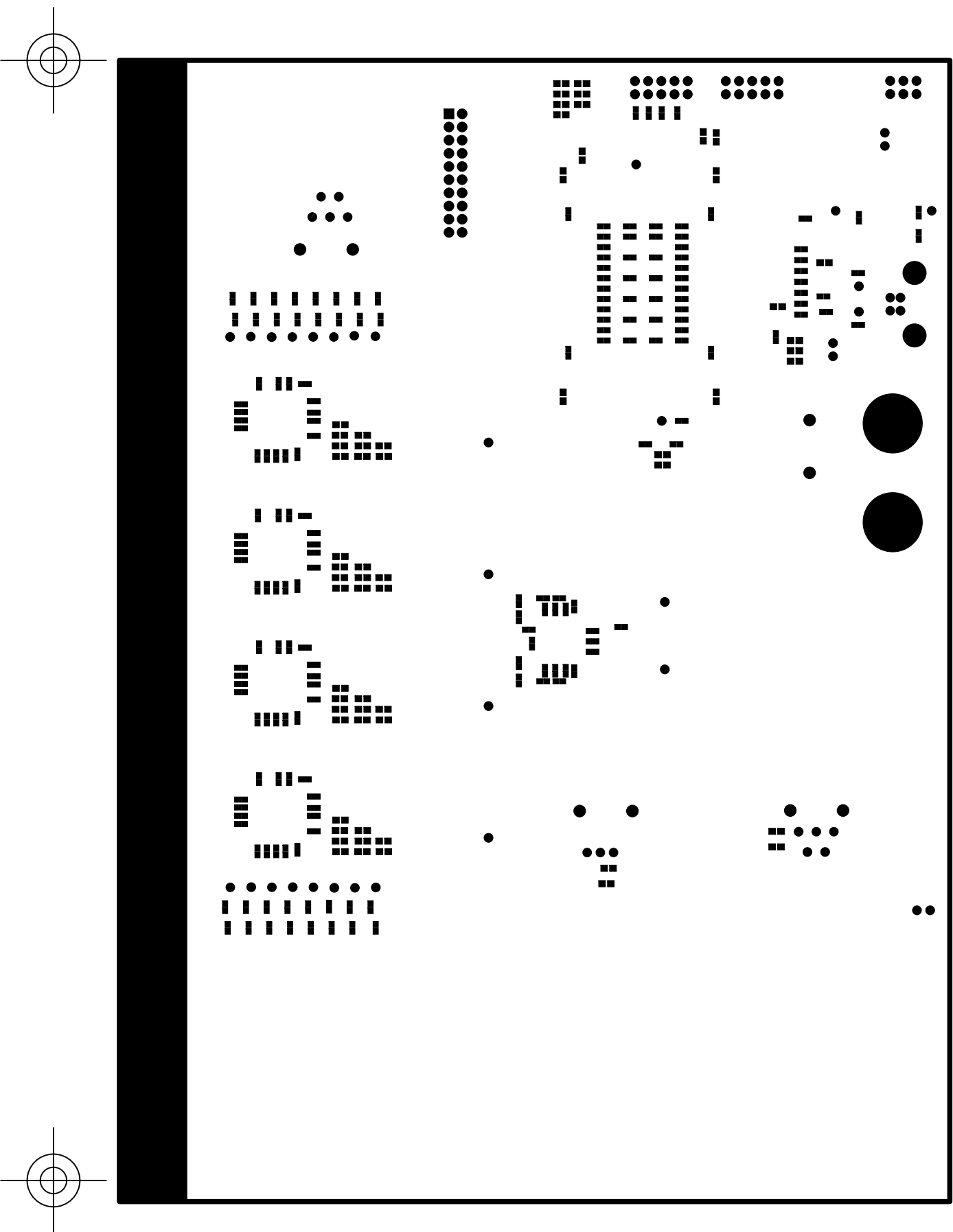


PSEC2 Flip Chip ADC Module

SCHEMATIC DRAWING: 2707 Rev.A
SPECIFICATION DRAWING: 2708 Rev.A
ASSEMBLY DRAWING: 2709 Rev.A
August, 2010

The University of Chicago
Enrico Fermi Institute
Electronics Development Group

Film11 - Top Soldermask



PSEC2 Flip Chip ADC Module

SCHEMATIC DRAWING: 2707 Rev.A
SPECIFICATION DRAWING: 2708 Rev.A
ASSEMBLY DRAWING: 2709 Rev.A
August, 2010

The University of Chicago
Enrico Fermi Institute
Electronics Development Group

Film12 - Bottom Soldermask

