

PSEC3 Tester Board

SCHEMATIC DRAWING: 2710 Rev.B

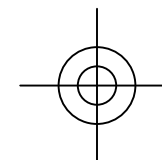
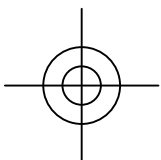
SPECIFICATION DRAWING: 2711 Rev.B

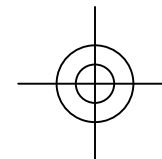
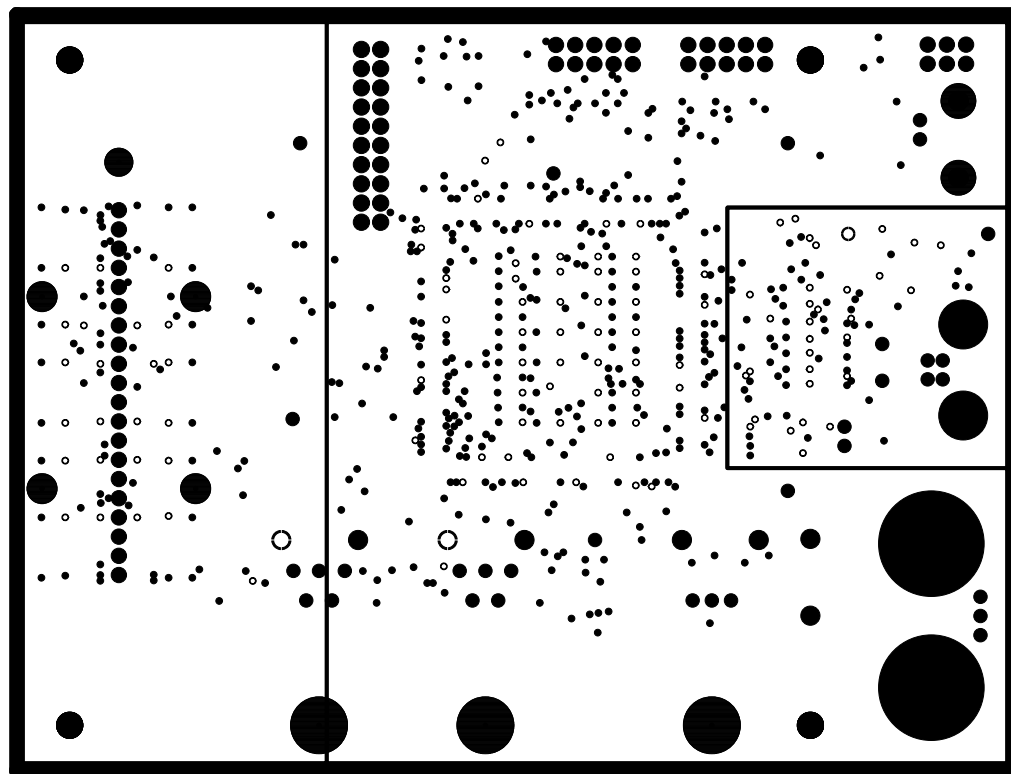
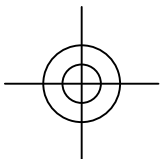
ASSEMBLY DRAWING: 2712 Rev.B

Feb. 22, 2011

The University of Chicago
Enrico Fermi Institute
Electronics Development Group

Film1 - SIGNAL_1, Top





PSEC3 Tester Board

SCHEMATIC DRAWING: 2710 Rev.B

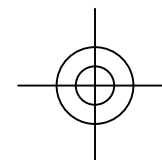
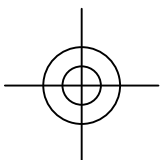
SPECIFICATION DRAWING: 2711 Rev.B

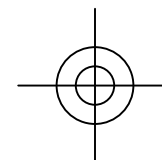
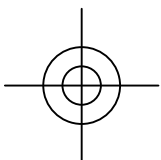
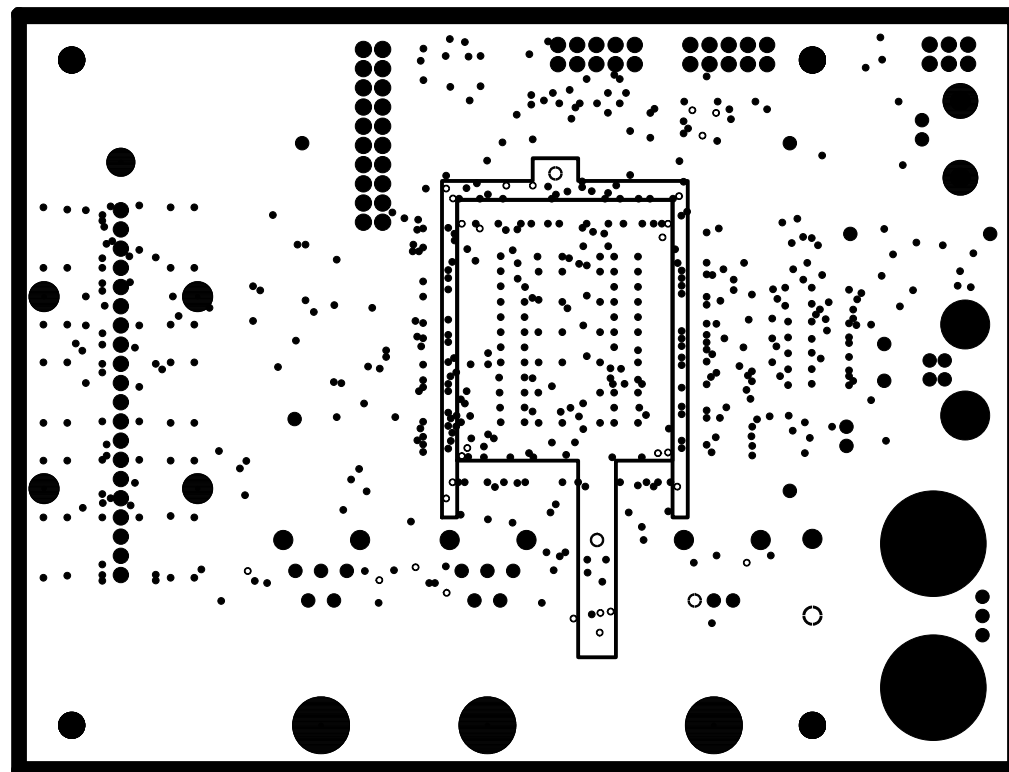
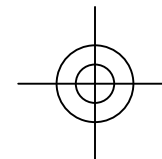
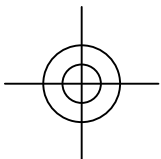
ASSEMBLY DRAWING: 2712 Rev.B

Feb. 22, 2011

The University of Chicago
Enrico Fermi Institute
Electronics Development Group

Film2 - POWER_1: +1.2Va, +1.2V, +3.3VUSB





PSEC3 Tester Board

SCHEMATIC DRAWING: 2710 Rev.B

SPECIFICATION DRAWING: 2711 Rev.B

ASSEMBLY DRAWING: 2712 Rev.B

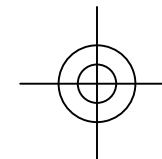
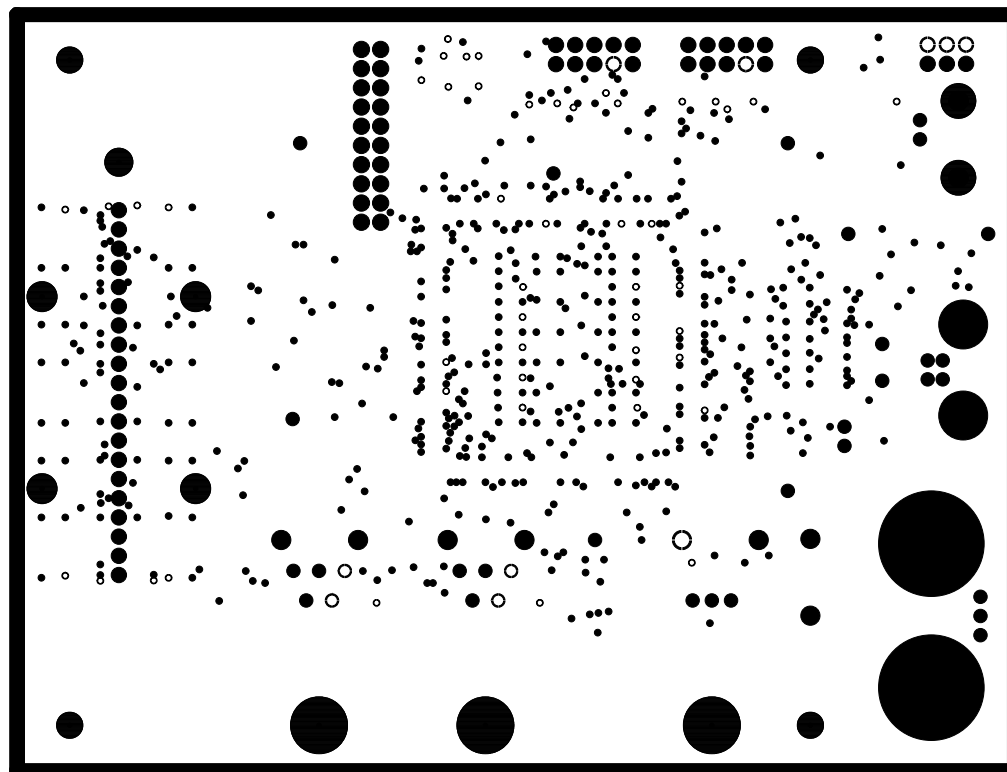
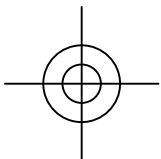
Feb. 22, 2011

The University of Chicago

Enrico Fermi Institute

Electronics Development Group

Film3 - VCC, +2.5V, +1.2V_PLL



PSEC3 Tester Board

SCHEMATIC DRAWING: 2710 Rev.B

SPECIFICATION DRAWING: 2711 Rev.B

ASSEMBLY DRAWING: 2712 Rev.B

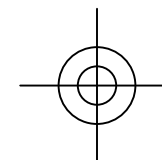
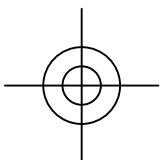
Feb. 22, 2011

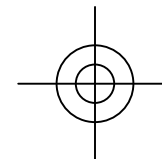
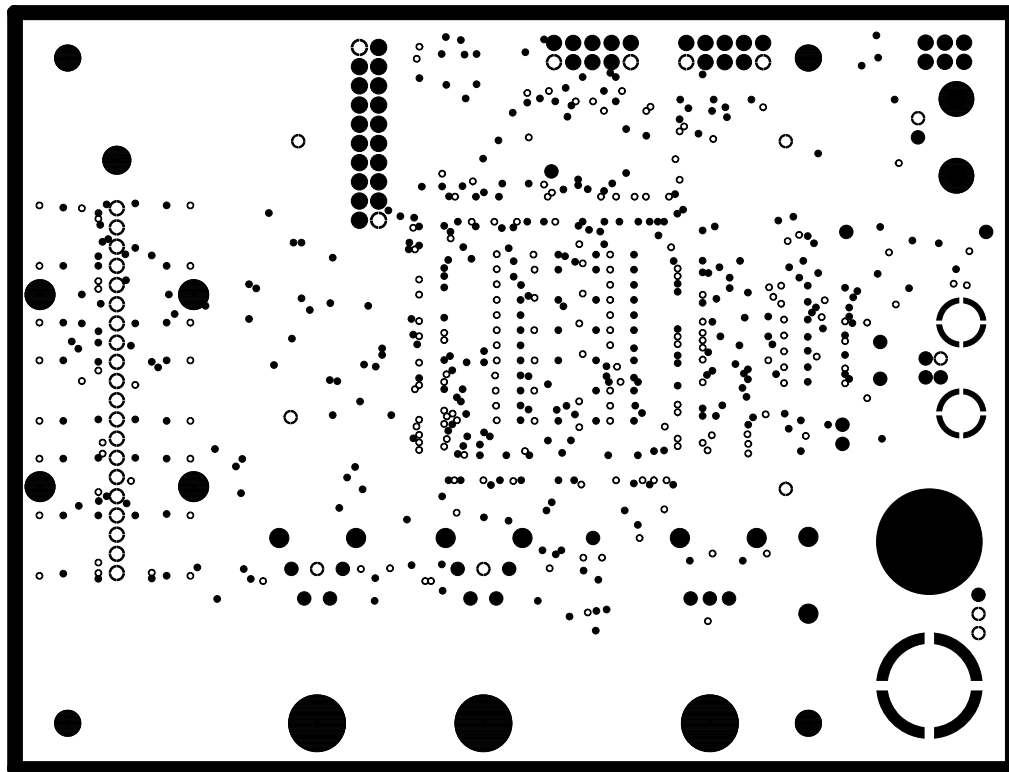
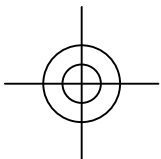
The University of Chicago

Enrico Fermi Institute

Electronics Development Group

Film4 - +3.0V





PSEC3 Tester Board

SCHEMATIC DRAWING: 2710 Rev.B

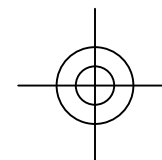
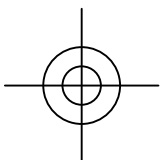
SPECIFICATION DRAWING: 2711 Rev.B

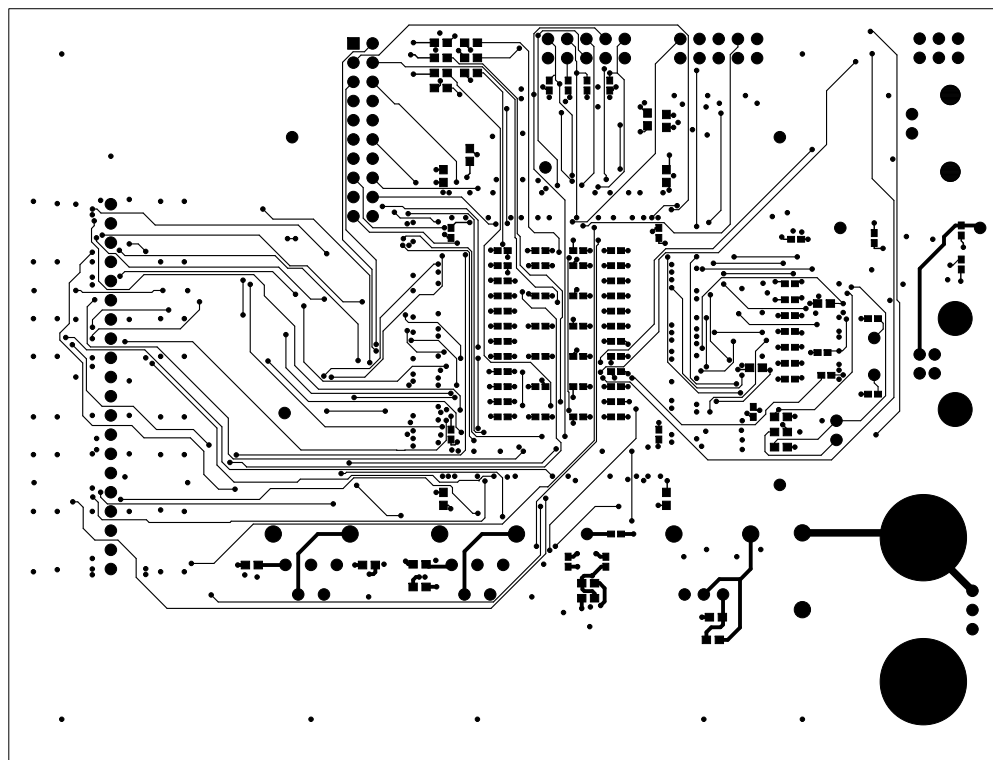
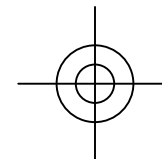
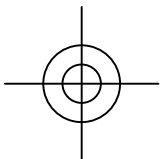
ASSEMBLY DRAWING: 2712 Rev.B

Feb. 22, 2011

The University of Chicago
Enrico Fermi Institute
Electronics Development Group

Film5 - GROUND





PSEC3 Tester Board

SCHEMATIC DRAWING: 2710 Rev.B

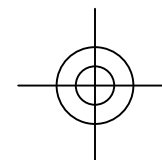
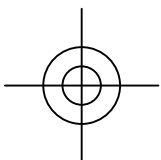
SPECIFICATION DRAWING: 2711 Rev.B

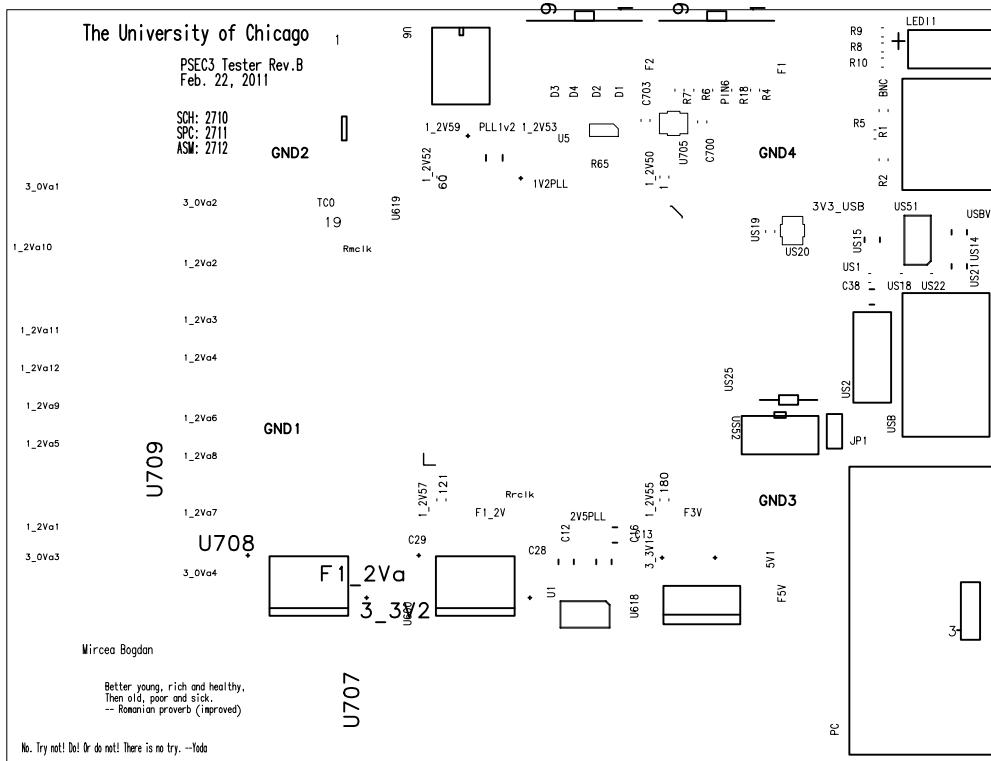
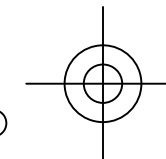
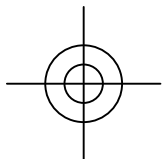
ASSEMBLY DRAWING: 2712 Rev.B

Feb. 22, 2011

The University of Chicago
Enrico Fermi Institute
Electronics Development Group

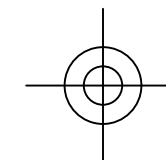
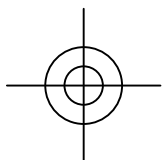
Film6 - SIGNAL_4, Bottom

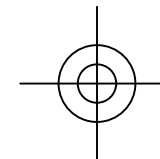
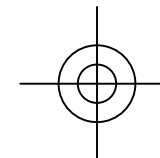
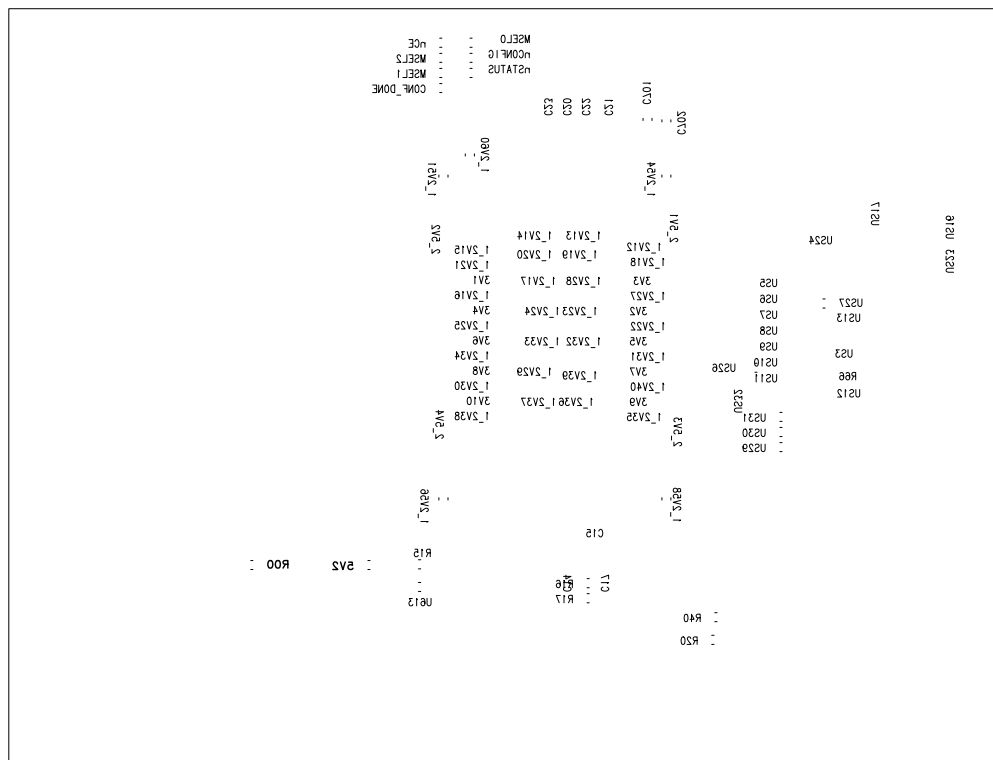
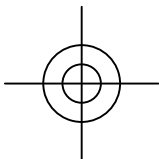
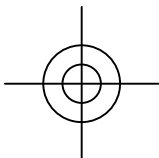




PSEC3 Tester Board
 SCHEMATIC DRAWING: 2710 Rev.B
 SPECIFICATION DRAWING: 2711 Rev.B
 ASSEMBLY DRAWING: 2712 Rev.B
 Feb. 22, 2011
 The University of Chicago
 Enrico Fermi Institute
 Electronics Development Group

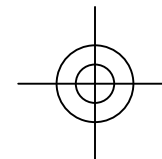
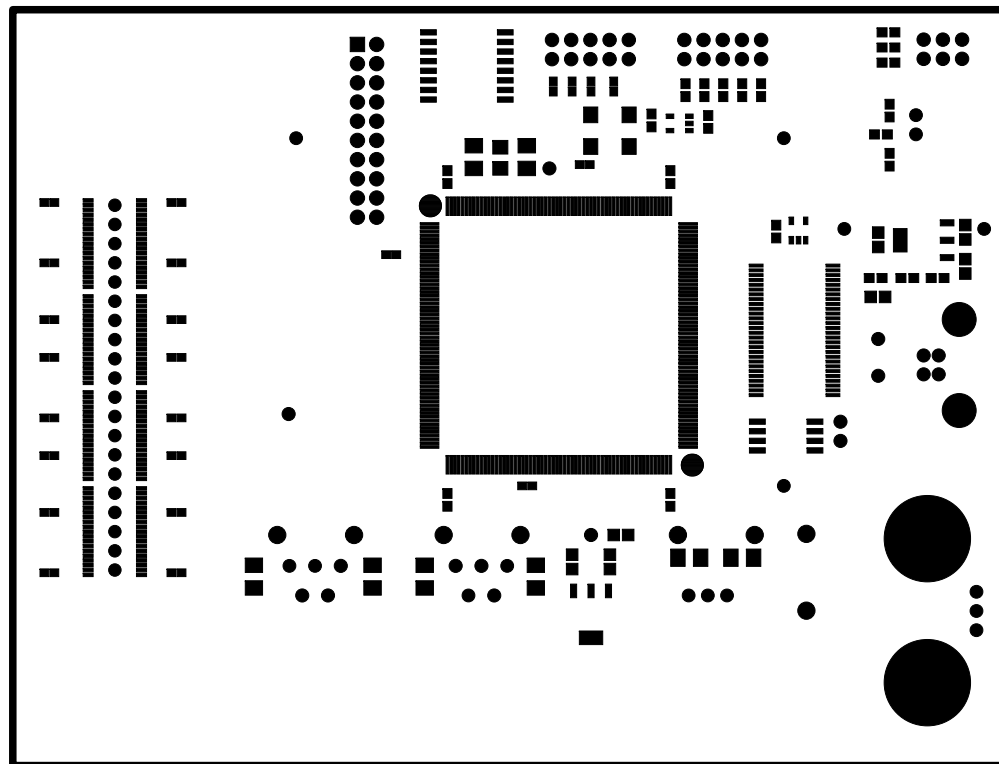
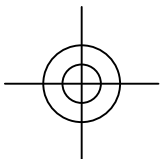
Film7 - Top Silkscreen





PSEC3 Tester Board
 SCHEMATIC DRAWING: 2710 Rev.B
 SPECIFICATION DRAWING: 2711 Rev.B
 ASSEMBLY DRAWING: 2712 Rev.B
 Feb. 22, 2011
 The University of Chicago
 Enrico Fermi Institute
 Electronics Development Group

Film8 - Bottom Silkscreen



PSEC3 Tester Board

SCHEMATIC DRAWING: 2710 Rev.B

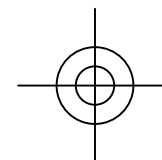
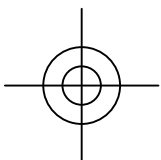
SPECIFICATION DRAWING: 2711 Rev.B

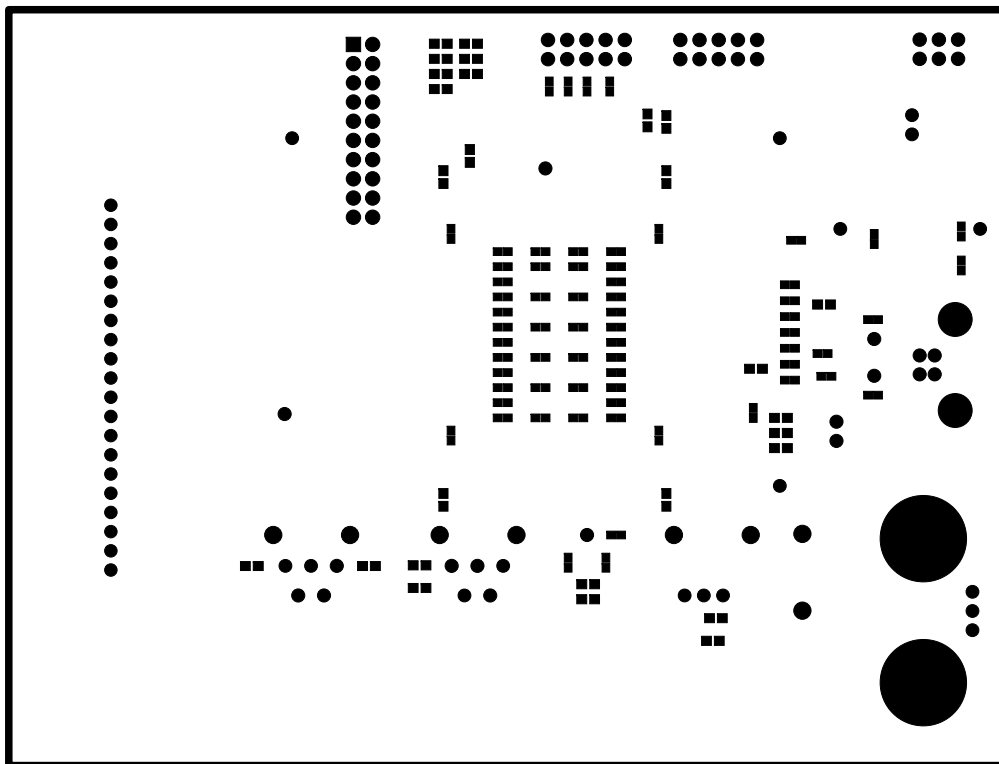
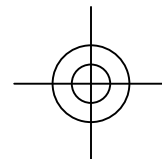
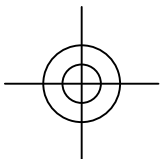
ASSEMBLY DRAWING: 2712 Rev.B

Feb. 22, 2011

The University of Chicago
Enrico Fermi Institute
Electronics Development Group

Film9 - Top Soldermask





PSEC3 Tester Board

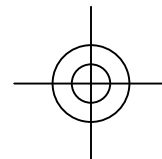
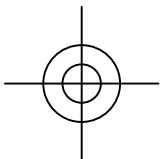
SCHEMATIC DRAWING: 2710 Rev.B

SPECIFICATION DRAWING: 2711 Rev.B

ASSEMBLY DRAWING: 2712 Rev.B

Feb. 22, 2011

The University of Chicago
Enrico Fermi Institute
Electronics Development Group



Film10 - Bottom Soldermask

