

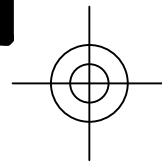
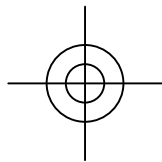
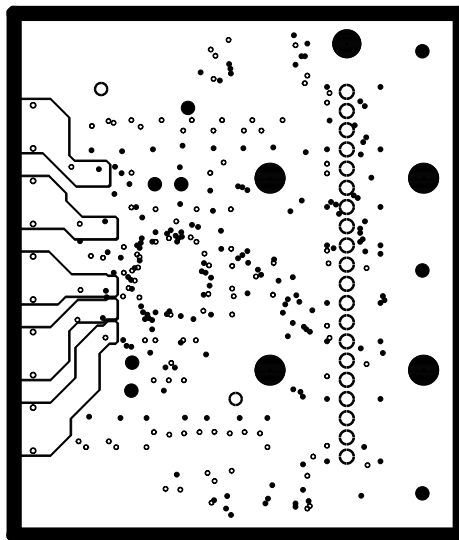
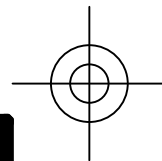
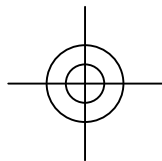
PSEC3 Flip Mezzanine Card

SCHEMATIC DRAWING: 2728 Rev.A
SPECIFICATION DRAWING: 2729 Rev.A
ASSEMBLY DRAWING: 2730 Rev.A

March 18, 2011

The University of Chicago
Enrico Fermi Institute
Electronics Development Group

Film1 - SIGNAL_1, Top



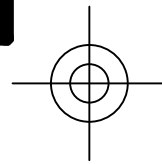
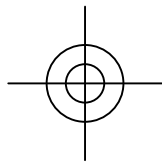
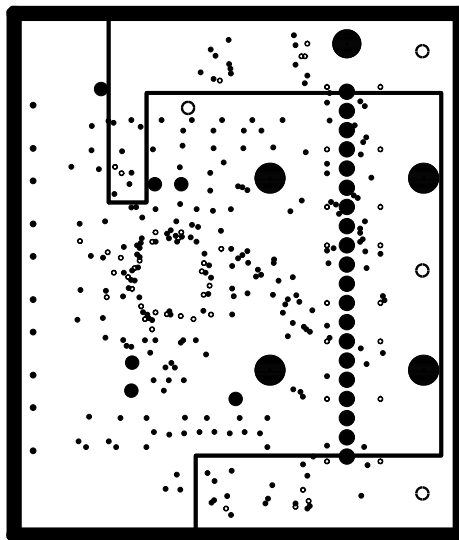
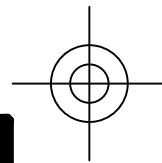
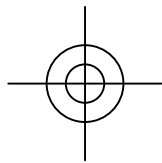
PSEC3 Flip Mezzanine Card

SCHEMATIC DRAWING: 2728 Rev.A
SPECIFICATION DRAWING: 2729 Rev.A
ASSEMBLY DRAWING: 2730 Rev.A

March 18, 2011

The University of Chicago
Enrico Fermi Institute
Electronics Development Group

Film2 - GROUND



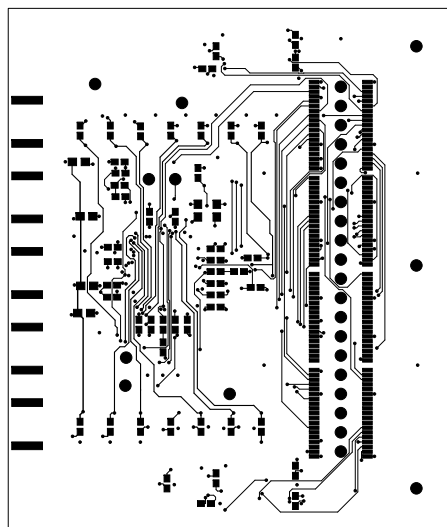
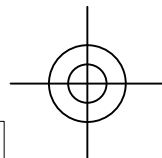
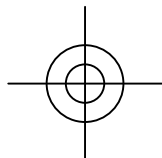
PSEC3 Flip Mezzanine Card

SCHEMATIC DRAWING: 2728 Rev.A
SPECIFICATION DRAWING: 2729 Rev.A
ASSEMBLY DRAWING: 2730 Rev.A

March 18, 2011

The University of Chicago
Enrico Fermi Institute
Electronics Development Group

Film3 - POWER_1: +1.2Va, +3.0V



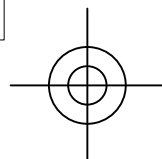
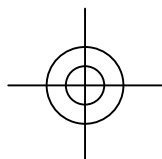
PSEC3 Flip Mezzanine Card

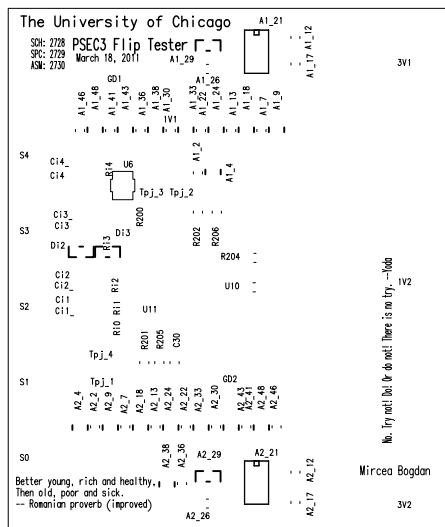
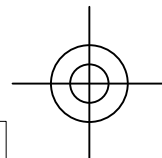
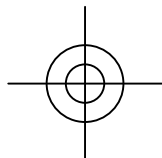
SCHEMATIC DRAWING: 2728 Rev.A
SPECIFICATION DRAWING: 2729 Rev.A
ASSEMBLY DRAWING: 2730 Rev.A

March 18, 2011

The University of Chicago
Enrico Fermi Institute
Electronics Development Group

Film6 - SIGNAL_4, Bottom





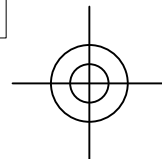
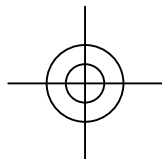
PSEC3 Flip Mezzanine Card

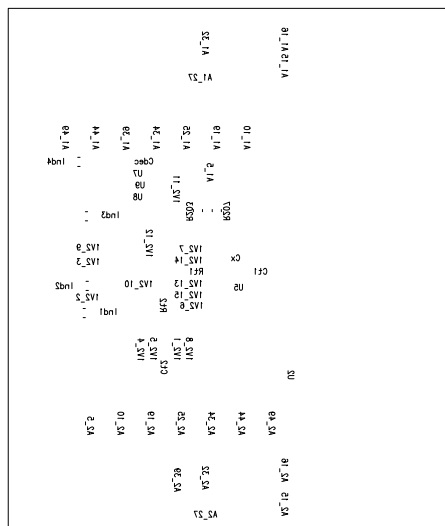
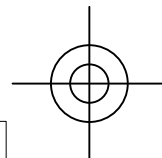
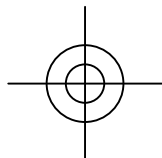
SCHEMATIC DRAWING: 2728 Rev.A
 SPECIFICATION DRAWING: 2729 Rev.A
 ASSEMBLY DRAWING: 2730 Rev.A

March 18, 2011

The University of Chicago
 Enrico Fermi Institute
 Electronics Development Group

Film7 - Top Silkscreen





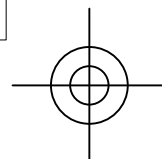
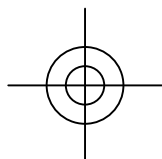
PSEC3 Flip Mezzanine Card

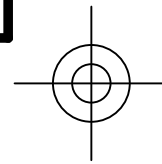
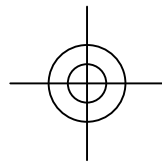
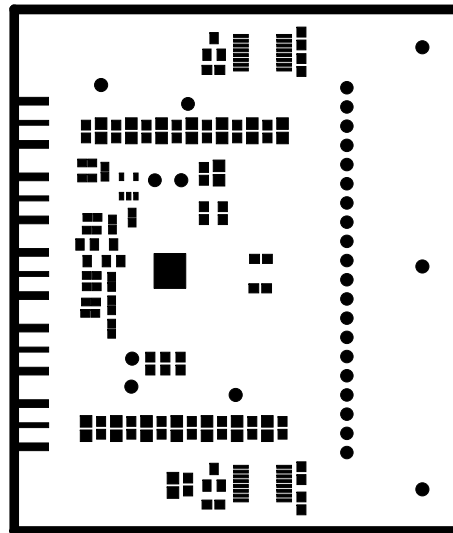
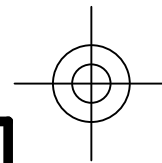
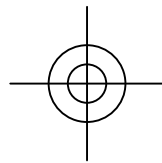
SCHEMATIC DRAWING: 2728 Rev.A
SPECIFICATION DRAWING: 2729 Rev.A
ASSEMBLY DRAWING: 2730 Rev.A

March 18, 2011

The University of Chicago
Enrico Fermi Institute
Electronics Development Group

Film8 - Bottom Silkscreen





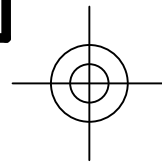
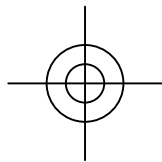
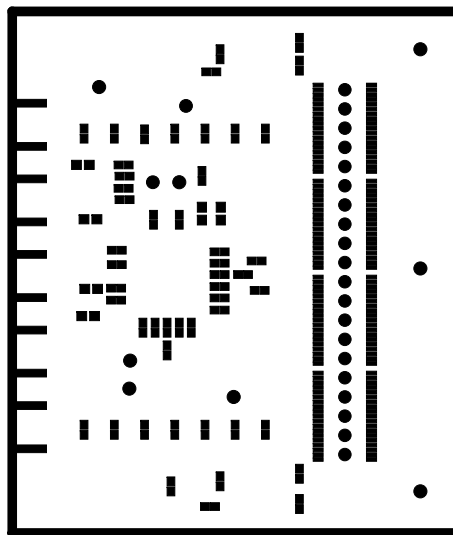
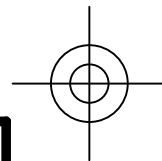
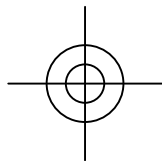
PSEC3 Flip Mezzanine Card

SCHEMATIC DRAWING: 2728 Rev.A
SPECIFICATION DRAWING: 2729 Rev.A
ASSEMBLY DRAWING: 2730 Rev.A

March 18, 2011

The University of Chicago
Enrico Fermi Institute
Electronics Development Group

Film9 - Top Soldermask



PSEC3 Flip Mezzanine Card

SCHEMATIC DRAWING: 2728 Rev.A
SPECIFICATION DRAWING: 2729 Rev.A
ASSEMBLY DRAWING: 2730 Rev.A

March 18, 2011

The University of Chicago
Enrico Fermi Institute
Electronics Development Group

Film10 - Bottom Soldermask

