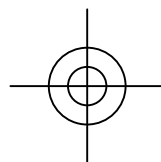
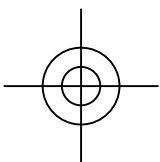
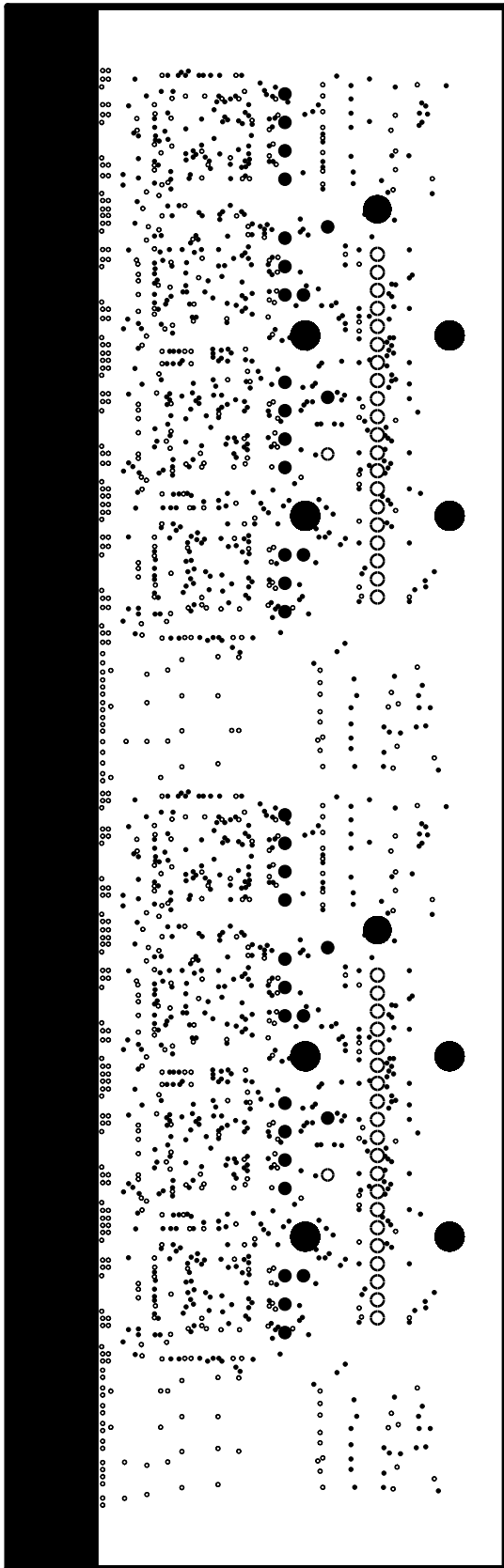
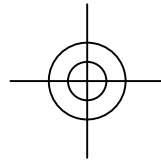
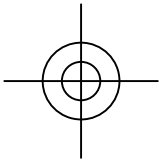


PSEC Analog Card

SCHEMATIC DRAWING: 2719 Rev.A  
SPECIFICATION DRAWING: 2720 Rev.A  
ASSEMBLY DRAWING: 2721 Rev.A  
March, 2011

The University of Chicago  
Enrico Fermi Institute  
Electronics Development Group

Film1 - SIGNAL\_1, Top

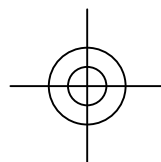
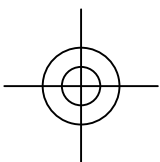
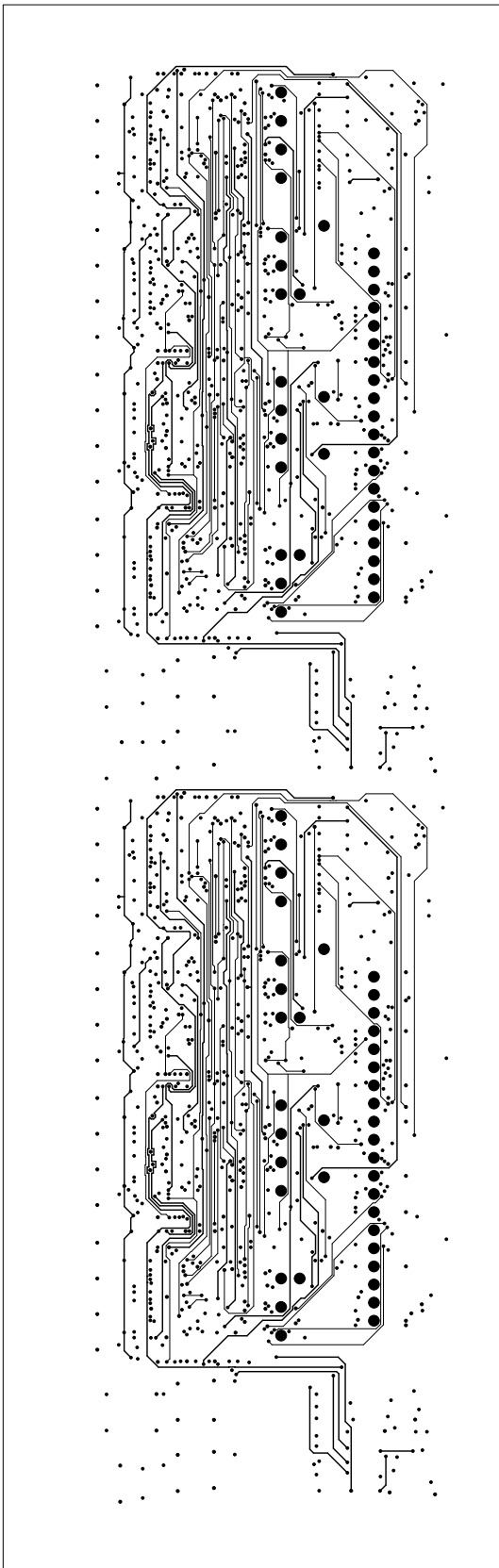
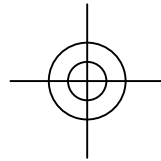
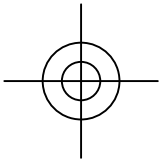


PSEC Analog Card

SCHEMATIC DRAWING: 2719 Rev.A  
SPECIFICATION DRAWING: 2720 Rev.A  
ASSEMBLY DRAWING: 2721 Rev.A  
March, 2011

The University of Chicago  
Enrico Fermi Institute  
Electronics Development Group

Film2 - GROUND

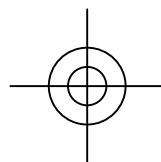
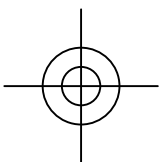
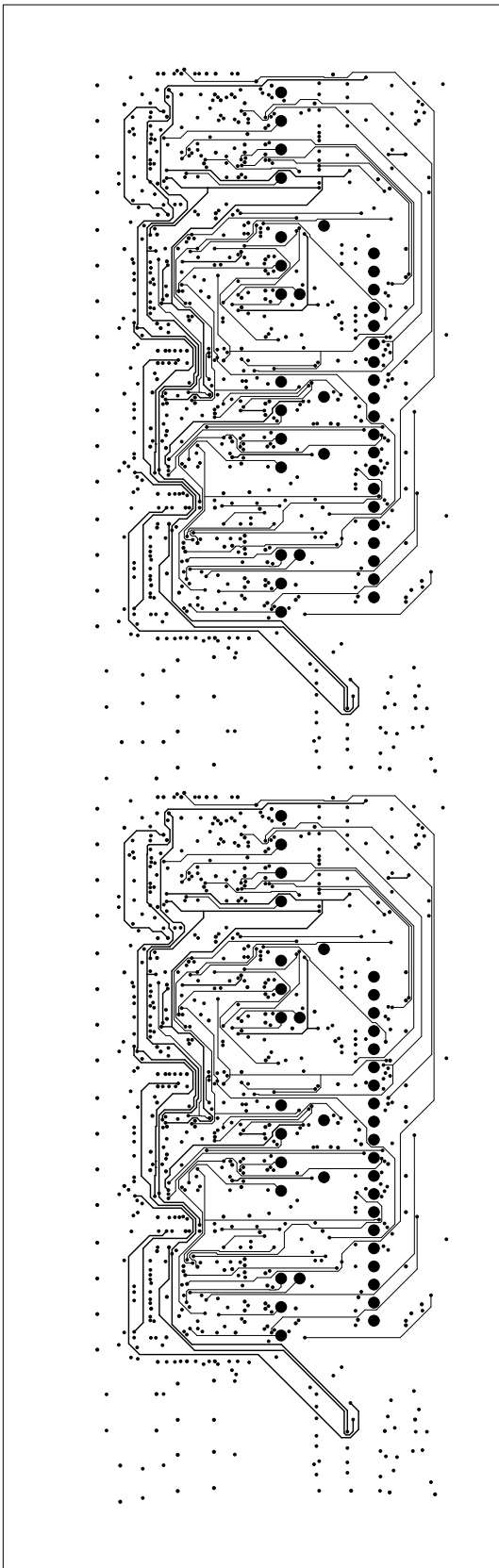
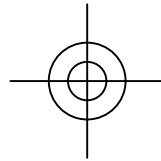
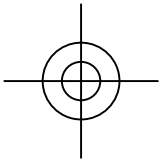


PSEC Analog Card

SCHEMATIC DRAWING: 2719 Rev.A  
SPECIFICATION DRAWING: 2720 Rev.A  
ASSEMBLY DRAWING: 2721 Rev.A  
March, 2011

The University of Chicago  
Enrico Fermi Institute  
Electronics Development Group

Film3 - SIGNAL\_2

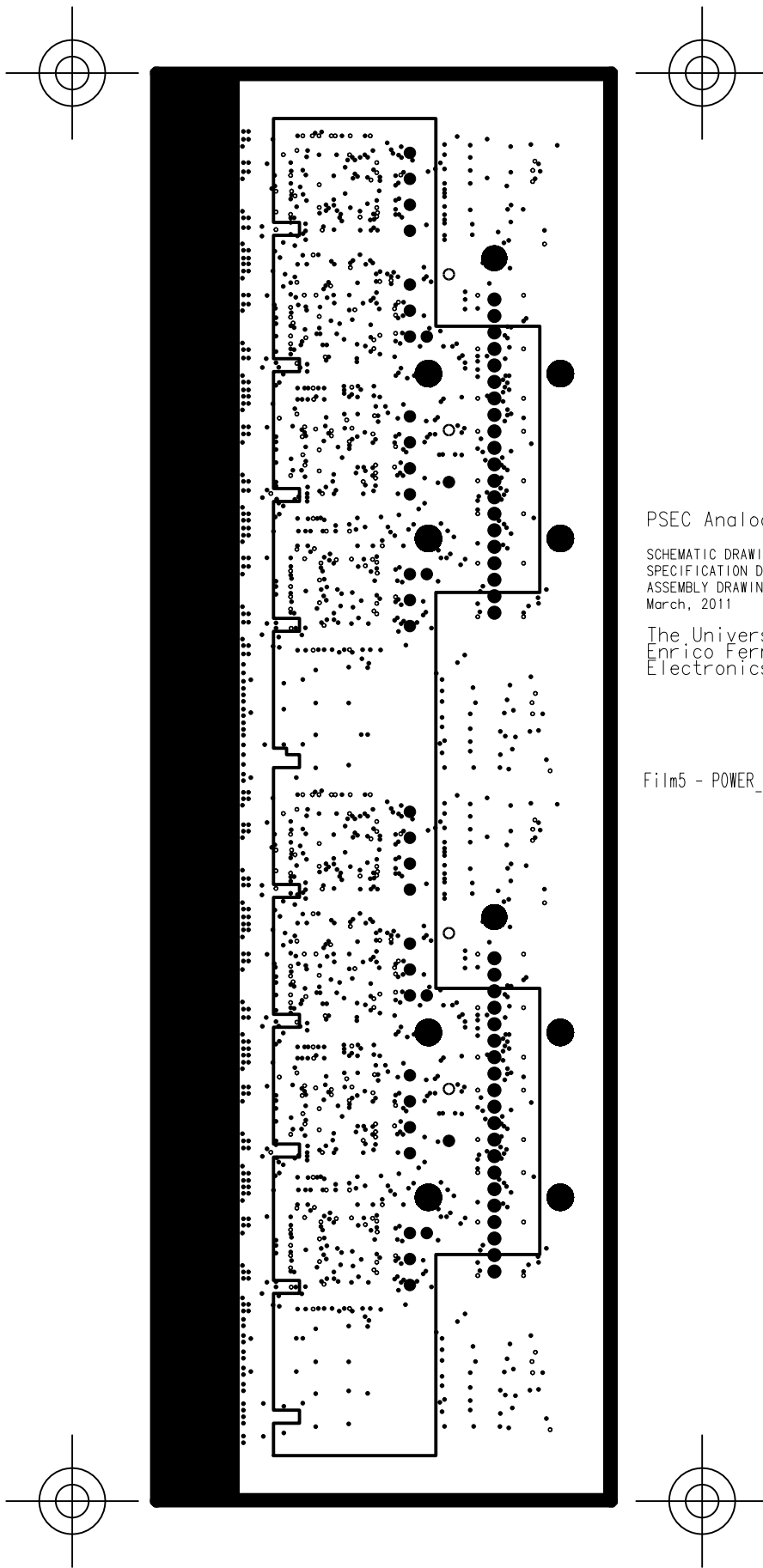


PSEC Analog Card

SCHEMATIC DRAWING: 2719 Rev.A  
SPECIFICATION DRAWING: 2720 Rev.A  
ASSEMBLY DRAWING: 2721 Rev.A  
March, 2011

The University of Chicago  
Enrico Fermi Institute  
Electronics Development Group

Film4 - SIGNAL\_3

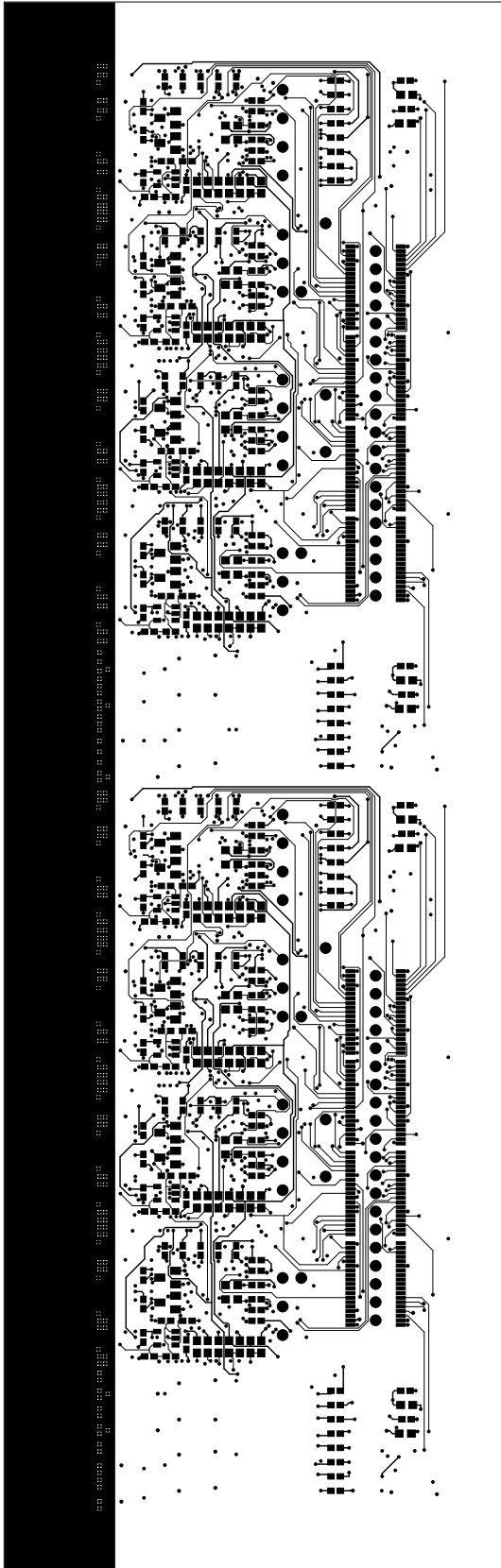
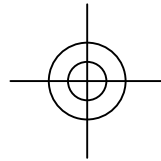
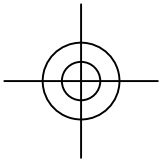


PSEC Analog Card

SCHEMATIC DRAWING: 2719 Rev.A  
SPECIFICATION DRAWING: 2720 Rev.A  
ASSEMBLY DRAWING: 2721 Rev.A  
March, 2011

The University of Chicago  
Enrico Fermi Institute  
Electronics Development Group

Film5 - POWER\_1: +1.2V, +3.0V

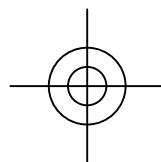
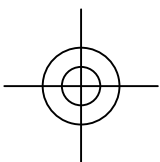


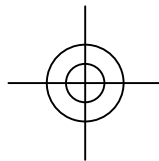
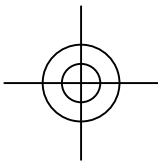
PSEC Analog Card

SCHEMATIC DRAWING: 2719 Rev.A  
SPECIFICATION DRAWING: 2720 Rev.A  
ASSEMBLY DRAWING: 2721 Rev.A  
March, 2011

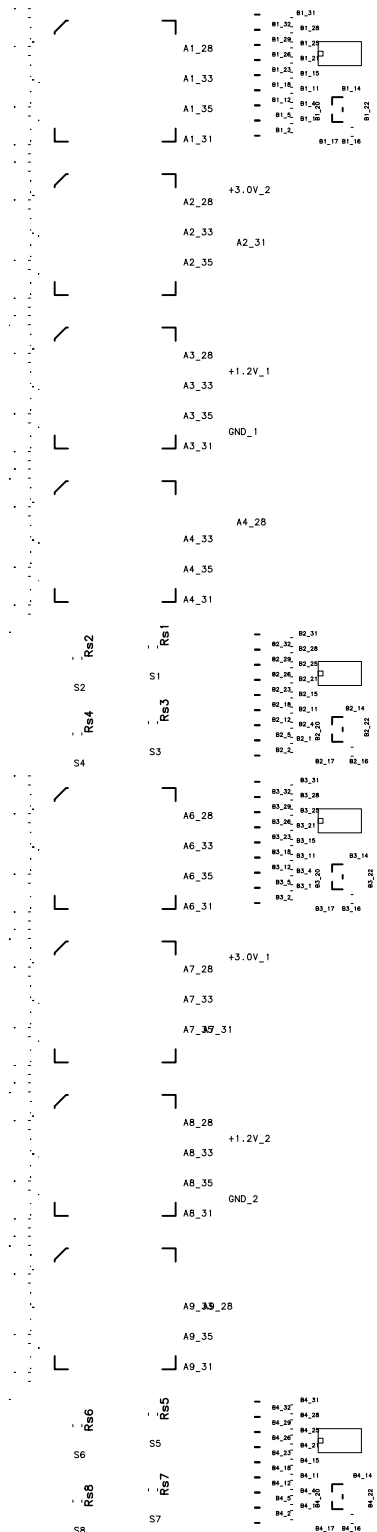
The University of Chicago  
Enrico Fermi Institute  
Electronics Development Group

Film6 - SIGNAL\_4, Bottom





Better young, rich and healthy,  
 Then old, poor and sick.  
 -- Romanian proverb (improved)



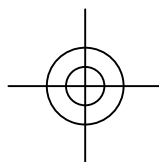
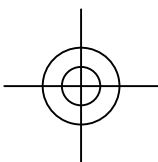
Mk: Try not! Dbl: Dr: do not! There is no try. --Bob

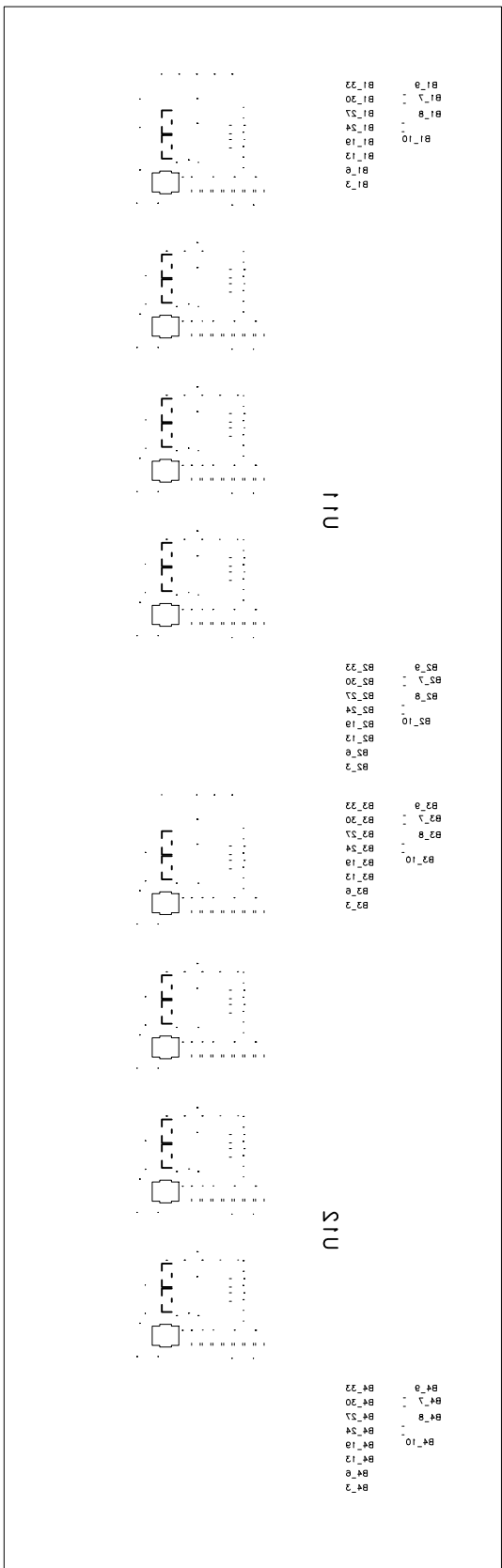
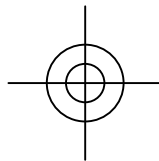
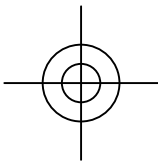
### PSEC Analog Card

SCHEMATIC DRAWING: 2719 Rev.A  
 SPECIFICATION DRAWING: 2720 Rev.A  
 ASSEMBLY DRAWING: 2721 Rev.A  
 March, 2011

The University of Chicago  
 Enrico Fermi Institute  
 Electronics Development Group

### Film7 - Top Silkscreen



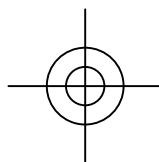
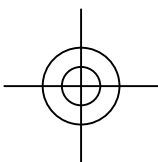


PSEC Analog Card

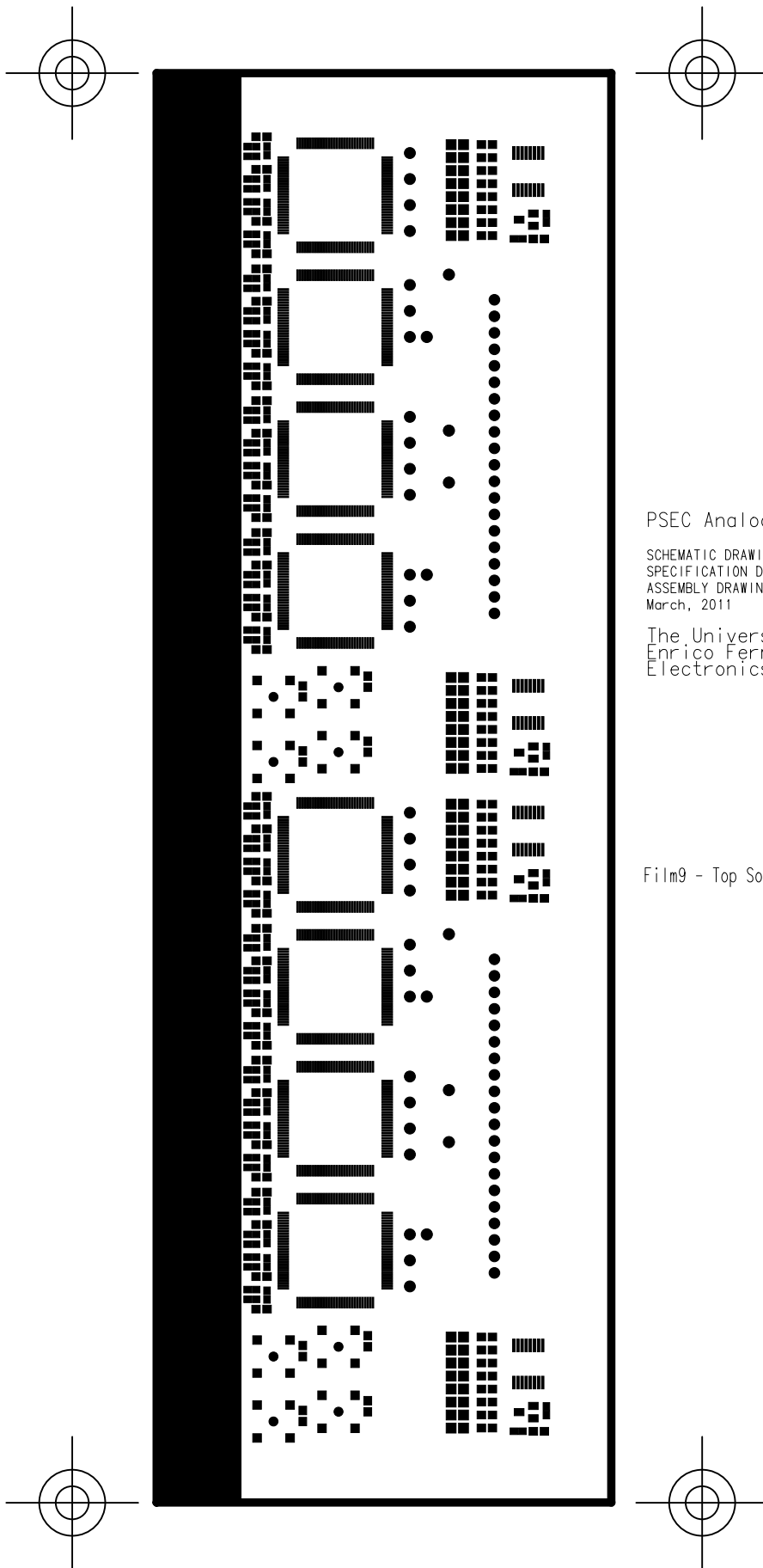
SCHEMATIC DRAWING: 2719 Rev.A  
 SPECIFICATION DRAWING: 2720 Rev.A  
 ASSEMBLY DRAWING: 2721 Rev.A  
 March, 2011

The University of Chicago  
 Enrico Fermi Institute  
 Electronics Development Group

Film8 - Bottom Silkscreen





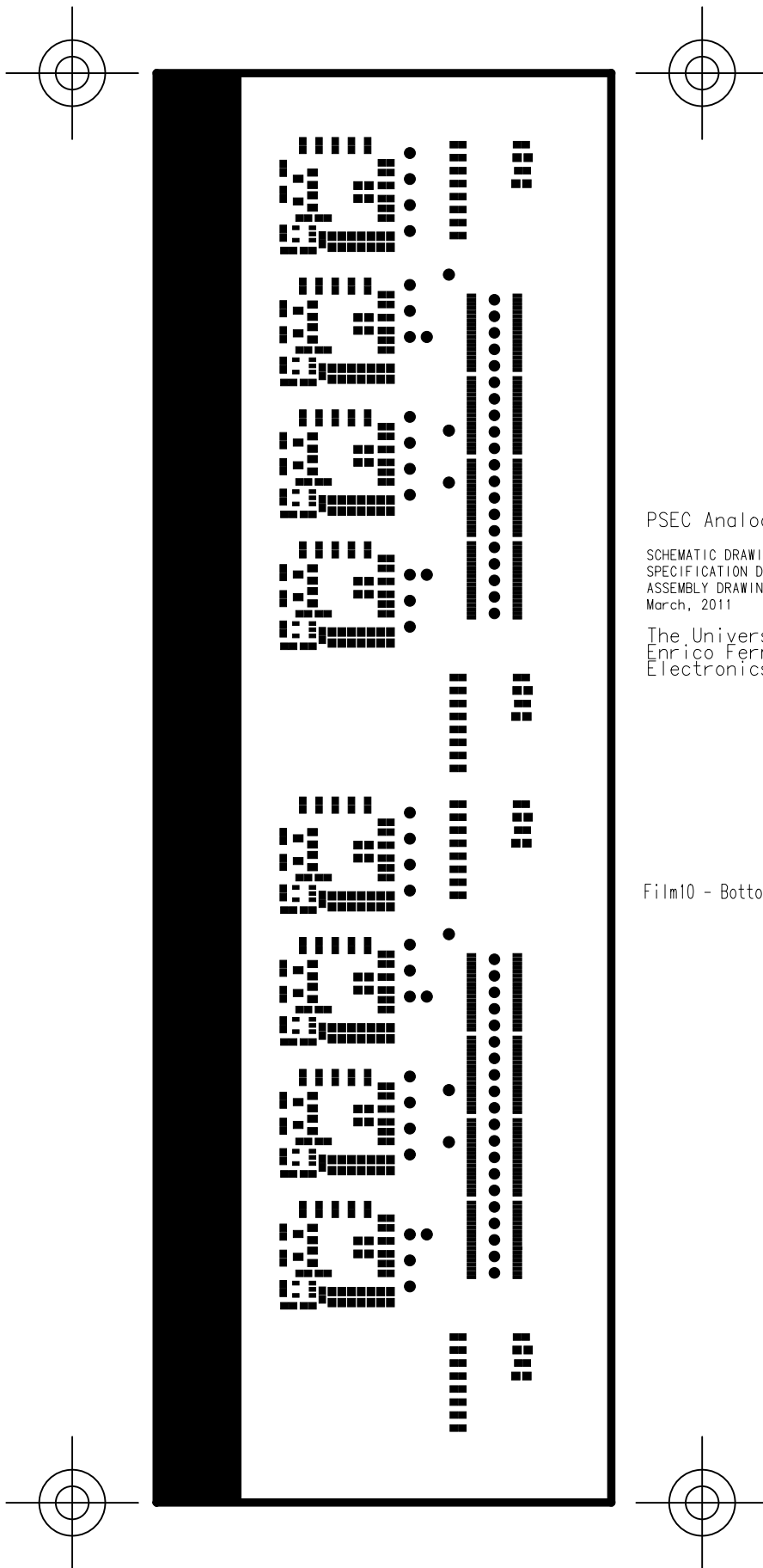


PSEC Analog Card

SCHEMATIC DRAWING: 2719 Rev.A  
SPECIFICATION DRAWING: 2720 Rev.A  
ASSEMBLY DRAWING: 2721 Rev.A  
March, 2011

The University of Chicago  
Enrico Fermi Institute  
Electronics Development Group

Film9 - Top Soldermask



PSEC Analog Card

SCHEMATIC DRAWING: 2719 Rev.A  
SPECIFICATION DRAWING: 2720 Rev.A  
ASSEMBLY DRAWING: 2721 Rev.A  
March, 2011

The University of Chicago  
Enrico Fermi Institute  
Electronics Development Group

Film10 - Bottom Soldermask

