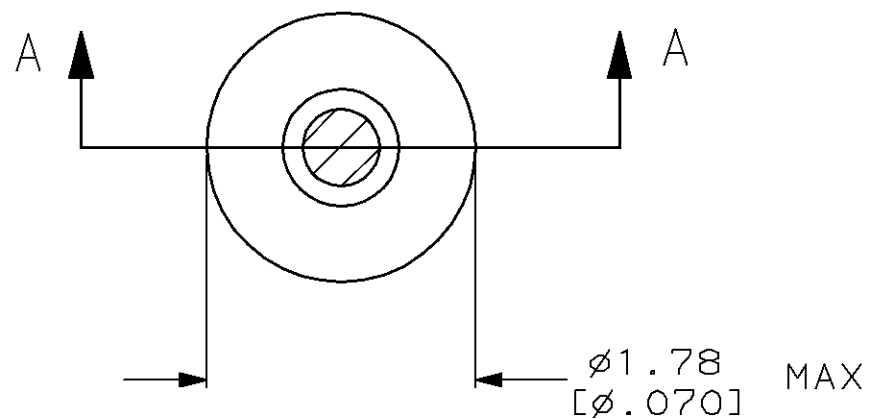
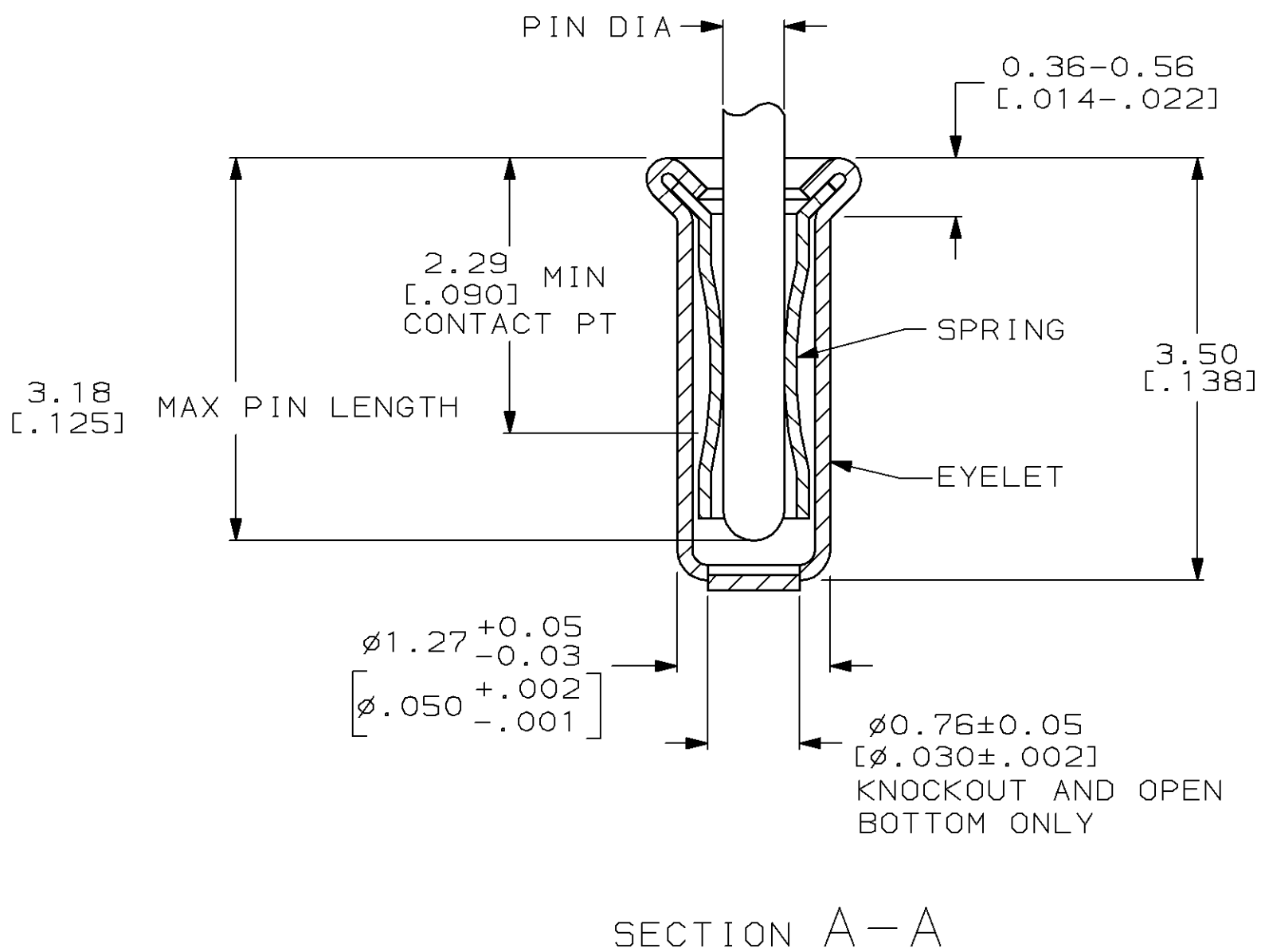


LOC	DIST	P	F	ZONE	LTR	DESCRIPTION	DATE	APPD
FT	64				AP	REDRAWN & REV PER AG-2416	4-5-91	RET
					AR	REV PER EC 0330-46-97	12 JAN 98	SR



- ① TIN PER MIL-T-10727 OR TIN LEAD .0.00254 [.000100] MIN THK.
- ② GOLD PER MIL-G-45204, TYPE II, 0.00076 [.000030] MIN THK OVER NICKEL PER QQ-N-290 0.00028 [.000011] MIN THK ON CONTACT AREA.
- ③ GOLD FLASH PER MIL-G-45204, TYPE II, 0.13µm [.000005] MIN THK. OVER NICKEL PLATE PER QQ-N-290 0.51µm-1.52µm [.000020-.000060] EXT THK.
- 4. RECOMMENDED HOLE SIZE, PLATED OR UNPLATED:
 MACHINE INSERTION: 1.32±0.05 [.052±.002]
 HAND INSERTION: 1.32 ^{+0.10} _{-0.00} [.052 ^{+0.004} _{-.000}]
- 5. APPLICATION TOOL PART NUMBER:
 MACHINE NO. 682127-3
 INSERTION HEAD NO. 682039-2
- ⑥ TO INSURE PROPER SPRING TENSION DO NOT EXCEED A 0.05 [.002] DIFFERENCE IN PIN DIA WHEN CHANGING TO A SMALLER PIN.
- 7. BOTTOM PLUG KNOCKOUT TOOL PART NUMBER 69729 WITH TIP PART NUMBER 69728.



OPEN	KNOCKOUT	CLOSED	BOTTOM TYPE	RECOMMENDED PIN DIA	FINISH	PART NO
0.56-0.64 [.022-.025]	0.46-0.53 [.018-.021]	0.56-0.64 [.022-.025]	0.46-0.53 [.018-.021]	0.56-0.64 [.022-.025]	TIN ① GOLD ③	TIN ① GOLD ②
						TIN ① GOLD ②
0.56-0.64 [.022-.025]	0.46-0.53 [.018-.021]	0.56-0.64 [.022-.025]	0.46-0.53 [.018-.021]	0.56-0.64 [.022-.025]	TIN ① GOLD ③	TIN ① GOLD ②
						TIN ① GOLD ②
0.56-0.64 [.022-.025]	0.46-0.53 [.018-.021]	0.56-0.64 [.022-.025]	0.46-0.53 [.018-.021]	0.56-0.64 [.022-.025]	TIN ① GOLD ③	TIN ① GOLD ②
						TIN ① GOLD ②
EYELET				SPRING	PART NO	

DO NOT SCALE PRINT. UNLESS SPECIFIED DIMENSIONS IN mm [INCHES] TOLERANCES ON: 2 PLC DEC ± - 3 PLC DEC ± 0.20 [.008] ANGLES ± -		DR 4-5-91 R.TALLEY	AMP Incorporated Harrisburg, PA 17105-3608	
MATERIAL SPRING: BERYLLIUM COPPER QQ-C-533 EYELET: COPPER, QQ-C-576	FINISH SEE TABLE	CHK - APPD - APPD - PRODUCT SPEC - APPLICATION SPEC - WEIGHT -	NAME MINIATURE SPRING SOCKET ASSEMBLY SERIES 2	
		SIZE C	CAGE CODE 00779	DRAWING NO 331272
		SCALE 20:1	SHEET 1 OF 1	