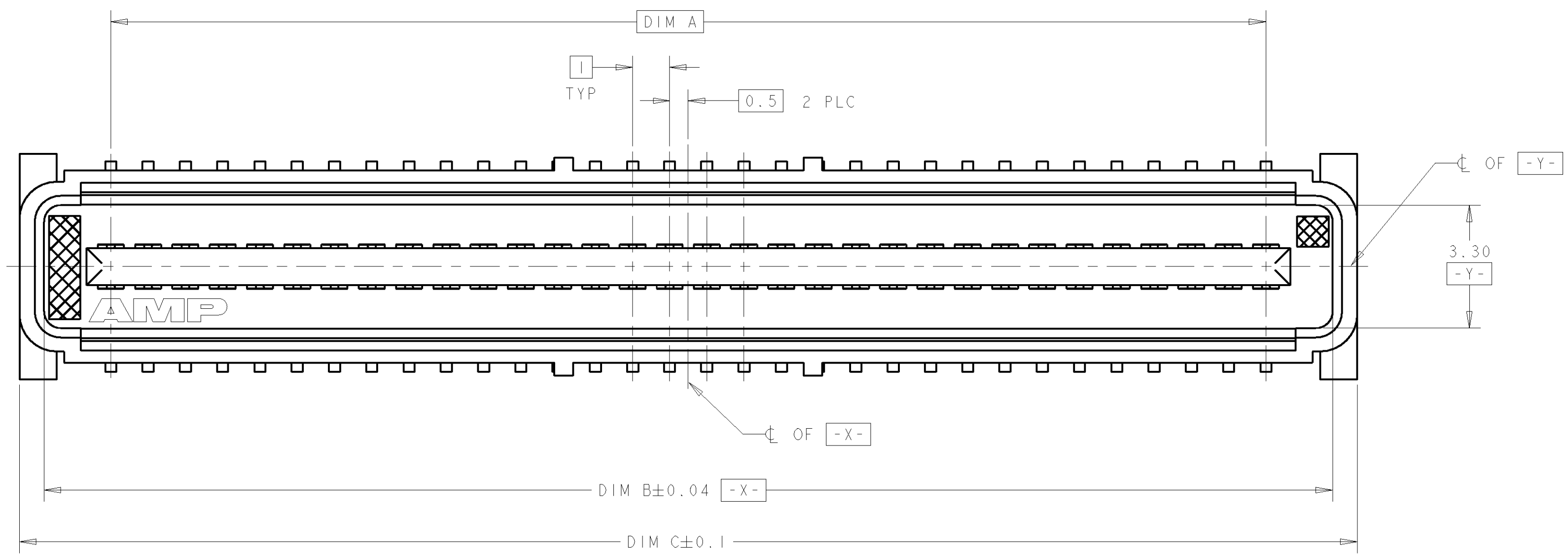
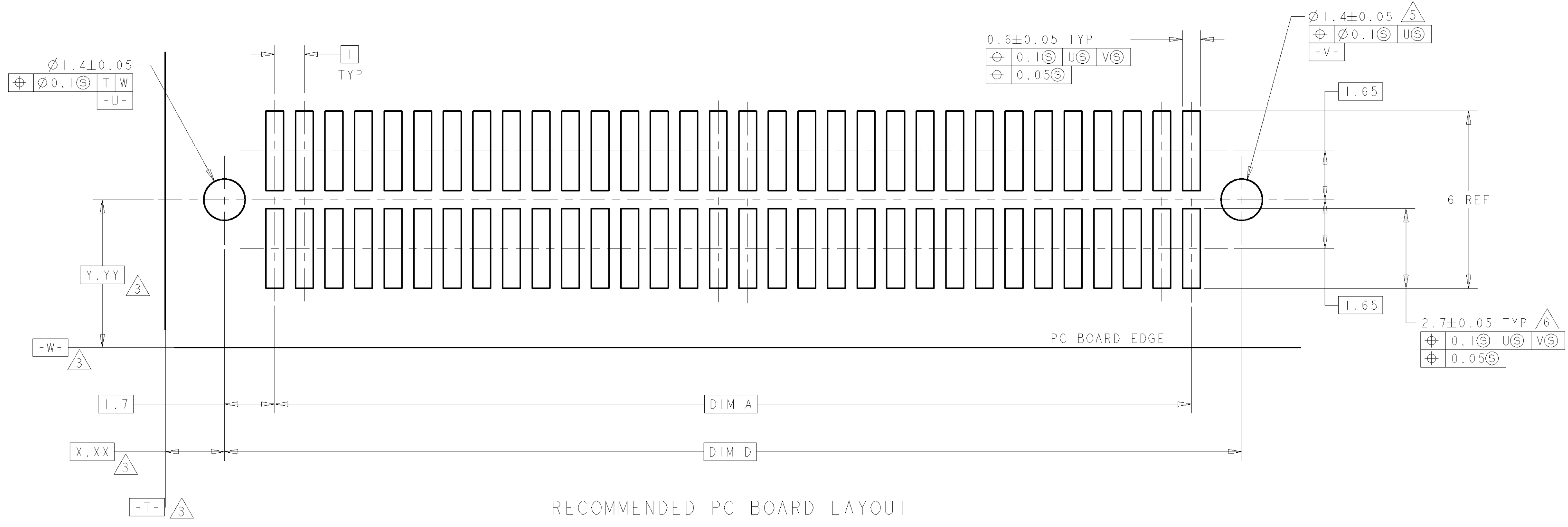
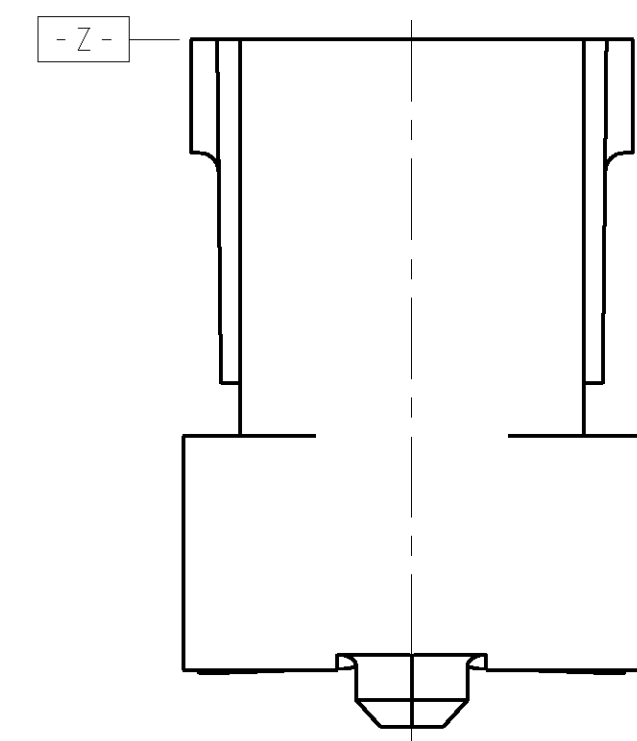
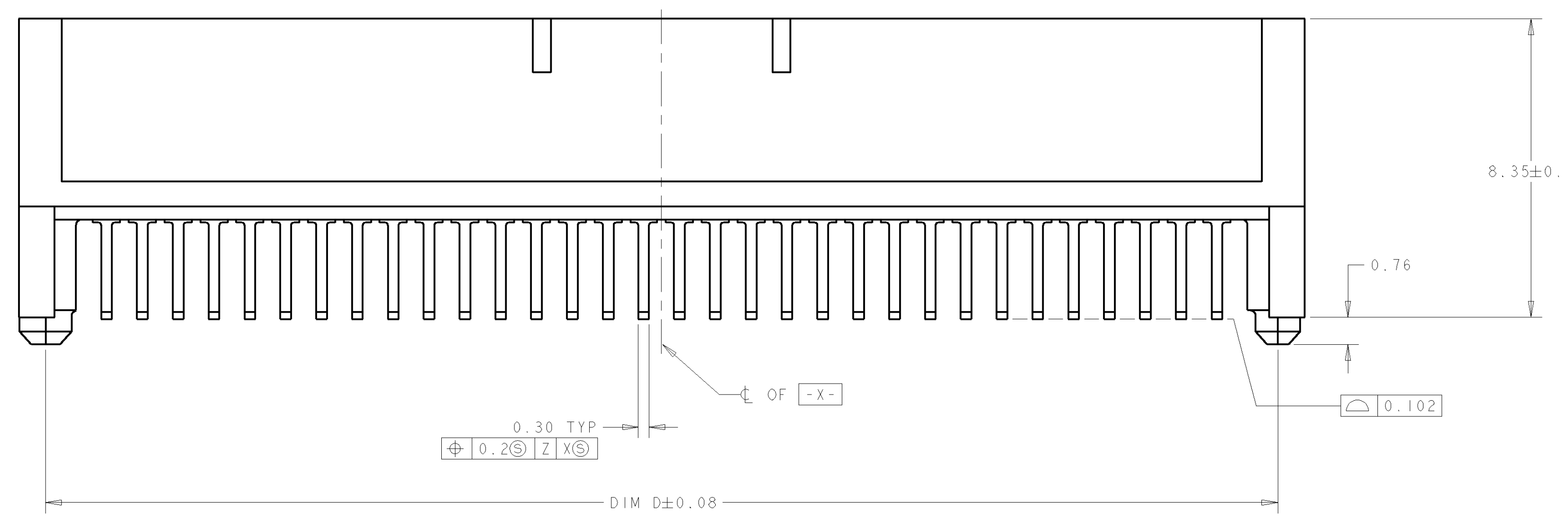


LOC	DIST	REV	DATE	BY	CHK	APPD
AD	39	C				



- 1 HOUSING MATERIAL: LIQUID CRYSTAL POLYMER. COLOR: BLACK. CONTACT MATERIAL: PHOSPHOR BRONZE.
- 2 CONTACT FINISH: 0.00381 MINIMUM MATTE TIN-LEAD (93-7) ON SOLDER AREA, 0.00076 MINIMUM GOLD ON MATING AREA, BOTH OVER 0.00127 MINIMUM NICKEL ON ENTIRE CONTACT.
- 3 DATUM LOCATIONS AND BASIC DIMENSIONS TO BE ESTABLISHED BY THE CUSTOMER. CONSULT AMP ENGINEERING WHEN PLACING MULTIPLE CONNECTORS ON A PC BOARD.
- 4 PACKAGED IN TAPE ON REELS PER EIA-841.
- 5 1.5±0.05 DIAMETER HOLE SHOULD BE USED IF PLACED ON PCB WITH VACUUM PLACEMENT EQUIPMENT.
- 6 SHORTER SOLDER LANDS MAY BE USED PER EIA 700AAAB, HOWEVER 2.7 LENGTH ASSURES OPTIMUM SOLDER FILLET.



RECOMMENDED PC BOARD LAYOUT

DIM D	DIM C	DIM B	DIM A	MATING CONNECTOR	STACK HGTS	POS	PART NO
44.4	45.9	44.58	41	120524-2	15	84	120527-2
44.4	45.9	44.58	41	120523-2	13	84	120527-2
44.4	45.9	44.58	41	120603-2	12	84	120527-2
44.4	45.9	44.58	41	120521-2	10	84	120527-2
34.4	35.9	34.58	31	120524-1	15	64	120527-1
34.4	35.9	34.58	31	120523-1	13	64	120527-1
34.4	35.9	34.58	31	120603-1	12	64	120527-1
34.4	35.9	34.58	31	120521-1	10	64	120527-1

<small>THIS DRAWING IS A CONTROLLED DOCUMENT FOR AMP INCORPORATED. ALL CHANGES TO THIS DRAWING ARE THE PROPERTY OF AMP INCORPORATED. ORGANIZATION SHOULD BE CONTACTED FOR THE LATEST REVISION.</small>		DWN: J. REED 2/11/97 ENR: L. VO 2/11/97 APPD: -	<b>AMP</b> AMP Incorporated Harrisburg, PA 17105-3608
DIMENSIONS: mm TOLERANCES UNLESS OTHERWISE SPECIFIED: 0 PLC ± 1 PLC ±0.03 2 PLC ±0.03 3 PLC ±0.03 4 PLC ± UNLESS OTHERWISE SPECIFIED: ±0.10	PRODUCT SPEC: - APPLICATION SPEC: - WEIGHT: - MATERIAL: - FINISH: -	NAME: - SIZE: A1 CAGE CODE: 00779 DRAWING NO: C-120527	CUSTOMER DRAWING SCALE: 10:1 SHEET: 1 OF 1 REV: C