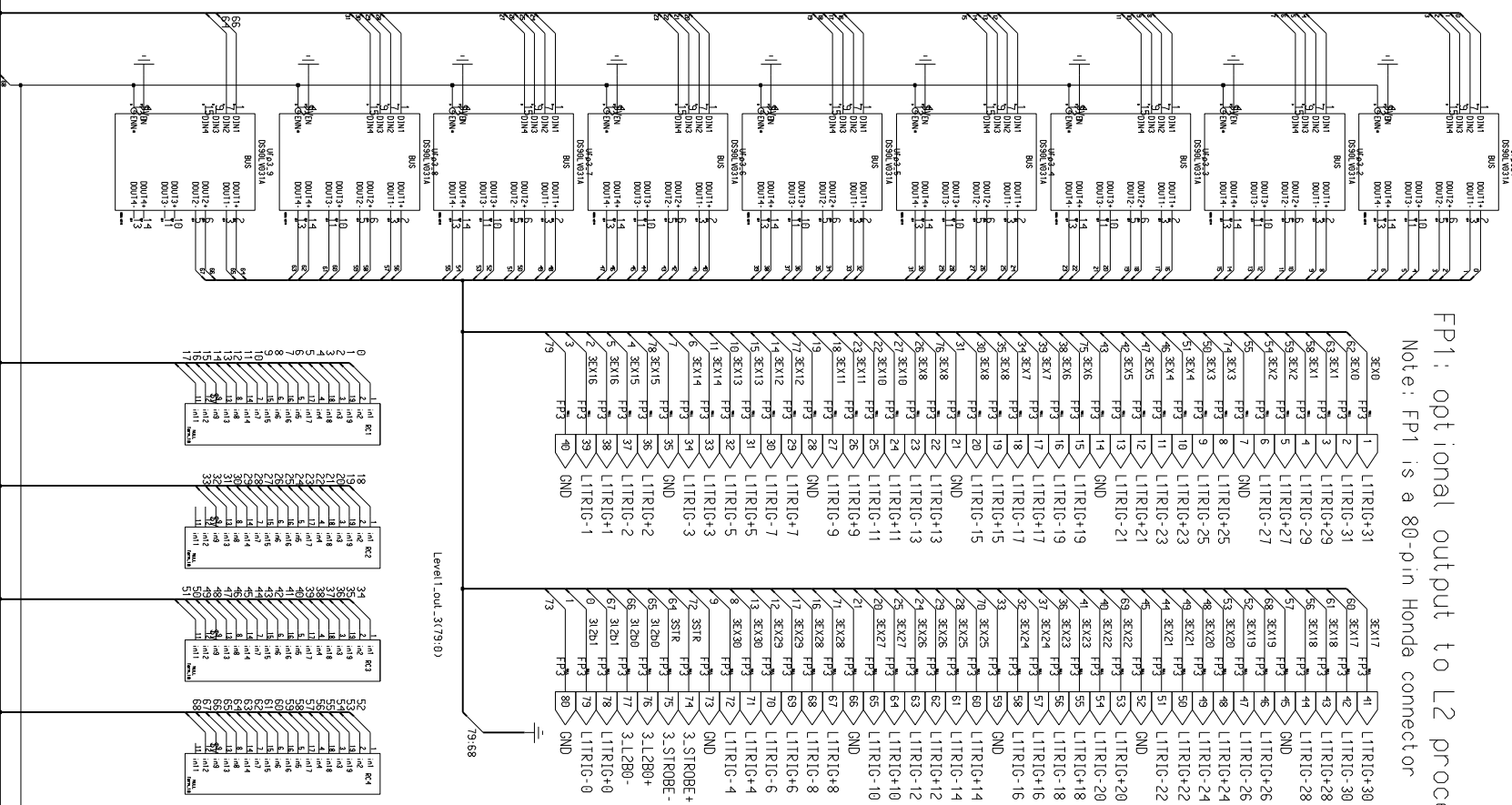


The L1 input signal map is based on Fred inputs on the interface board side. Note that the L1 output connector pin map is based on Fred signals on the Fred side. Need to remap the signals in firmware for Prefred signals.

the 64 L1 trigger bits are sent into FPGA as L1\_INK(63:0), while L1Buffer bits (1:0) are L1\_INK(65:64), and strobe 2 and 1 are L1\_INK(67:66), and L1\_INK(68) is the enable bit.

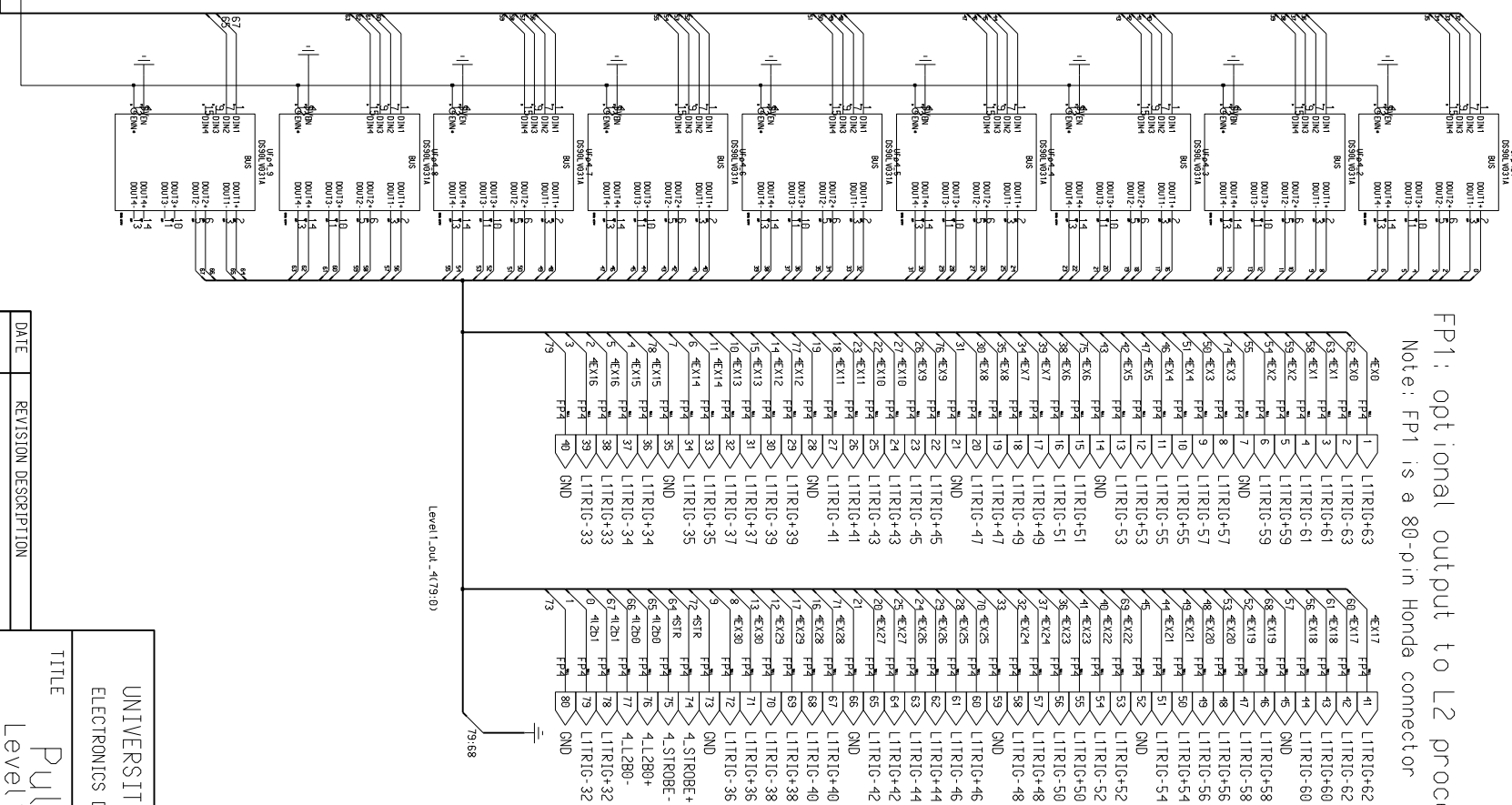
FP1: optional output to L2 processors

Note: FP1 is a 80-pin Honda connector



FP1: optional output to L2 processors

Note: FP1 is a 80-pin Honda connector



L1\_Ink(68:0)

L1\_Ink(67:0)

UNIVERSITY OF CHICAGO ELECTRONICS DEVELOPMENT GROUP		TITLE Pulsar Level1 Out	
DATE 2001-04-23	REVISION DESCRIPTION PostBuster customization from Prefred	SHEET 16 OF 25	C - 2501
DRN	Changed Pin Mapping to FRED(HB/L)	DATE 2001-04-23	REV A