

Board Dimensions and Board Origin

# ATLAS SCT S-LINK INTERFACE

THE UNIVERSITY OF CHICAGO  
 Enrico Fermi Institute

JULY 2003

Mounting Table

	R16	R17	R18	KH1
LSC	-	200	200	OPEN
LDC	0	-	-	FILL

KH1

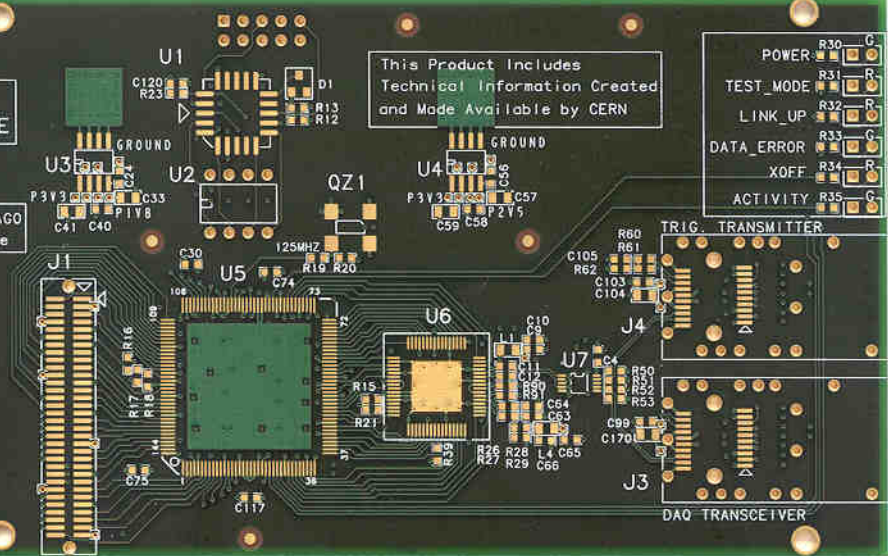
3.3V SUPPLY ONLY

This Product Includes  
 Technical Information Created  
 and Made Available by CERN

POWER R30 G  
 TEST\_MODE R31 R  
 LINK\_UP R32 R  
 DATA\_ERROR R33 G  
 XOFF R34 R  
 ACTIVITY R35 G

TRIG. TRANSMITTER

DAQ TRANSCIEVER



- □ POWER
- □ TEST\_MODE
- □ LINK\_UP
- □ DATA\_ERROR
- □ XOFF
- □ ACTIVITY

This Product Includes  
 Technical Information Created  
 and Made Available by CERN

ATLAS SCT  
 S-LINK INTERFACE

THE UNIVERSITY OF CHICAGO  
 Enrico Fermi Institute

JULY 2003

Mounting Table				
	R16	R17	R18	KH1
LSC	-	200	200	OPEN
LDC	0	-	-	FILL

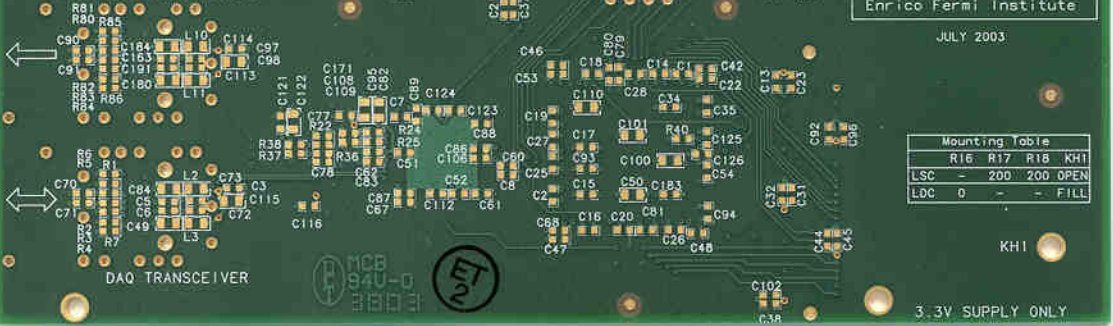
KH1

3.3V SUPPLY ONLY

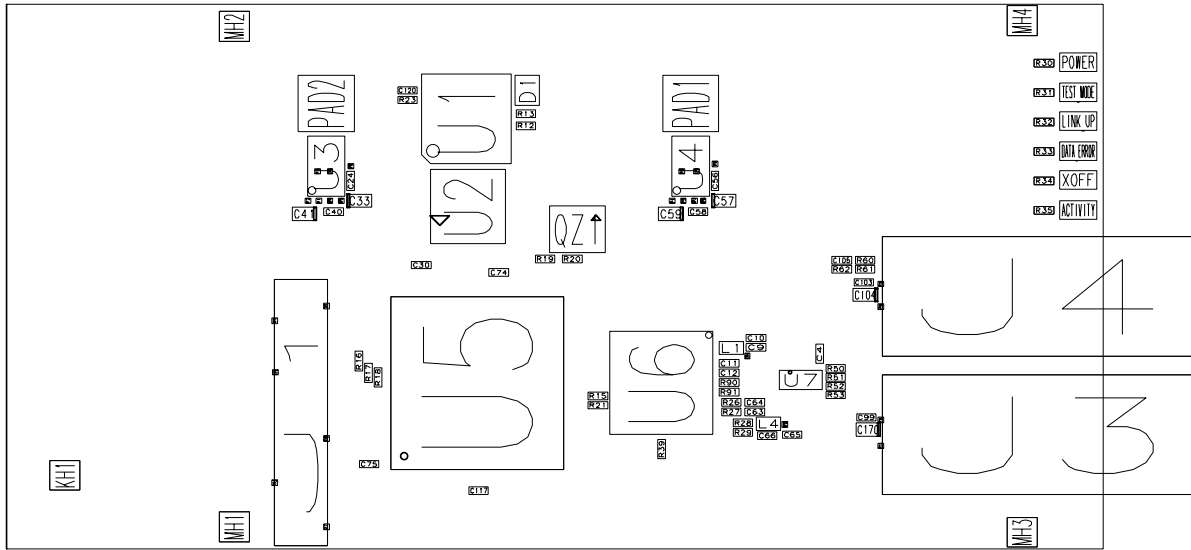
TRIG. TRANSMITTER

DAQ TRANSMITTER

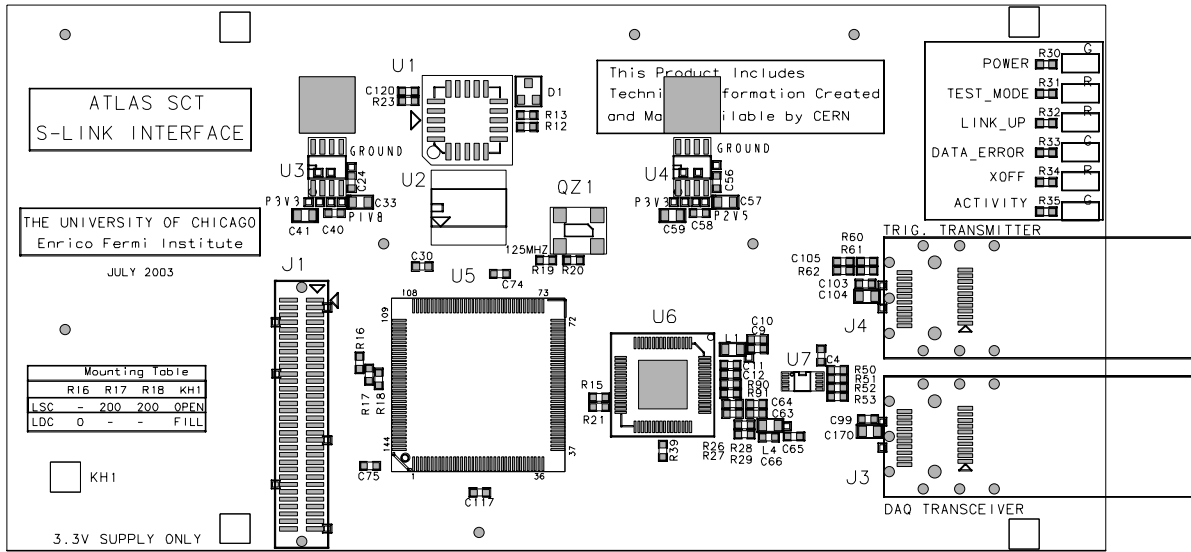
MCB  
 94U-0  
 3103



# Top Side Component Reference #

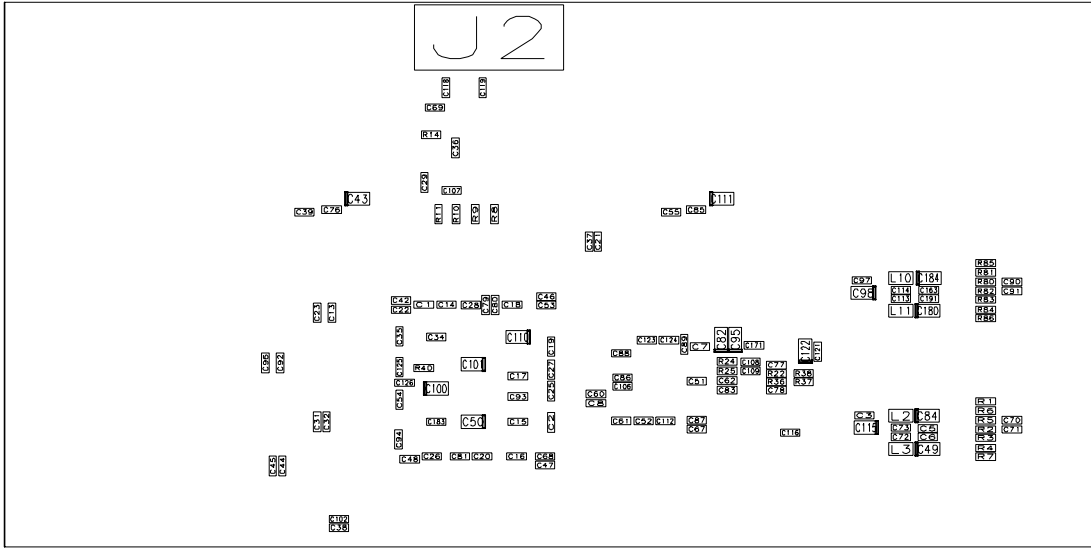


# Top Side Component Placement Drawing



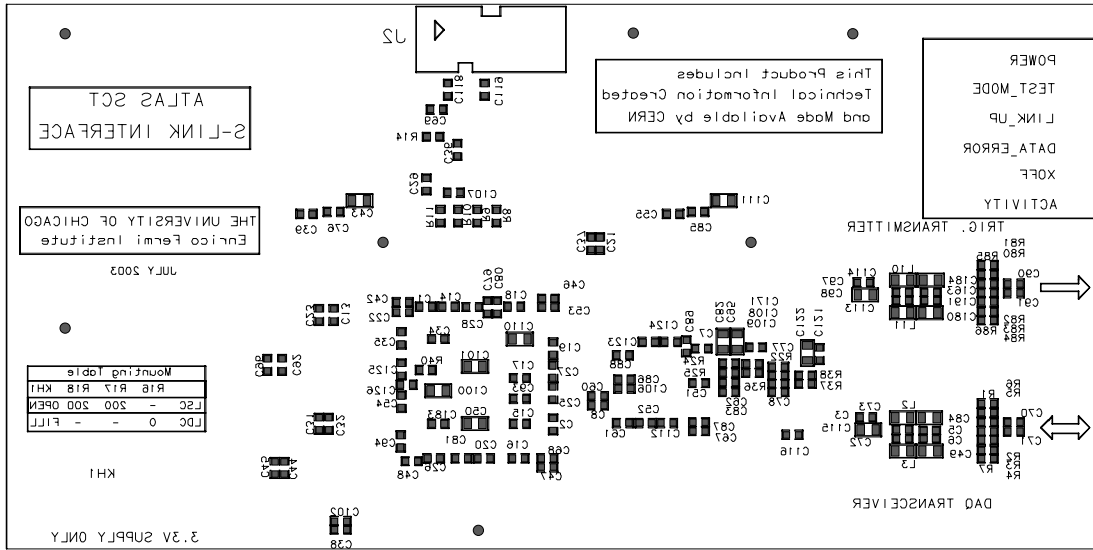
# Top Side Component Placement Drawing

# Bottom Side Component Reference #



# Top Side Component Placement Drawing

# Bottom Side Component Placement Drawing



ARTWORK\_B: BOTTOM 21K2GREEN

# Top Side Component Placement Drawing