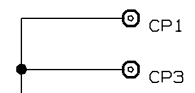


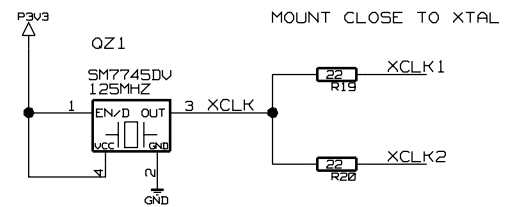
STANDOFF PILLAR MOUNTING
HOLES GROUNDED
CMC-KEYING-PIN



ISOLATED KEYING HOLE
FILL FOR LDC

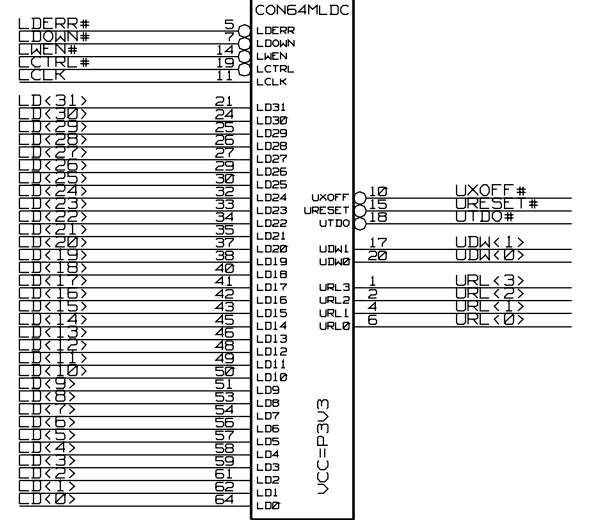
MOUNTING TABLE

R16	R17	R18	CP2
LSC	-	200	200
LDC	0	-	FILL



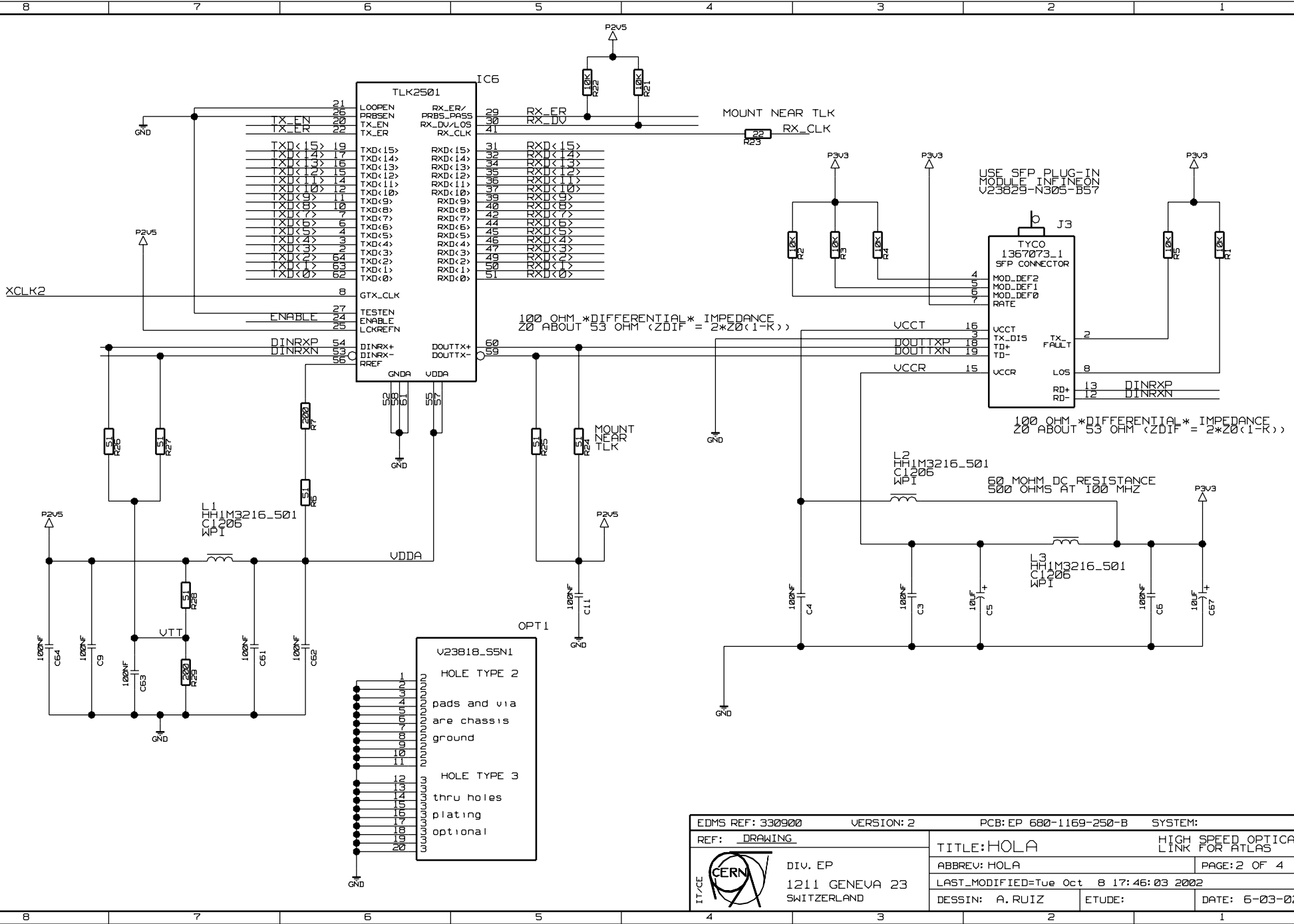
ONLY MOUNT WHEN CONFIGURED AS LSC
MOUNT NEAR ALTERA

MOUNT ONLY WHEN CONFIGURED AS LDC
MOUNT NEAR



NOTES: ALL RESISTORS 0603 PACKAGE
470 PF AND 100 NF CAPACTORS 0603 PACKAGE
100 UF CAPACTORS 1206 PACKAGE
TWO 100 NF IN PARALLEL FOR EACH OF PIN 83,85, 100 OF ALTERA

EDMS REF: 330900		VERSION: 2		PCB: EP 680-1169-250-B		SYSTEM:	
REF: DRAWING				TITLE: HOLA		HIGH-SPEED OPTICAL LINK FOR ATLAS	
Div. EP 1211 GENEVA 23 SWITZERLAND				ABBREV: HOLA		PAGE: 1 OF 4	
				LAST_MODIFIED=Tue Oct 8 17:45:59 2002			
DESIGN: A. RUIZ		ETUDE:		DATE: 6-03-02			



OPT1


V23818_55N1

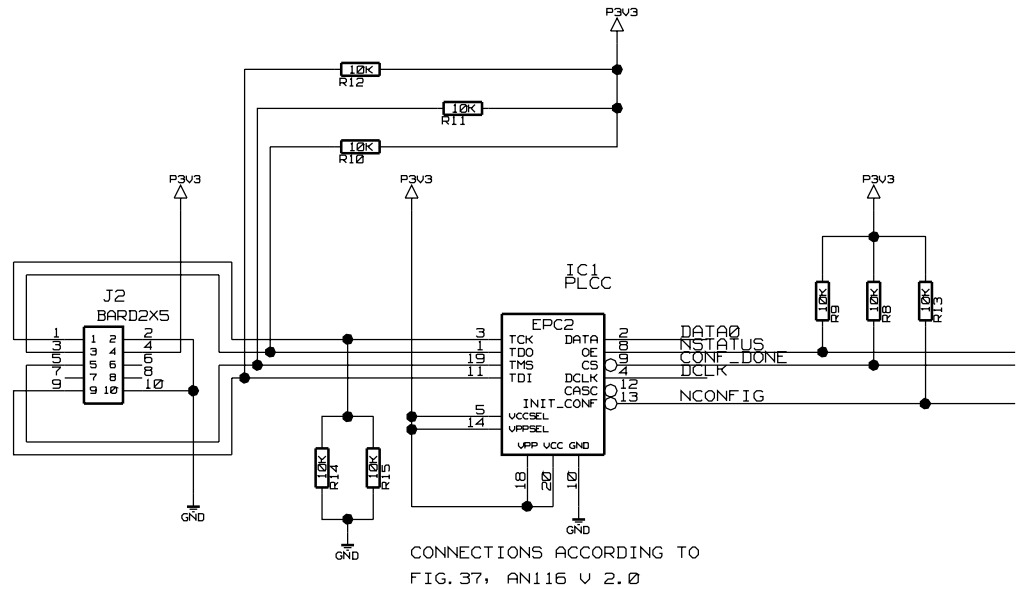
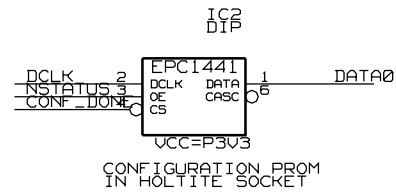
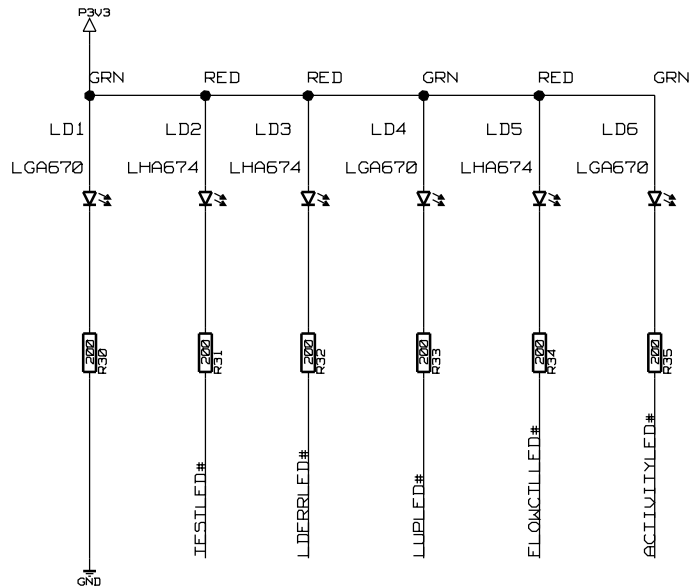
HOLE TYPE 2

pads and via
are chassis
ground


HOLE TYPE 3

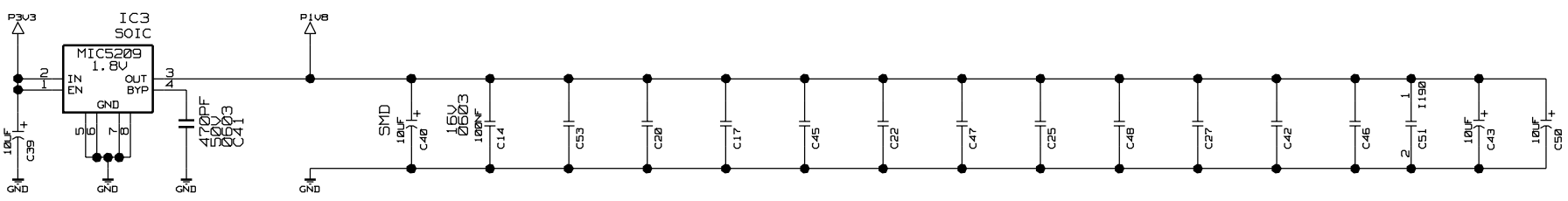
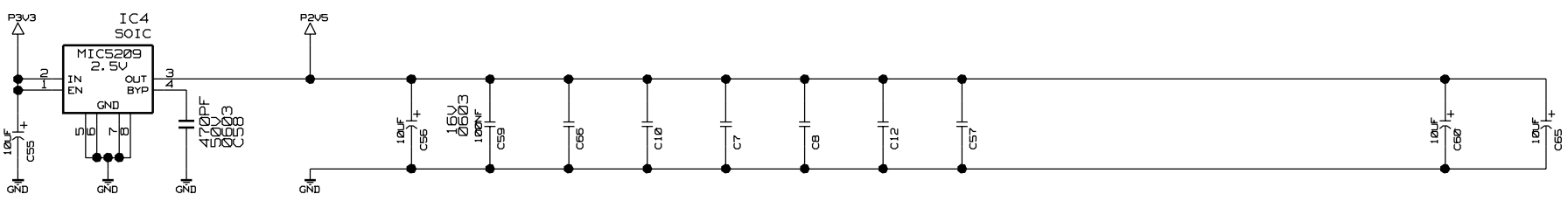
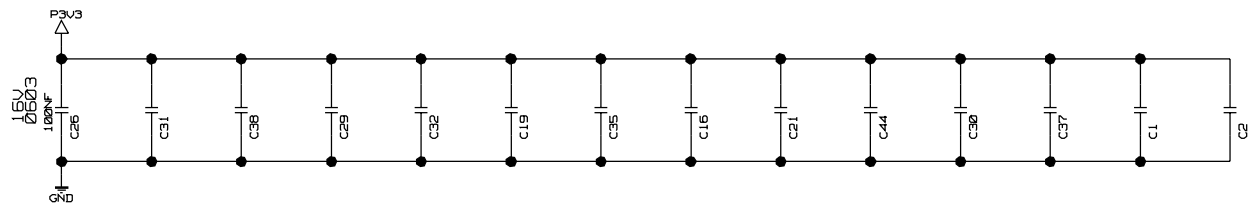
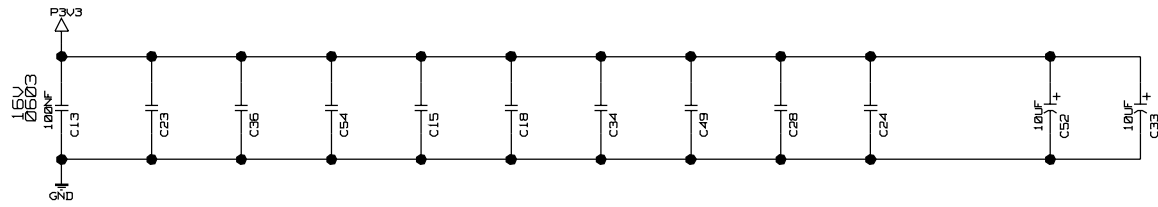
thru holes
plating
optional


EDMS REF: 330900		VERSION: 2		PCB: EP 680-1169-250-B		SYSTEM:	
REF: DRAWING		TITLE: HOLA				HIGH SPEED OPTICAL LINK FOR ATLAS	
 Div. EP 1211 GENEVA 23 SWITZERLAND		ABBREV: HOLA		PAGE: 2 OF 4			
		LAST_MODIFIED=Tue Oct 8 17:46:03 2002					
IT/CE		DESSIN: A. RUIZ		ETUDE:		DATE: 6-03-02	



NOTES: 10-PIN CONNECTOR HOLTITE SOCKET
MOUNT EITHER EPC1441 OR EPC2

EDMS REF: 330900		VERSION: 2		PCB: EP 680-1169-250-B		SYSTEM:	
REF: DRAWING				TITLE: HOLA		HIGH-SPEED OPTICAL LINK FOR ATLAS	
 Div. EP 1211 GENEVA 23 SWITZERLAND				ABBREV: HOLA		PAGE: 3 OF 4	
				LAST_MODIFIED= Tue Oct 8 17:46:05 2002			
IT/CE		DESSIN: A. RUIZ		ETUDE:		DATE: 6-03-02	



EDMS REF: 330900	VERSION: 2	PCB: EP 680-1169-250-B	SYSTEM:
REF: <u>DRAWING</u>	TITLE: HOLA		HIGH-SPEED OPTICAL LINK FOR ATLAS
 DIV. EP 1211 GENEVA 23 SWITZERLAND	ABBREV: HOLA	PAGE: 4 OF 4	
	LAST_MODIFIED= Tue Oct 8 17:46:10 2002		
DESSIN: A. RUIZ	ETUDE:	DATE: 6-03-02	